

Lambert Road, Brixton, SW2

1 bedroom flat for sale

£475,000

Share of Freehold

Property Details

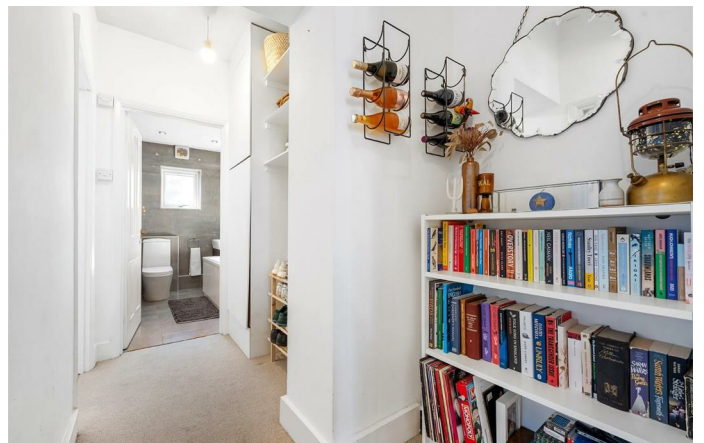
A charming one bedroom apartment with a private South-facing garden, set within a handsome double-fronted, end-of-terrace Victorian property. Brimming with period character, generous proportions and contemporary touches, this appealing home combines comfort, style, and excellent storage. The property makes a striking first impression with its grand façade and inviting blue front door. To the front sits a spacious reception room with a large bay window dressed with plantation shutters, ornate coricing, and original wooden floors. With ample space for dining and relaxing, it is perfect for entertaining or unwinding. A few steps lead to the separate kitchen, neatly arranged with gloss white cabinetry, black worktops and leafy views. Peacefully positioned at the rear, the bedroom enjoys fitted wardrobes, dual-aspect windows and French doors to the garden, creating a light-filled retreat. The South-facing garden is a real highlight: a sunny haven with patio, lawn, planting beds and raised deck, plus secure side access. A sleek bathroom, spacious hallway and large cellar complete this fantastic home.

Council tax band C

EPC rating D (58)

Features

- One double bedroom
- South-facing private garden
- Double-fronted, end-of-terrace Victorian conversion
- Characterful features
- Planning permission previously approved to extend
- Access to a large cellar for storage
- Desirable pocket close to Brixton, Clapham and Brockwell Park
- Victoria and Northern Lines within walking distance
- Share of freehold. Chain-free

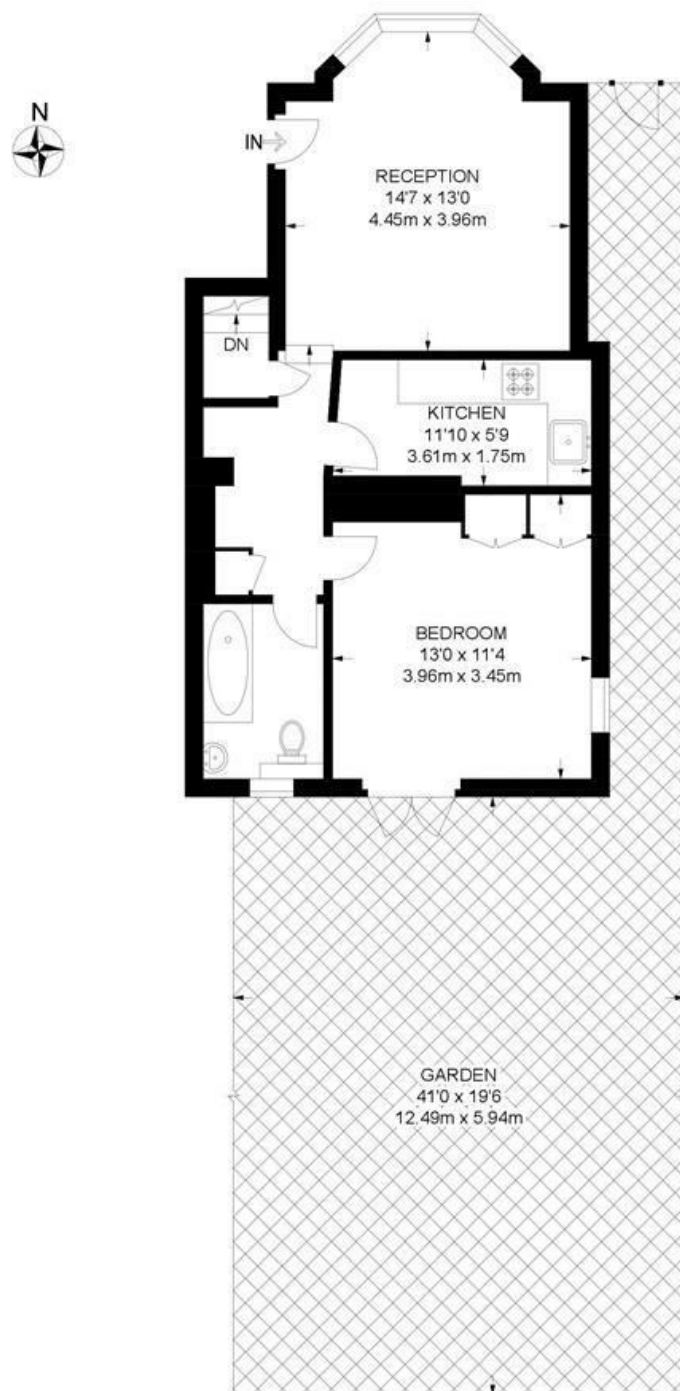


Lambert Road, Brixton, SW2

Lambert Road, SW2

1 Bedroom Flat

APPROXIMATE GROSS INTERNAL AREA: **528 SQ FT / 49 SQ M**



GROUND FLOOR



While we try our very best, floor plans are produced as a guide only and we take no responsibility for the precise accuracy with which any property is represented.

Lambert Road, Brixton, SW2

