



Rushcroft Road, Brixton, SW2

3 bedroom flat to let

£700 Per Week

Furnished

Property Details

Keating Estates are proud to present this stunning and spacious three-bedroom flat, ideally located just a four-minute walk from Brixton Station on Rushcroft Road.

This beautifully presented property comprises three well-proportioned bedrooms, a sleek open-plan kitchen and living area, and a contemporary family-sized bathroom.

Situated in the heart of Brixton, the flat is just a five-minute stroll from the vibrant Brixton Market and High Street, offering a wide array of shops, bars, and restaurants. For a change of pace, the green open spaces of Brockwell Park are only a twelve-minute walk away, perfect for scenic walks and outdoor relaxation.

Council tax band D **EPC rating B (81)**

Features

- Three Bedrooms
- Modern
- Spacious throughout
- Prime location
- Stones throw from central Brixton
- Furnished



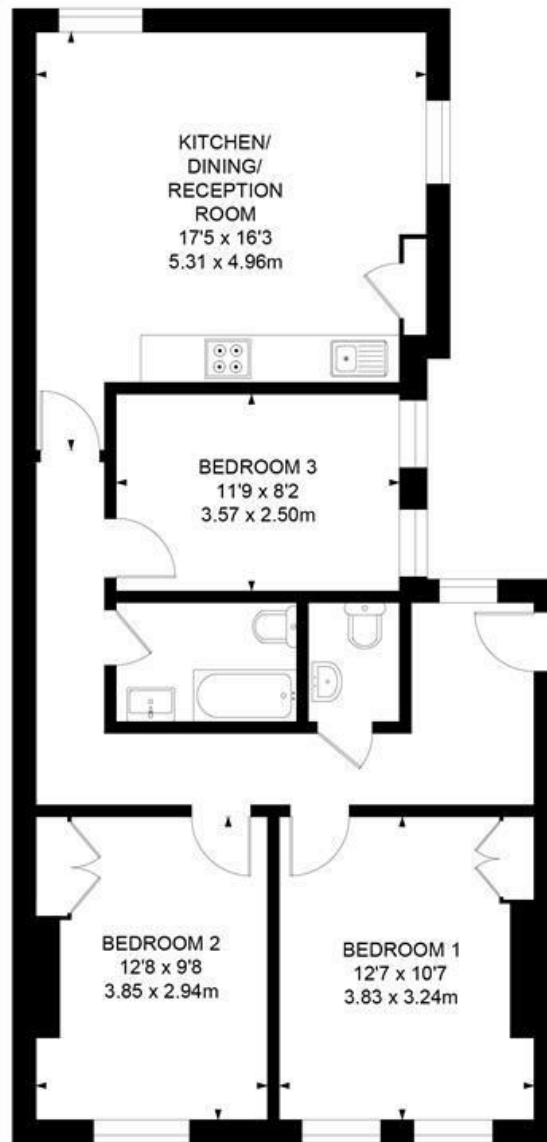
Rushcroft Road, Brixton, SW2

Clarence House, SW2

3 Bedroom Flat

APPROXIMATE GROSS INTERNAL AREA :

822 SQ FT / 76.38 SQ M



SECOND FLOOR



While we try our very best, floor plans are produced as a guide only and we take no responsibility for the precise accuracy with which any property is represented.

Rushcroft Road, Brixton, SW2

