

## Renton Close, Brixton Hill, SW2

2 bedroom flat - purpose built for sale

£435,000

Leasehold

### Property Details

A delightful two double bedroom apartment, set on the fourth floor of an attractive purpose-built property surrounded by leafy communal gardens and playpark. This bright and spacious home combines contemporary style with a central yet quiet location. The spacious reception room is flooded with natural light from two South-facing windows, creating a warm and inviting setting for relaxing or entertaining. Wooden floorboards, fitted storage, and a charming window seat add both character and practicality. The separate modern kitchen features sleek white cabinetry, wood-effect worktops, and a large window. With cabinetry running down both sides this is an extremely practical place to cook. Both double bedrooms are tastefully presented in calming neutral tones, while the bright bathroom, with its classic white tiling and bathtub with overhead shower, enjoys abundant natural light. Further benefits include video entry, additional storage cupboard outside the flat, and access to beautifully maintained communal gardens with picnic seating and a play area — a lovely retreat moments from local amenities such as shops and eateries, with multiple parks a short walk away also.

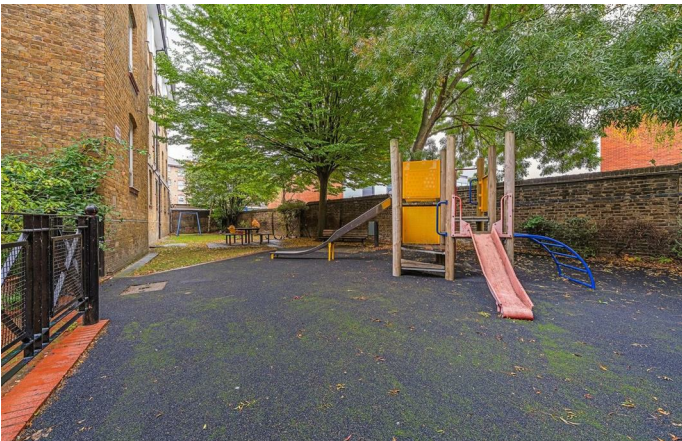
Council tax band B

EPC rating D (57)

### Features

- Two bedrooms
- Attractive purpose built property
- Bright fourth floor setting
- Over 725 square feet
- Additional storage cupboard outside the flat
- Communal grounds including a play park
- Local amenities on the doorstep
- Central Brixton a fifteen-minute stroll or five-minute bus ride
- Access to the Victoria Line and Overground
- Chain-free

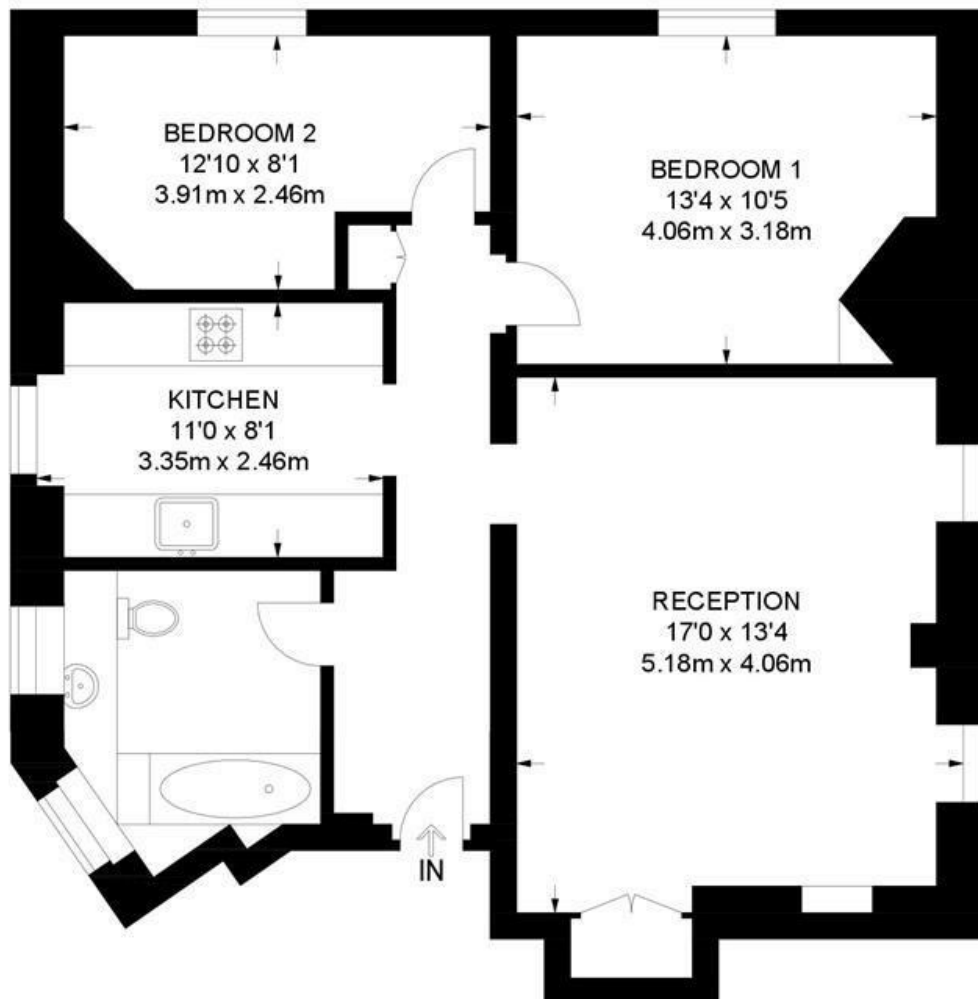




Renton Close, Brixton Hill, SW2

**Brixton Hill, SW2**  
**2 Bedroom Flat**

APPROXIMATE GROSS INTERNAL AREA: **732 SQ FT / 68 SQ M**



**FOURTH FLOOR**



While we try our very best, floor plans are produced as a guide only and we take no responsibility for the precise accuracy with which any property is represented.



Renton Close, Brixton Hill, SW2

