



Hemberton Road, Clapham, SW9

2 bedroom flat - conversion for sale

£575,000

Share of Freehold

Property Details

This stunning two double bedroom flat occupies the ground floor of a handsome Victorian terraced house and features a private south-west facing garden. Inside, newly fitted herringbone flooring flows throughout, adding warmth and sophistication. The front reception room forms the heart of the home, with high corniced ceilings, an ornate ceiling rose, a striking original fireplace, and bespoke built-in shelving, while a bay window with timber double-glazed sash windows and café-style shutters combines period charm with modern comfort. The separate kitchen features dark blue cabinetry, a white herringbone tile splashback, integrated appliances, and a wine cooler, with a sash window above the sink providing light and ventilation. The principal bedroom is a peaceful retreat with French doors opening onto the garden, and the second double bedroom, currently used as a reception room, also enjoys garden access via French doors. A lower-ground utility room and a neutral bathroom complete the home, while the sunny garden offers privacy, a paved patio, and raised flower beds, perfect for relaxation or entertaining.

Council tax band D

EPC rating D (57)

Features

- Two double bedrooms
- Private South- West facing garden
- Victorian conversion
- Split- level
- Demised basement
- Characterful features
- Desirable residential road
- Walking distance to Clapham, Brixton and Stockwell
- Victoria and Northern Lines
- Share of freehold

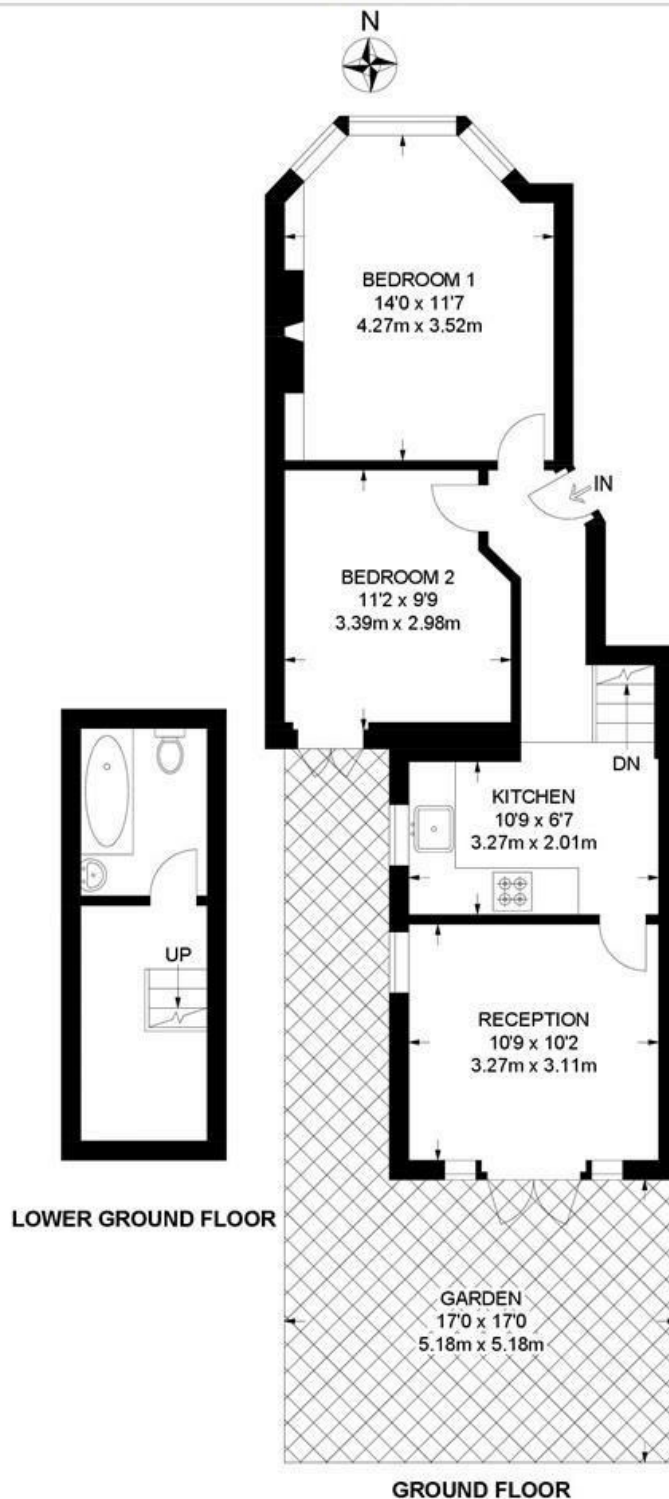




Hemberton Road, Clapham, SW9

Hemberton Road, SW9
2 Bedroom Flat

APPROXIMATE GROSS INTERNAL AREA: 615 SQ FT / 57 SQ M



While we try our very best, floor plans are produced as a guide only and we take no responsibility for the precise accuracy with which any property is represented.

Hemberton Road, Clapham, SW9

