



Lambert Road, Brixton, SW2

1 bedroom flat to let

£438 Per Week

Part furnished

Property Details

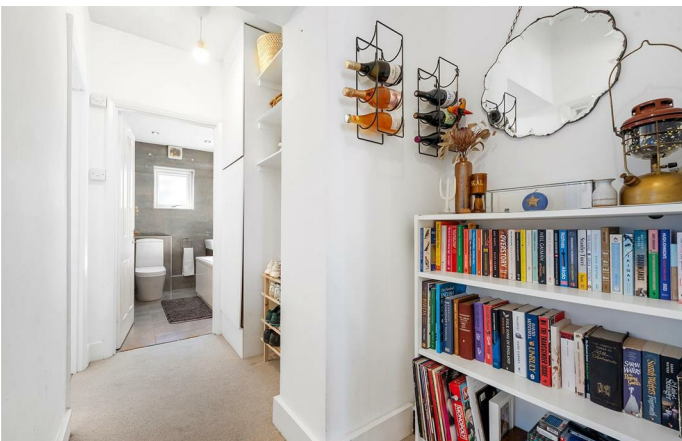
Keating Estates are delighted to present this charming one-bedroom garden flat, situated within a double-fronted Victorian house on a highly sought-after street. Positioned on the ground floor, the property offers a spacious reception room, a separate galley kitchen, a sleek modern bathroom, and a generous double bedroom.

The south-facing garden is a standout feature, providing an ideal space to enjoy the warmer summer months. Perfectly located close to central Brixton, residents benefit from excellent transport links as well as an impressive selection of bars, restaurants, and the vibrant Brixton Village, all just moments away.

Features

- One double bedroom
- Family bathroom
- Separate reception and kitchen
- Large private garden
- Cellar
- Secure side access
- Highly desirable road

Council tax band C EPC rating D (58)



Lambert Road, Brixton, SW2



1 bed Flat.

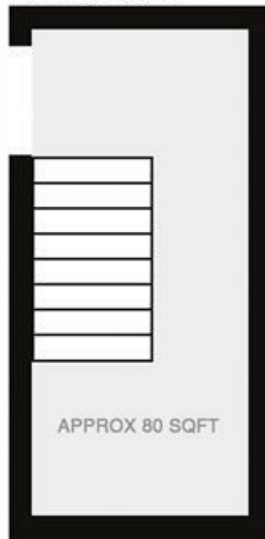
Approx internal area:

590 sqft 55 sqm

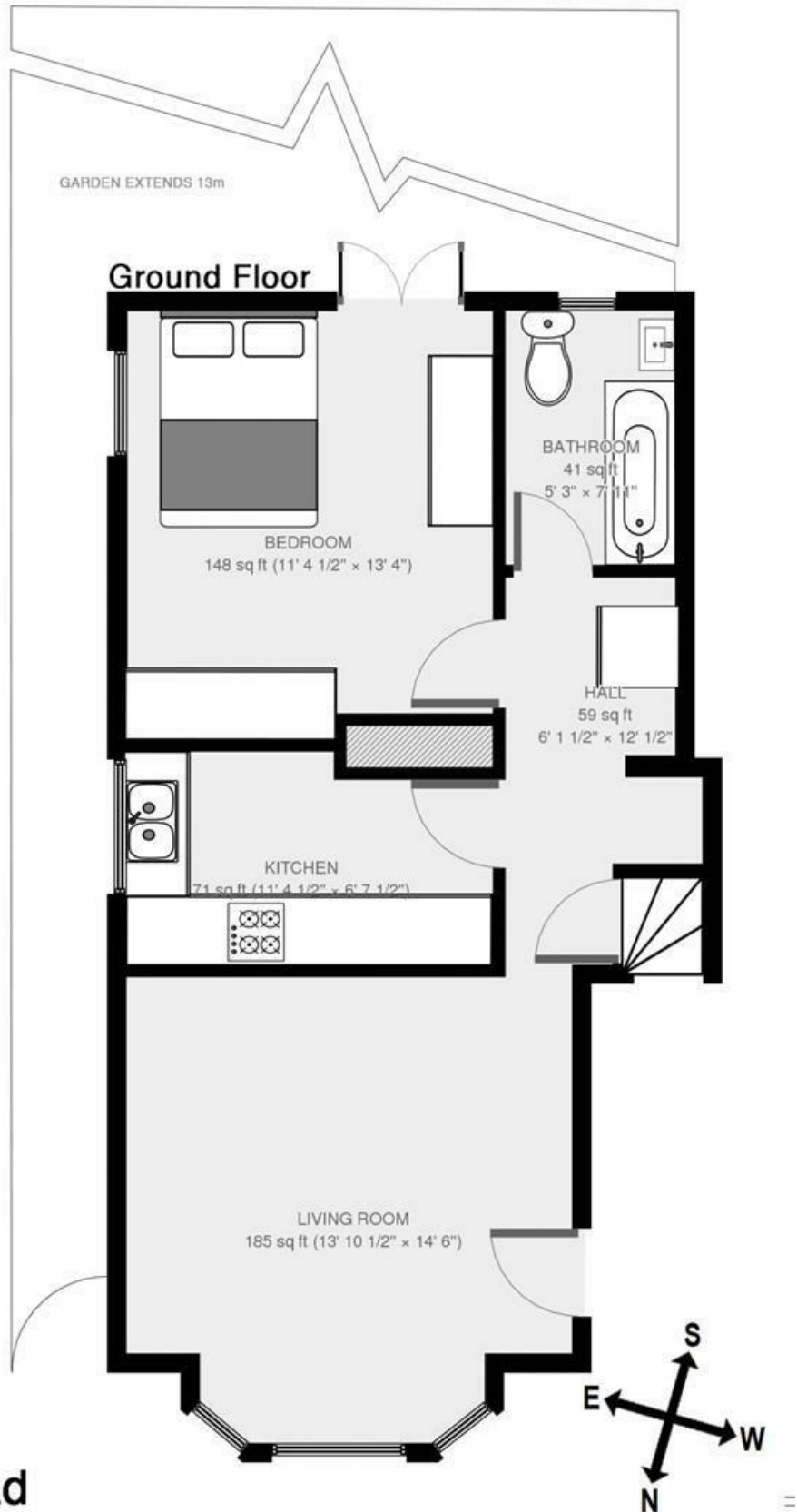
0' 2' 4' 6' 8' 10'

While we do try our very best, floor plans are produced as a guide only and we take no responsibility for the precise accuracy with which any property is represented

Basement



Lambert Road



Lambert Road, Brixton, SW2

