

Milles Square, Brixton, SW9

2 bedroom flat - purpose built for sale

Leasehold

Property Details

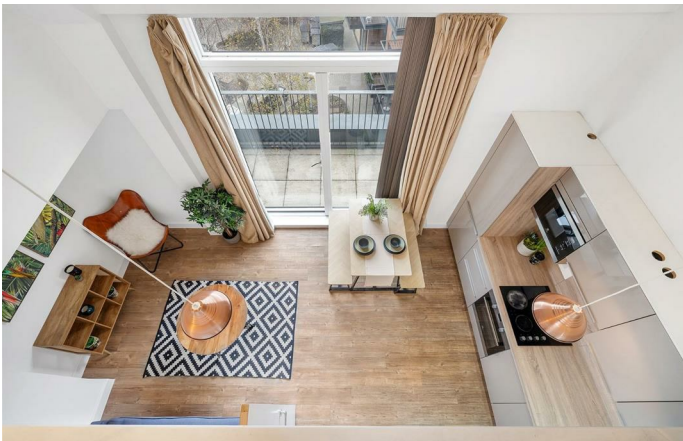
A stunning two bedroom, two bathroom duplex apartment with a full-width private terrace in a modern development. The open-plan reception is flooded with natural light from floor-to-ceiling windows and features double-height ceilings, sleek flooring, and a contemporary kitchen with integrated appliances and gloss cabinetry. Glass doors open onto a terrace ideal for dining, relaxing, or growing plants. The second double bedroom also has terrace access, fitted wardrobes, and an adjacent bathroom with bath, overhead shower, neutral tiling, and storage. A mezzanine level above the reception hosts the principal bedroom suite, offering a skylight, glass balustrade overlooking the living space, and a second bathroom with walk-in shower. The mezzanine landing includes a utility cupboard and a work-from-home alcove. Additional features include underfloor heating, lift access, seven-day concierge, bike storage, and shared outdoor spaces.

Features

- Two double bedrooms
- Two bathrooms
- Private terrace spanning width of the apartment
- Secure modern duplex
- Split over the fourth and fifth floors
- Well-maintained communal grounds
- Concierge, lift and bike storage
- Central Brixton moments from Brixton Village
- Short walk to Brixton tube station
- Chain-free

Council tax band E

EPC rating C (77)

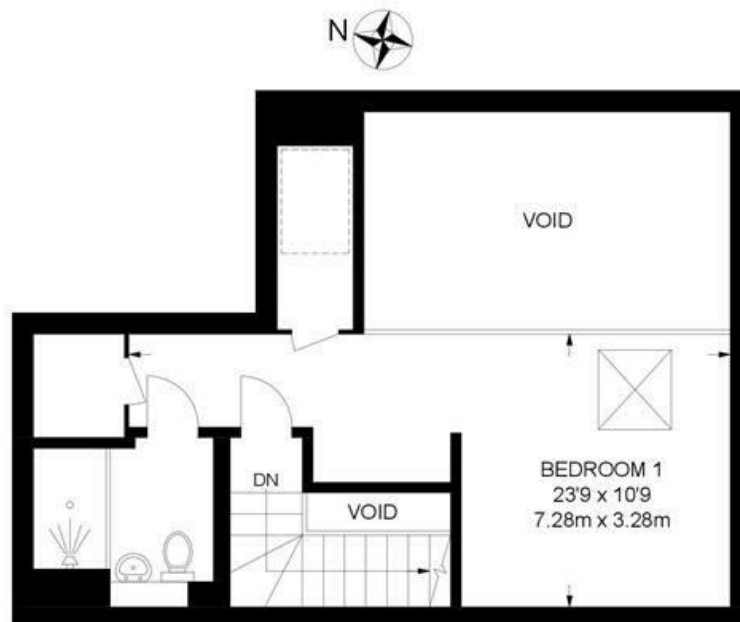




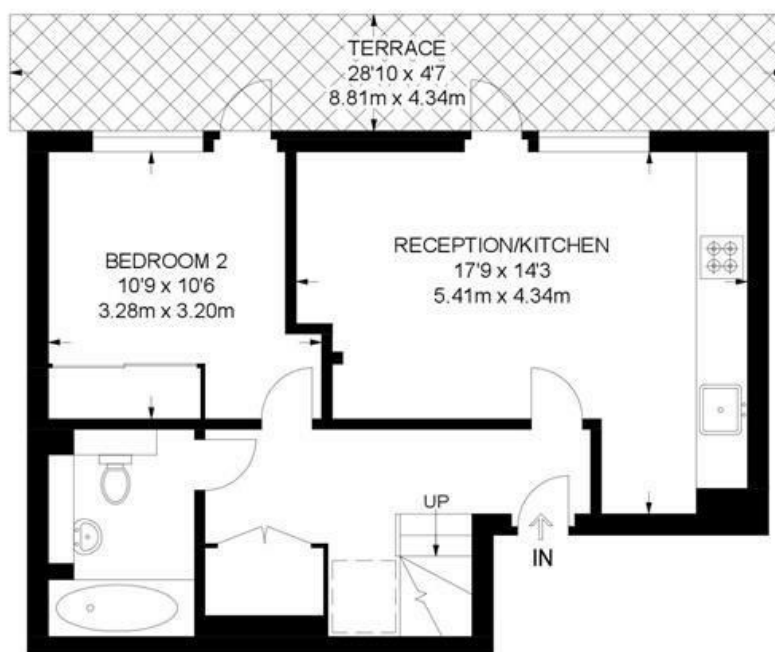
Milles Square, Brixton, SW9

Milles Square, SW9
2 Bedroom Flat

APPROXIMATE GROSS INTERNAL AREA: **784 SQ FT / 72.8 SQ M**



FIFTH FLOOR



FOURTH FLOOR



While we try our very best, floor plans are produced as a guide only and we take no responsibility for the precise accuracy with which any property is represented.

Milles Square, Brixton, SW9

