

**Morrish Road, Brixton, SW2**

**£450,000**

2 bedroom flat for sale

## Property Details

A fantastic, two double bedroom, two bathroom flat, on the first floor of a contemporary development on Morrish Road. The reception room is open plan with doors that allow the living space to flow seamlessly out onto the large, private balcony, which spans the width of the entire property – the perfect outdoor space in which to relax during the warmer months. The open plan area is a great size, with ample space to both relax and dine. Both the bedrooms are spacious and similar in size, each benefiting from some convenient built-in storage. The master bedroom further benefits from a modern en-suite shower room, which matches the family bathroom in a sleek and contemporary style. This bright and airy apartment is ideal for anyone looking to rent out a bedroom or share with friends thanks to the two well-proportioned bedrooms and the additional bathroom. The property also benefits from underground parking and some handy bike storage within this secure, modern build development. As far as locations go, it's fantastic. Morrish Road is a quiet and sleepy residential street, popular for its proximity to Brixton (16-19 mins), Streatham Hill (10-12 mins) and Clapham (16-18 mins).

Council tax band D    EPC rating C (80)

## Features

- Two double bedrooms
- Two bathrooms
- Secure modern development
- Over 800 square feet of internal living space
- Private balcony spanning the width of the property
- Allocated off-street parking space



Morrish Road, Brixton, SW2

# K

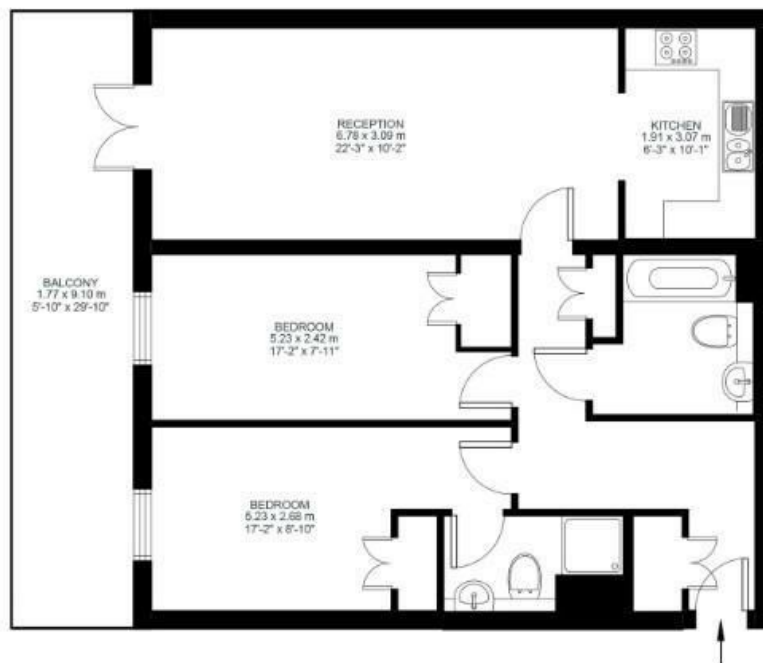
## Morrish Road

2 Bed flat

Approx internal area:

**805 sqft 75 sqm**

While we do try our very best, floor plans are produced as a guide only and we take no responsibility for the precise accuracy with which any property is represented



First Floor



Morrish Road, Brixton, SW2

