



**Solon Road, Brixton, SW2**

4 bedroom house to let

**£992 Per Week**

Furnished

## Property Details

Keating Estates are delighted to present this charming four double bedroom family home, ideally positioned between Clapham and Brixton. The ground floor features a spacious open-plan reception and dining area, complemented by a contemporary kitchen-diner that opens directly onto a sunny, private garden—perfect for entertaining.

Arranged over the upper floors are four generous double bedrooms and two modern bathrooms, offering flexible living for families or sharers alike. Located just a short walk from Brixton, residents can enjoy Brockwell Park, Brixton Village and excellent transport links. In the opposite direction lies the vibrant heart of Clapham, renowned for its diverse dining, lively nightlife and the open green spaces of Clapham Common.

## Features

- Four double bedrooms
- Two bathrooms
- Reception and dining area and separate kitchen
- Private East-facing garden
- Victorian terraced house
- Close to both the Victoria and Northern line

Council tax band E      EPC rating D (59)





Solon Road, Brixton, SW2



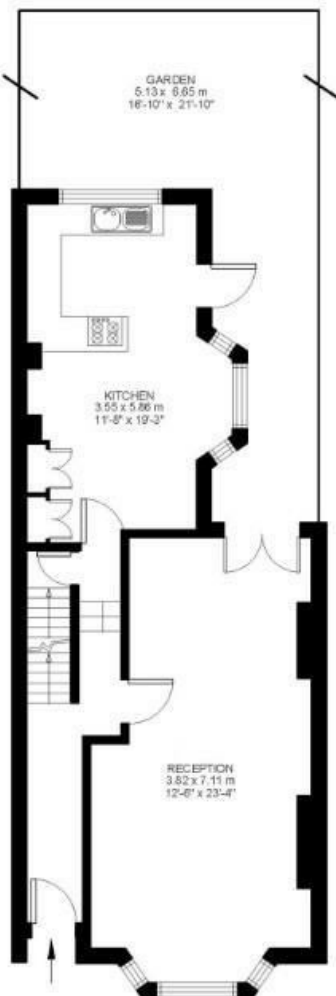
## 4 Bed house

Approx internal area:

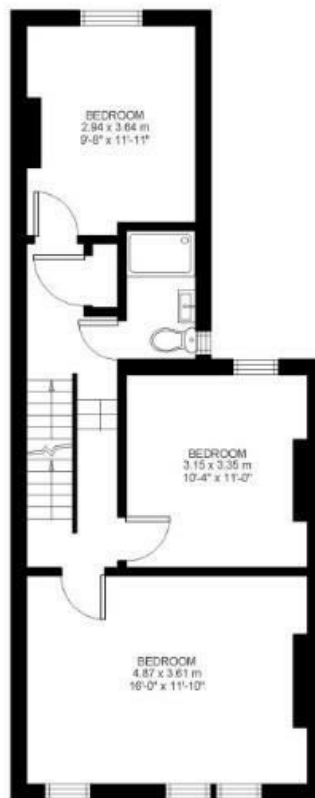
**1450 sqft 135 sqm**

While we do try our very best, floor plans are produced as a guide only and we take no responsibility for the precise accuracy with which any property is represented

## Solon Road



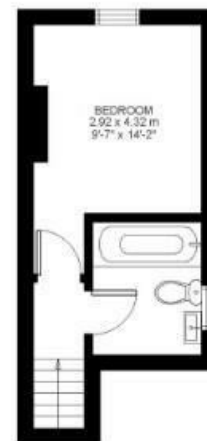
Ground Floor



First Floor



Basement



Second Floor





Solon Road, Brixton, SW2

