



**Pulross Road, Brixton, SW9**

4 bedroom house to let

**£1,038 Per Week**

Unfurnished

## Property Details

Keating Estates are proud to present to market this beautifully renovated four double bedroom Victorian house with a south-facing garden, enviably located on the tree-lined Pulross Road in the heart of Brixton.

This stunning home has been meticulously refurbished throughout, offering a perfect balance of Victorian character and contemporary style. Every element has been carefully designed to create a space that feels refined, comfortable, and effortlessly practical, with high-quality finishes and a strong attention to detail in every room.

The welcoming hallway leads to a bright front reception room. This elegant space features high ceilings of approximately ten feet, with a pretty ceiling rose, and large acoustic-glass sash windows framed with plantation shutters. The room's proportions and finish make it ideal as a formal lounge. Real wood flooring runs throughout the ground floor, lending natural warmth and continuity while offering durability and easy maintenance.

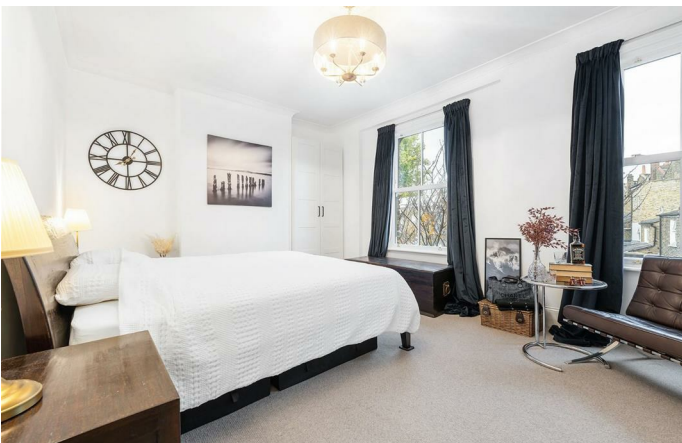
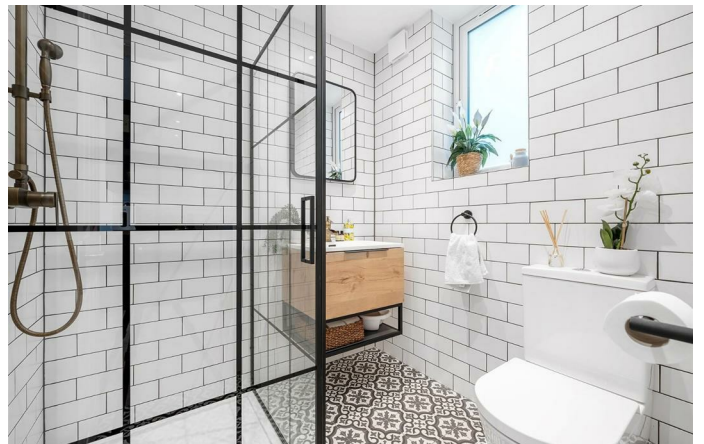
To the rear, the home opens into an impressive open-plan kitchen, dining, and reception area that forms the heart of the home. This sociable and stylish space has been thoughtfully designed for modern living, with bi-fold doors opening directly onto the south-facing garden, allowing light to

## Features

- Four double bedrooms
- Victorian house
- South-facing garden and courtyard
- Beautifully presented throughout
- Lovely park with playground and café nearby
- Central Brixton just a three-minute stroll away
- Victoria and Northern Lines plus Underground

**Council tax band E**      **EPC rating C (70)**





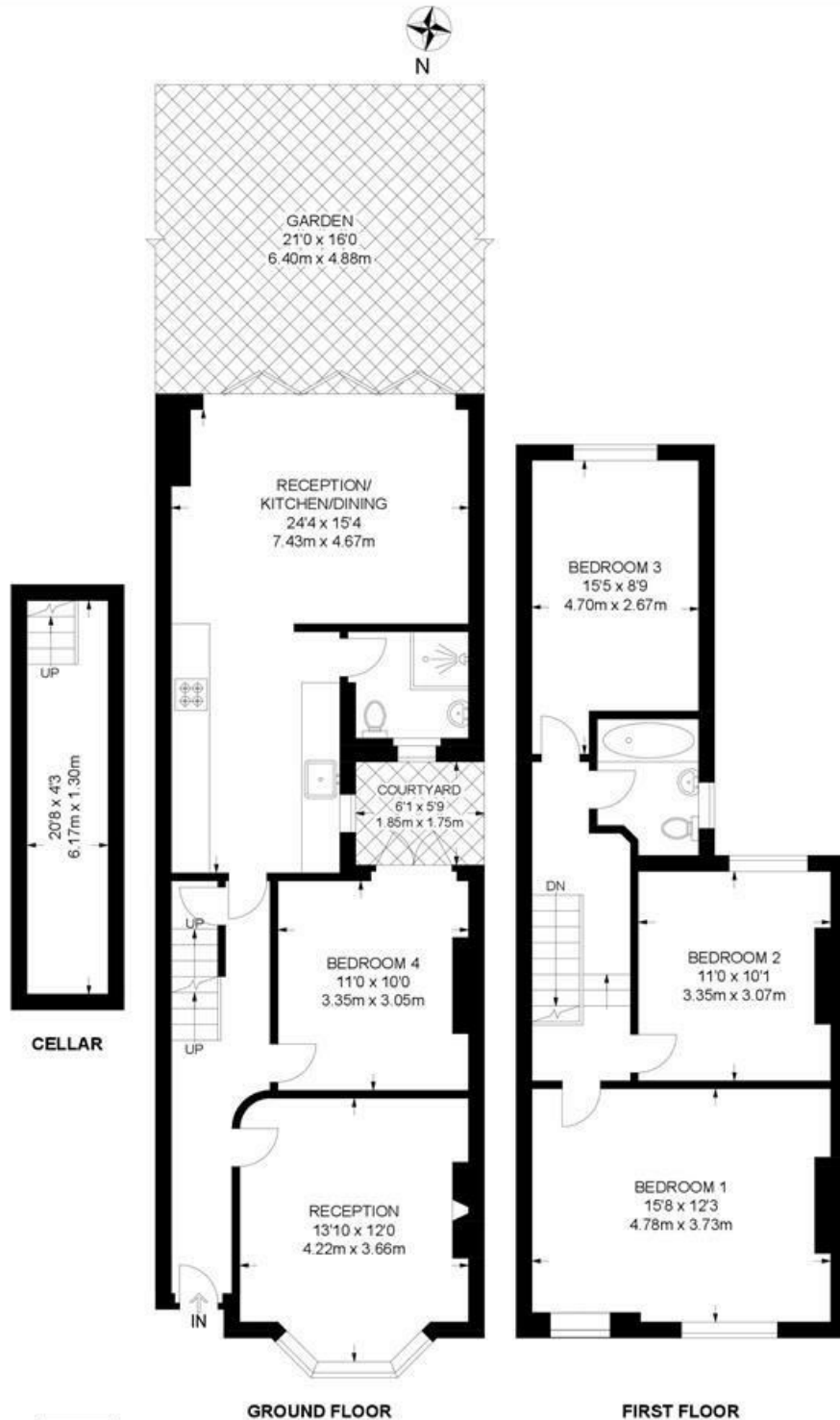
Pulross Road, Brixton, SW9

**Pulross Road, SW9**

**4 Bedroom House**

APPROXIMATE GROSS INTERNAL AREA WITH CELLAR: 1354 SQ FT / 125.8 SQ M

APPROXIMATE GROSS INTERNAL AREA WITHOUT CELLAR: 1266 SQ FT / 117.6 SQ M



While we try our very best, floor plans are produced as a guide only and we take no responsibility for the precise accuracy with which any property is represented.



Pulross Road, Brixton, SW9

