



## Peabody Hill, Herne Hill, SE21

3 bedroom maisonette for sale

£475,000

Leasehold

### Property Details

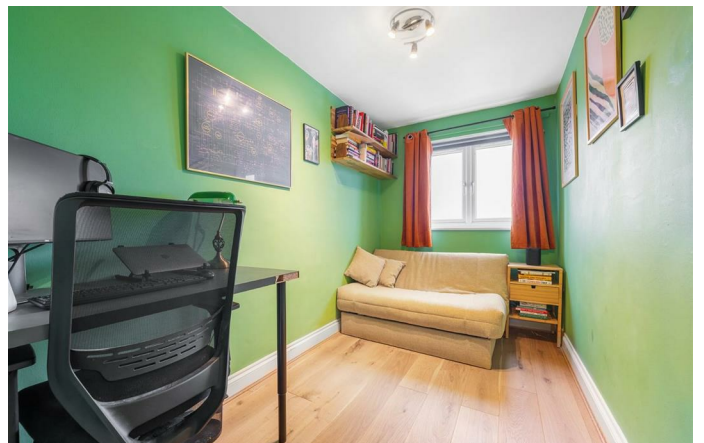
An attractive three bedroom maisonette with a private front garden and its own entrance, arranged over multiple floors and exceeding 850 square feet. Elevated on Peabody Hill, it enjoys far-reaching views over Herne Hill towards the city skyline, with a playground moments away. A charming picket-fenced garden provides an easy-to-maintain outdoor space, ideal for bike or pram storage and al-fresco dining, leading to a private front door and a hallway with handy storage. The first floor hosts bright, welcoming living spaces. The reception spans the full width of the home, with multiple windows drawing in natural light and framing sweeping views across the treetops. Engineered floorboards add warmth and character. Adjacent, the separate kitchen-diner features contemporary racing-green cabinetry, integrated appliances, a butler sink, white worktops and brick tiling, arranged around space for a dining table. Upstairs are three well-presented bedrooms and a stylish bathroom finished with on-trend terrazzo tiling, a bathtub and separate shower. Two bedrooms also enjoy the far-reaching views. A wonderfully adaptable home with amenities in every direction.

### Features

- Three bedrooms
- Private patio garden
- Maisonette with private entrance
- Far-reaching views
- Over 850 square feet split over multiple floors
- Playground moments away
- Nearby Outstanding and Good schools
- Trains around a twelve-minute stroll
- Brockwell Park a ten-minute walk
- Chain-free

Council tax band C      EPC rating C (80)





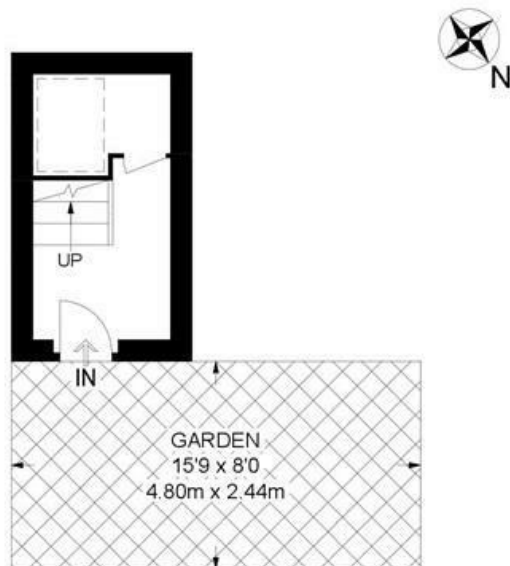




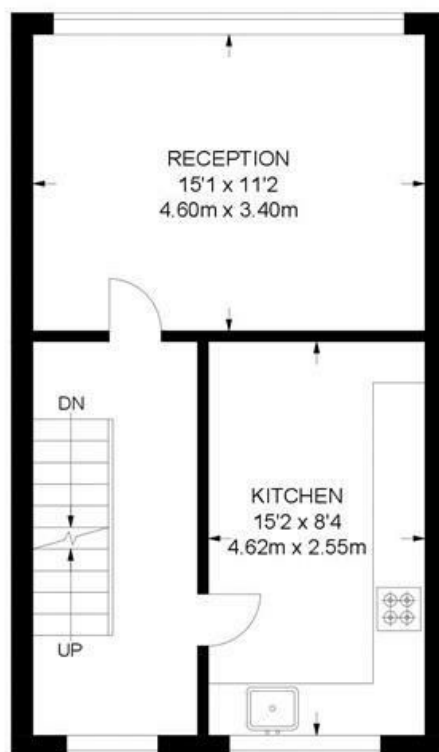
Peabody Hill, Herne Hill, SE21

**Peabody Hill, SE21**  
**3 Bedroom Maisonette**

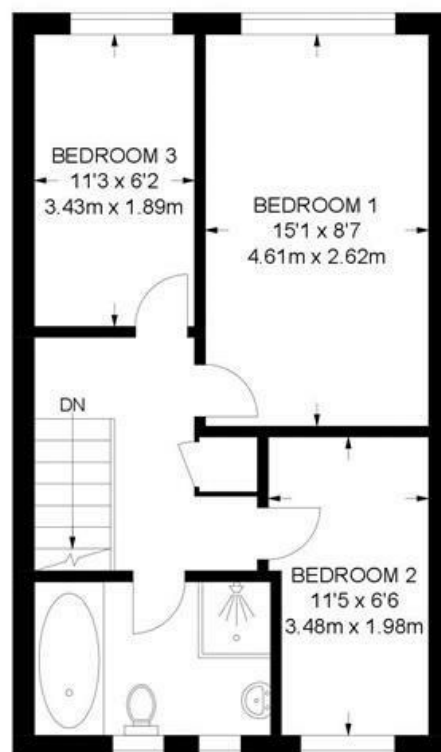
APPROXIMATE GROSS INTERNAL AREA: 863 SQ FT / 80.2 SQ M



**GROUND FLOOR**



**FIRST FLOOR**



**SECOND FLOOR**



While we try our very best, floor plans are produced as a guide only and we take no responsibility for the precise accuracy with which any property is represented.



Peabody Hill, Herne Hill, SE21

