



Solon Road, Brixton, SW2

2 bedroom flat - conversion for sale

£625,000

Leasehold

Property Details

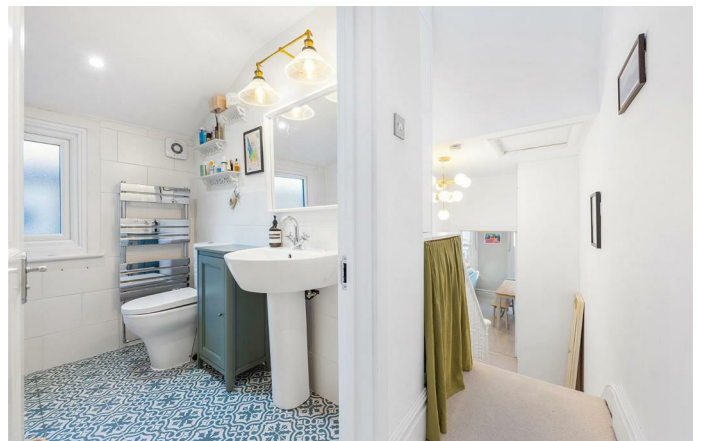
A beautifully presented two double bedroom, two bathroom apartment arranged across the upper floors of a handsome Victorian house, offering generous proportions, a clever split-level layout and an abundance of natural light throughout. As you enter the flat from the ground floor, a private internal staircase leads up to the first floor, where a semi open-plan kitchen and reception room forms the heart of the home. The reception features a striking fireplace, built-in cabinetry, and elegant corning, while the kitchen offers shaker-style cabinetry, generous worktops, a butler sink, gas hob, integrated appliances, and a stylish subway-tiled splashback. Also on this floor, set slightly apart via a short internal half-landing, is a well-proportioned second double bedroom with built-in wardrobes, alongside a contemporary bathroom with a walk-in shower. The principal bedroom occupies the upper floor, enjoying a quiet setting with built-in wardrobes and access to the main bathroom fitted with a bathtub and overhead shower. Additional benefits include loft access for storage only and double-glazed sash windows.

Features

- Two double bedrooms
- Two bathrooms
- Victorian conversion
- Beautifully presented throughout
- Split over multiple floors
- Double-glazed sash windows
- Victoria and Northern tube lines both a short stroll away
- Residential street an equal distance to Brixton and Clapham High Streets

Council tax band D

EPC rating D (65)





Solon Road, Brixton, SW2

Solon Road, SW2

2 Bedroom Flat

APPROXIMATE GROSS INTERNAL AREA: **782 SQ FT / 72.6 SQ M**



While we try our very best, floor plans are produced as a guide only and we take no responsibility for the precise accuracy with which any property is represented.

Solon Road, Brixton, SW2

