

Brixtow Mews, Brixton, SW2

2 bedroom house - mews for sale

£675,000

Freehold

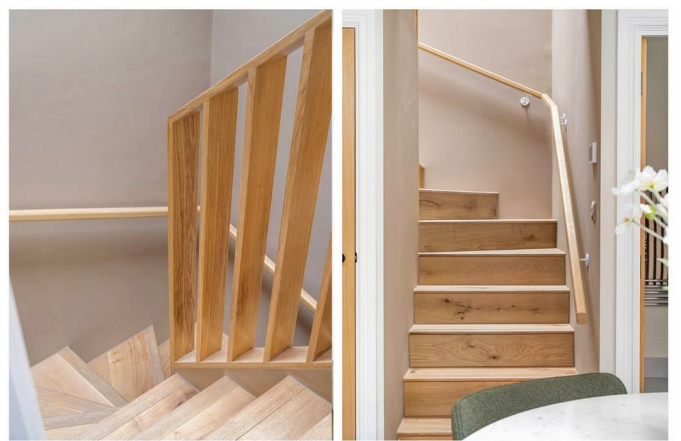
Property Details

A charming two double bedroom, two bathroom freehold Mews House with a South-West facing cobbled yard, set within an exclusive gated development on desirable Morrish Road, a friendly Victorian street moments from Brixton Hill. Forming part of just five bespoke homes in 'Brixtow Mews', this former Victorian stables has been expertly converted to combine character and luxury, with secure electric gates, a horseshoe layout and elegant communal lighting. Internally, 850 square feet of beautifully designed space unfolds, with an airy open-plan reception featuring engineered oak flooring and a wrap-around kitchen with Bosch appliances, composite stone worktops and LED mood lighting. Bi-fold stable-style windows open onto the charming courtyard. Upstairs, two generously sized and peaceful bedrooms enjoy plush carpets, bespoke wardrobes, and views over the Mews. The luxurious bathroom includes a double-ended tub beneath a Velux window and underfloor heating. Further highlights include a utility room, downstairs WC, excellent insulation, video entry system, and cycle storage.

Features

- Two double bedrooms
- Two bathrooms
- South-West facing cobbled mews
- Victorian converted stables
- Exclusive gated enclave
- Luxury finishes
- 10 year new build warranty
- 3 year Forest Bike membership
- Neighbourly road with street party and book club
- Freehold. Chain-free

Council tax band EPC rating C (79)

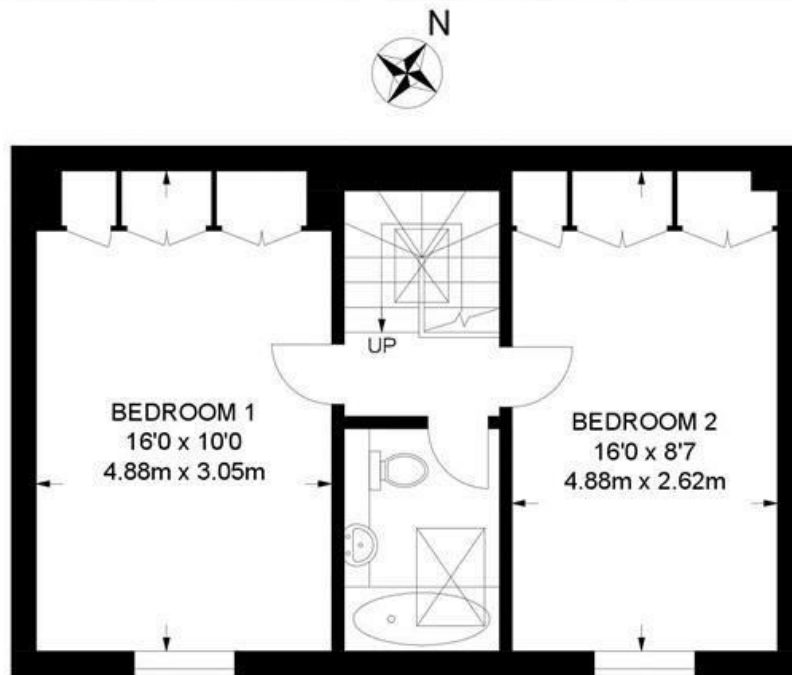




Brixton Mews, Brixton, SW2

Brixton Mews, SW2
2 Bedroom House

APPROXIMATE GROSS INTERNAL AREA: **850 SQ FT / 78.9 SQ M**



FIRST FLOOR



GROUND FLOOR



While we try our very best, floor plans are produced as a guide only and we take no responsibility for the precise accuracy with which any property is represented.

Brixton Mews, Brixton, SW2

