



Branksome Road, Brixton, SW2

2 bedroom flat to let

£507 Per Week

Furnished

Property Details

A stunning two-bedroom, top-floor flat set within a beautiful Victorian conversion. Ideally located between the Clapham and Brixton transport hubs, the property offers excellent connections across London. The area also boasts an outstanding selection of bars, restaurants, and entertainment venues, with Brixton's renowned and diverse cuisine just moments away.

The spacious principal bedroom is particularly impressive and sits adjacent to a light, modern family bathroom. The second bedroom is positioned across the hallway and is also generously sized.

This superb home is ideal for a professional couple seeking additional space or two sharers looking to enjoy a vibrant and well-connected location.

Features

- Two bedrooms
- One bathroom
- Split level
- Bright and airy throughout
- Victorian conversion
- Close to transport links

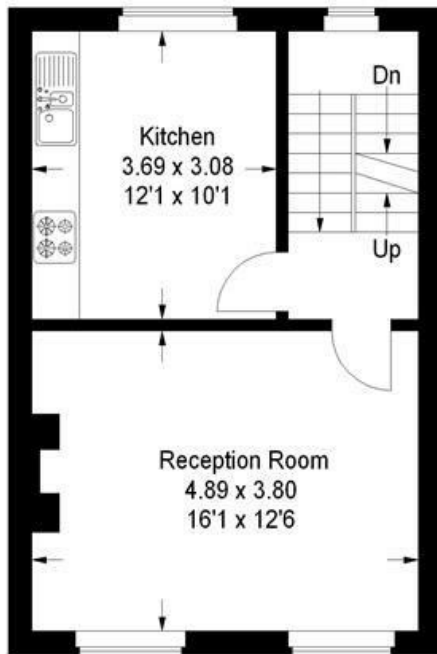
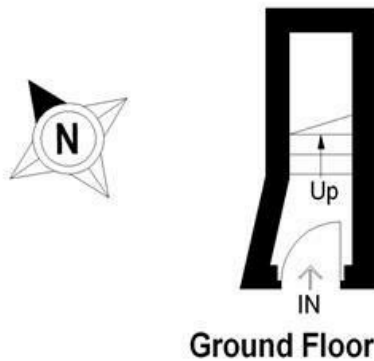
Council tax band D EPC rating C (72)



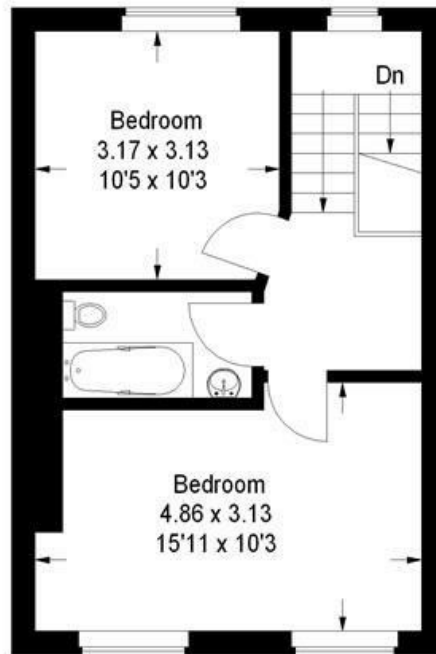
Branksome Road, Brixton, SW2

Branksome Road, SW2

Approximate Gross Internal Area
 Ground Floor = 2.7 sq m / 29 sq ft
 First Floor = 37.2 sq m / 400 sq ft
 Top Floor = 37.2 sq m / 400 sq ft
 Total = 77.1 sq m / 829 sq ft



First Floor



Top Floor

This plan is for layout guidance only. Not drawn to scale unless stated. Windows and door openings are approximate. Whilst every care is taken in the preparation of this plan, please check all dimensions, shapes and compass bearings before making any decisions reliant upon them. (ID145321)

Branksome Road, Brixton, SW2

