



**Brockwell Park Row, Brixton, SW2**

4 bedroom house - terraced to let

**£923 Per Week**

Furnished

## Property Details

Keating are proud to present this stunning four bedroom town house overlooking the green open spaces of Brockwell park. The property comprises four large double bedrooms, three modern bathrooms with two of them being en suites, a very large living room with a separate conservatory dining area and a large bright, modern kitchen. The entrance to Brockwell park entrance is only 10m from the front door and you also have a good sized paved garden at the rear of the property. The location is ideal, positioned moments from a large supermarket and a number of acclaimed independent cafes and restaurants close to Brixton Water Lane, whilst only a stone throw minute from Brockwell Park, one of the finest in London. The property benefits from all that Brixton offers from the celebrated cuisine of Brixton Village to the music venues and nightlife the area is famous for. The restaurants, cafes and the Sunday market in Herne Hill are all within easy reach via a pleasant walk through Brockwell Park. The transport links are excellent, an equidistant fifteen minute walk to both the start of the Victoria Line at Brixton tube and Herne Hill station with connections to London Bridge, Canary Wharf and The City.

## Features

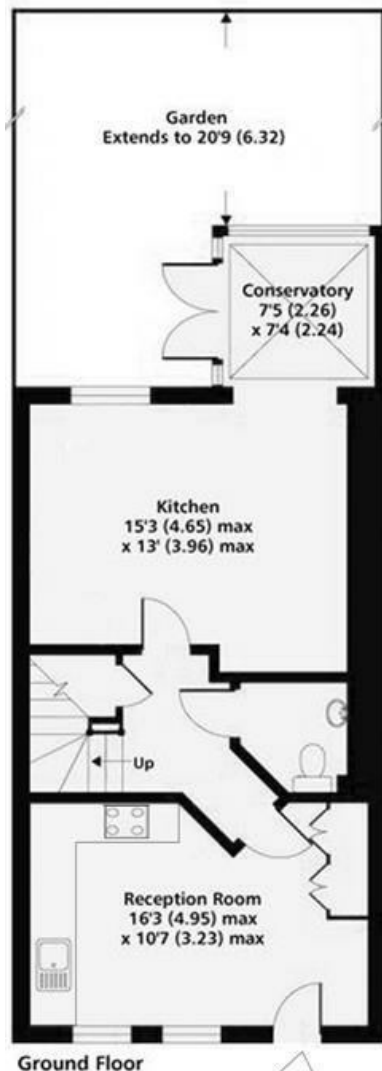
- Private garden
- Four bedrooms
- Three bathrooms
- Moments away from Brockwell park
- Conservatory
- Around a 14 minute walk to Herne Hill station
- Separate kitchen

Council tax band F      EPC rating C (76)

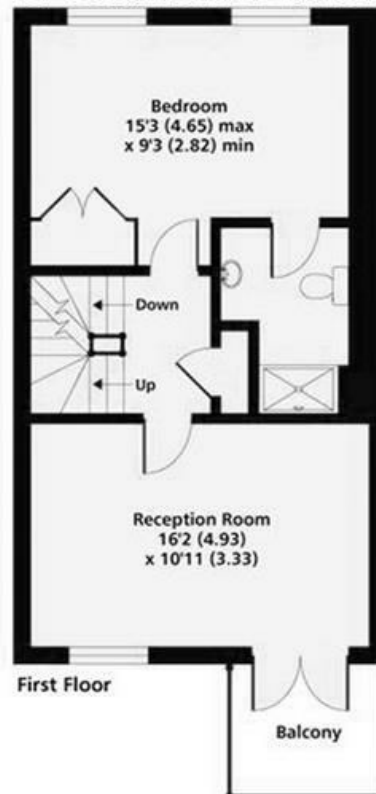




Brockwell Park Row, Brixton, SW2



## Brockwell Park Row



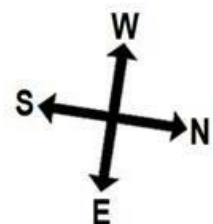
**K**

4 bed house.

Approx internal area:

1472sqft 137sqm

While we do try our very best, floor plans are produced as a guide only and we take no responsibility for the precise accuracy with which any property is represented





Brockwell Park Row, Brixton, SW2

