

**Lambert Road, Brixton, SW2**

2 bedroom flat - purpose built for sale

**£600,000**

Leasehold

## Property Details

A stunning two double bedroom penthouse apartment with multiple Juliet balconies, beautifully refurbished and thoughtfully modernised to an exceptional standard, offering a sophisticated finish and highly efficient living. Positioned in a particularly private, elevated setting, the home feels immediately welcoming with a warm neutral palette enhanced by Farrow & Ball paintwork. The spacious open-plan reception room is illuminated by floor-to-ceiling south-facing windows and sliding doors, with natural light pouring in through the Juliet balconies and offering unobstructed views. Engineered wooden flooring flows throughout, with the living area cleverly zoned for a lounge, dining area and study corner. The standout kitchen features blue cabinetry with bespoke oak veneered units, under-counter lighting, and an island with a waterfall quartz worktop, plus integrated appliances and an app-controlled air conditioning unit. Both double bedrooms have bespoke built-in wardrobes and the principal includes a Juliet balcony, air conditioning and an en suite with terrazzo-style tiles. A modern family bathroom and practical storage complete the home.

Council tax band C

EPC rating C (80)

## Features

- Two double bedrooms
- Penthouse apartment
- Multiple Juliet balconies
- Bright, predominately South-facing aspect
- Air conditioning in the kitchen and principal bedroom
- Partially bespoke kitchen featuring quartz worktops
- Central Brixton a ten-minute stroll
- Brockwell Park nearby
- Clapham and Abbeville Village a twenty-minute walk
- Victoria and Northern lines







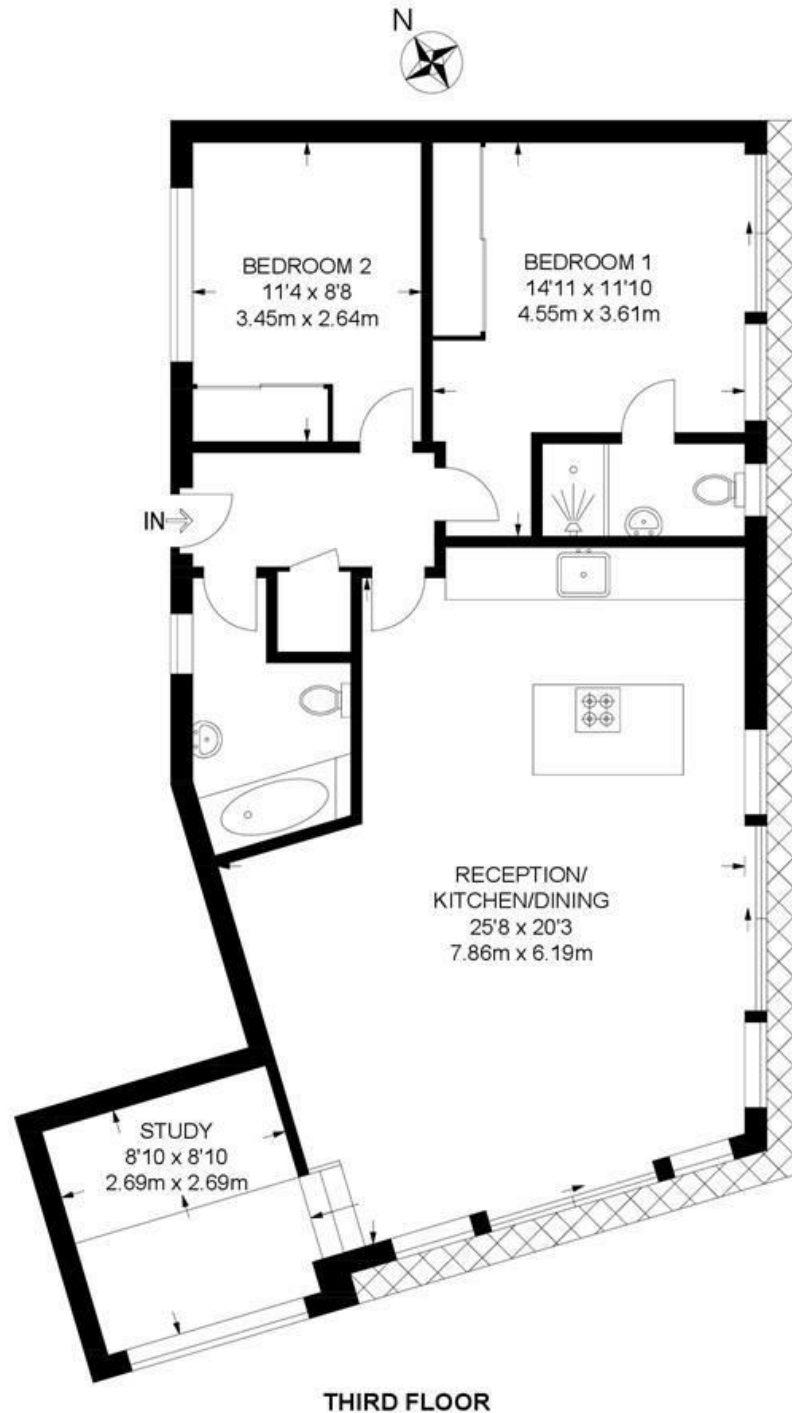


Lambert Road, Brixton, SW2

## Lambert Road, SW2

### 2 Bedroom Flat

APPROXIMATE GROSS INTERNAL AREA: 880 SQ FT / 81.7 SQ M



While we try our very best, floor plans are produced as a guide only and we take no responsibility for the precise accuracy with which any property is represented.



Lambert Road, Brixton, SW2

