



## Leander Road, Brixton, SW2

2 bedroom flat - conversion for sale

**£525,000**

Share of Freehold

### Property Details

An impressive two double bedroom Victorian conversion with access to a generous South-East facing flat roof. The home centres around a beautiful open-plan reception, measuring nearly six metres wide. A large bay window with wooden sashes fills the space with natural light and provides the ideal setting for dining and entertaining. There is room for a comfortable lounge area, complemented by a tropical feature wall, warmly toned flooring and downlighting. The kitchen is arranged in an L-shape to maximise storage and preparation space, with a sociable peninsula. Two genuine double bedrooms are separated for privacy. The principal bedroom sits quietly to the rear with fitted sliding wardrobes and French doors opening to the flat roof. The second bedroom is another comfortable double, while the bathroom is finished in neutral marbled tiling with a bathtub, overhead rain shower, storage and heated towel rail. Additional benefits include recent electrical works, a serviced boiler and monthly communal cleaning.

### Features

- Two double bedrooms
- Access to a South-East facing flat roof
- Victorian conversion
- Over 650 square feet
- Sought-after road with annual party
- Large supermarket in five minutes
- Brockwell Park a five-minute walk
- Herne Hill a ten-minute stroll through the park
- Brixton a fourteen-minute walk
- Share of freehold. Chain-free

Council tax band C

EPC rating C (77)



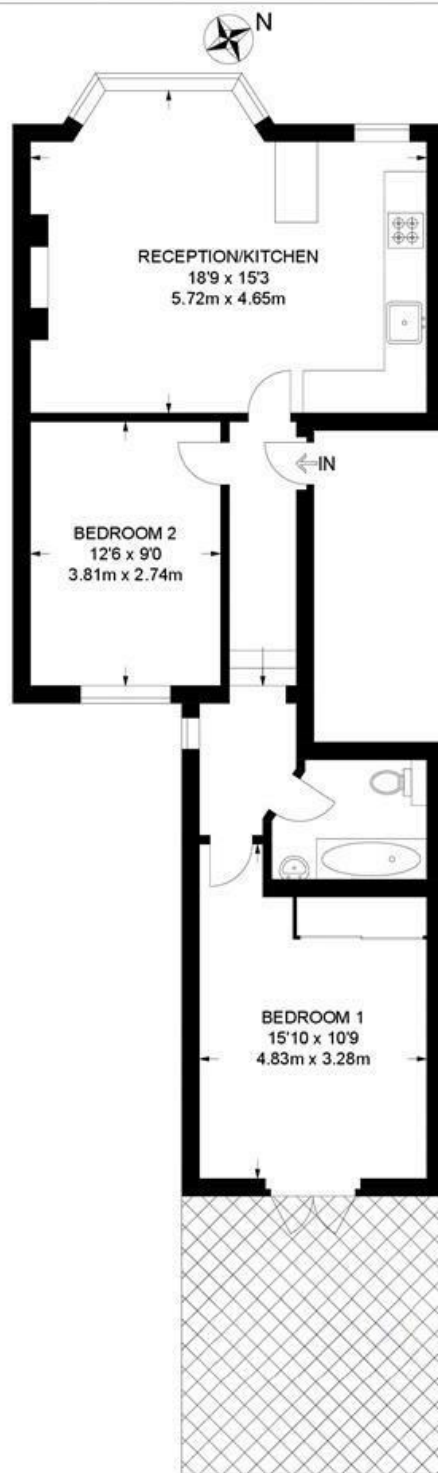


Leander Road, Brixton, SW2

**Leander Road, SW2**

**2 Bedroom Flat**

APPROXIMATE GROSS INTERNAL AREA: 651 SQ FT / 60.5 SQ M



**FIRST FLOOR**



While we try our very best, floor plans are produced as a guide only and we take no responsibility for the precise accuracy with which any property is represented.



Leander Road, Brixton, SW2

