



Brixton Hill, Brixton, SW2

2 bedroom flat - conversion for sale

£515,000

Leasehold

Property Details

A beautiful two bedroom flat with a South-East facing garden, in an end-of-terrace Victorian conversion just a few doors from a charming garden square. Set back from the street on a prominent corner plot, the property enjoys excellent kerb appeal with an elegant arched porch and striking black front door. Two well-proportioned bedrooms are finished in calming tones. The principal features a large sash bay window, original wooden flooring, fitted wardrobes and space for a king-size bed, while the second also has fitted wardrobes and storage, space for a double bed and garden views. A beautiful bathroom sits adjacent, featuring a bathtub with rainfall shower, complemented by brass fittings and soft-toned finishes. A separate WC adds further practicality. The living space blends modern lines with period features, flooded with natural light from a bay window. A dining area provides a welcoming setting for shared meals and a solid wood kitchen has warm wooden worktops and a butler sink. The private South-East facing garden provides a low-maintenance outdoor retreat with side access gate, making it quick to head to the local park a few doors down too. A tanked cellar provides plenty of storage.

Council tax band D

EPC rating D (60)

Features

- Two bedrooms
- South-East facing garden with side access gate
- End-of-terrace Victorian conversion
- Beautifully presented
- Bathroom plus additional WC
- Local shops, pub, schools, park and cafes
- Central Brixton around a fifteen-minute walk or five-minute bus
- Nine-minute walk to Streatham Hill
- Excellent variety of transport links
- Chain-free



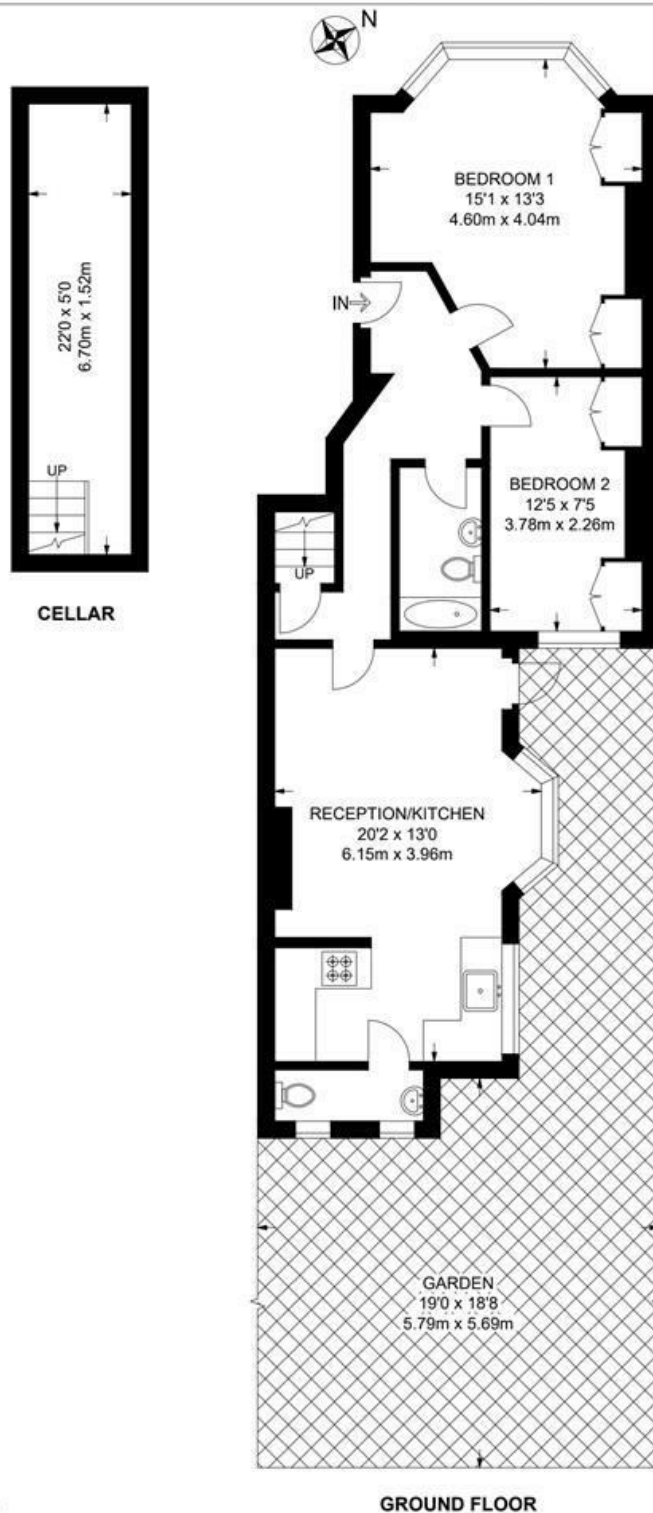


Brixton Hill, Brixton, SW2

Brixton Hill, SW2

2 Bedroom Flat

APPROXIMATE GROSS INTERNAL AREA WITH CELLAR: **763 SQ FT / 70.9 SQ M**



While we try our very best, floor plans are produced as a guide only and we take no responsibility for the precise accuracy with which any property is represented.

Brixton Hill, Brixton, SW2

