

Aliwal Road, Clapham Junction, SW11

2 bedroom flat - conversion for sale

Leasehold

Property Details

An elegant two bedroom flat with a private rear garden, set within a charming Victorian property on the sought-after Aliwal Road, moments from Wandsworth Common and Northcote Road. To the rear, an open-plan reception room features wooden flooring and a thoughtfully designed kitchen with dark blue shaker-style cabinetry, integrated appliances, and a peninsular housing a butler sink and dishwasher, subtly zoning the space. Skylights flood the dining area with natural light, while bi-fold doors lead seamlessly to a low-maintenance garden, ideal for entertaining, complemented by a lightwell courtyard off the kitchen. The principal bedroom boasts a bay window with plantation shutters, a window seat, fitted wardrobes, and a feature fireplace. The second bedroom also has fitted storage and courtyard views. The bathroom offers a bathtub with overhead shower, and a spacious cellar provides generous storage. Beyond your own garden, the vast green open spaces of Wandsworth Common begin just a two-minute stroll from the front door, effectively offering an additional outside space that you don't have to maintain. *Property has been virtually staged with furnishings*

Features

- Two bedrooms
- Private garden
- Victorian conversion
- Quiet street with no through-traffic
- Vast array of amenities, shops and cafes on the doorstep with St John's Road just a one-minute walk
- Desirable Northcote Road in two-minutes
- Excellent transport links with Clapham Junction station a six-minute stroll
- Wandsworth Common a two-minute walk, Clapham Common in seven
- Chain-free

Council tax band C

EPC rating D (62)

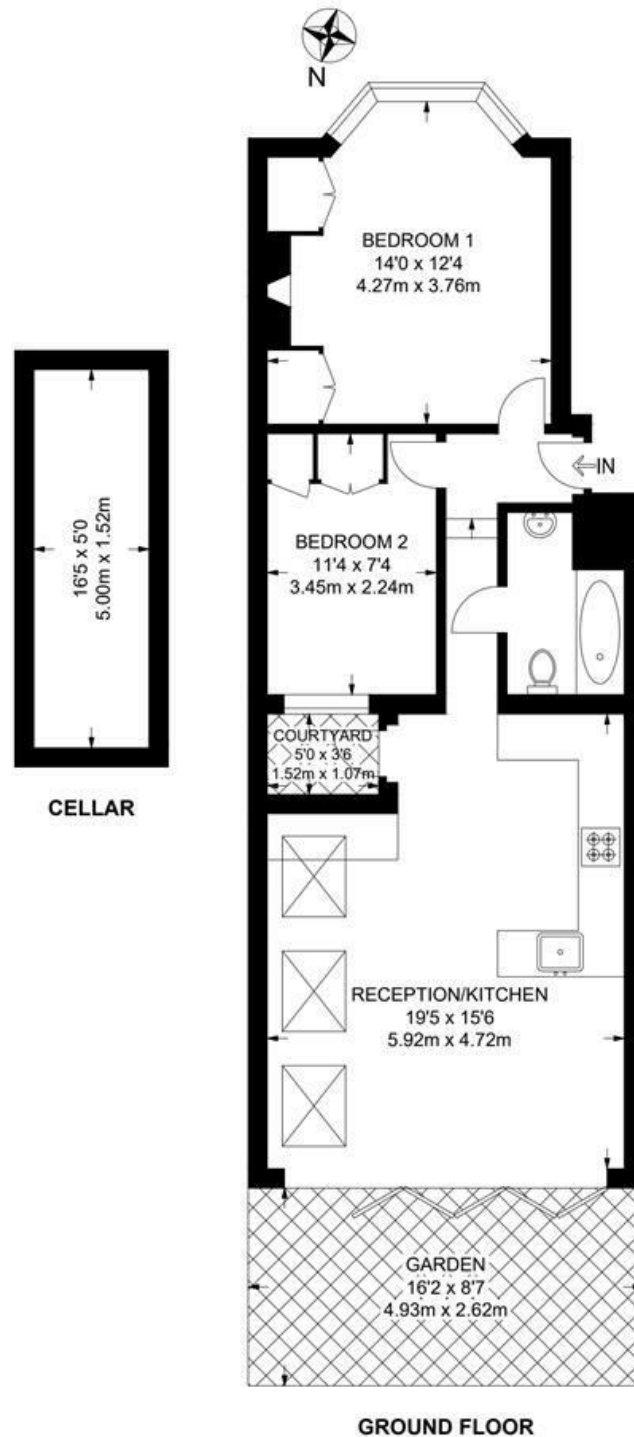


Aliwal Road, Clapham Junction, SW11

Aliwal Road, SW11
2 Bedroom Flat

APPROXIMATE GROSS INTERNAL AREA WITH CELLAR: **704 SQ FT / 65.4 SQ M**

APPROXIMATE GROSS INTERNAL AREA WITHOUT CELLAR: **622 SQ FT / 57.8 SQ M**



While we try our very best, floor plans are produced as a guide only and we take no responsibility for the precise accuracy with which any property is represented.

Aliwal Road, Clapham Junction, SW11

