



Coldharbour Lane, SE5
1 bedroom flat - conversion to let

£403 Per Week
Unfurnished

Property Details

Keating Estates are proud to present this brand new luxury one bedroom apartment, ideally located a short walk from Brixton and Loughborough Junction stations.

Finished to the design team's signature architectural standard, the property seamlessly combines period elegance with contemporary luxury, with meticulous attention to detail throughout. The apartment comprises a generous double bedroom, a high-specification bathroom and a spacious living area. The modern separate kitchen comes fully equipped with all essential appliances. Further benefits include wood flooring throughout and secure bike storage.

Ideally positioned just a two-minute walk from Loughborough Junction station, the property offers excellent transport links with direct services to Blackfriars, Farringdon and King's Cross St Pancras. King's College Hospital is also within easy walking distance. Brixton is approximately a twelve-minute walk away, providing access to Brixton Village, POP Brixton, and a vibrant selection of restaurants, bars and nightlife, as well as the Victoria Line at Brixton Underground station.

Green open spaces including Ruskin Park and the award-winning Brockwell Park are both within easy strolling distance, while the amenities of leafy Herne Hill are just a fifteen-minute walk away. The creative hub of Camberwell is also close by, highlighting the exceptional lifestyle options available from this well-located and characterful home.

Features

Council tax band **EPC rating D (62)**



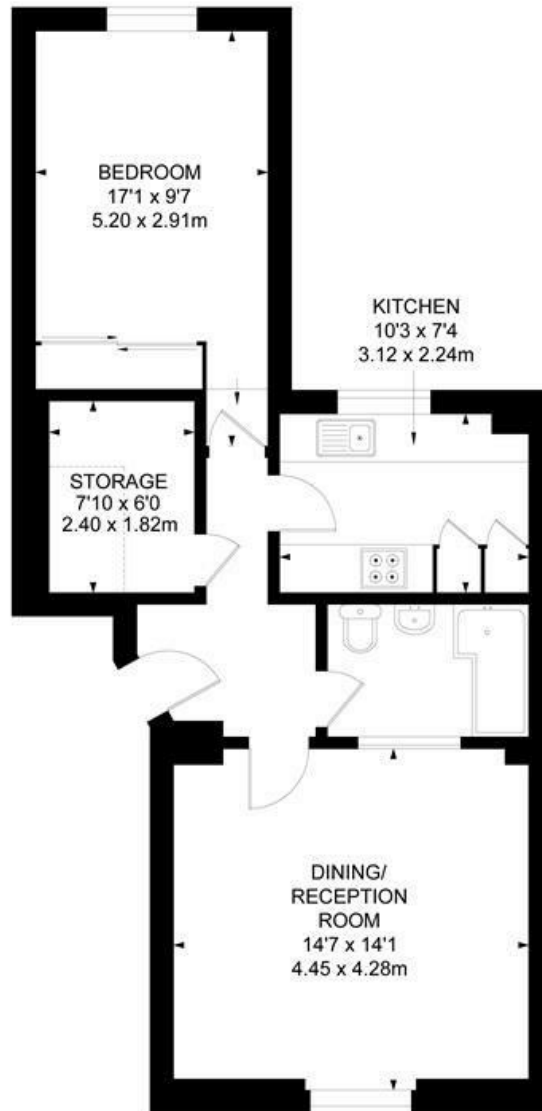
Coldharbour Lane, SE5

Coldharbour Lane, SE5

1 Bedroom Flat

APPROXIMATE GROSS INTERNAL AREA :

595 SQ FT / 55.26 SQ M



RAISED GROUND FLOOR



While we try our very best, floor plans are produced as a guide only and we take no responsibility for the precise accuracy with which any property is represented.



Coldharbour Lane, SE5

