

Deerbrook Road, Herne Hill, SE24

1 bedroom flat - conversion for sale

Share of Freehold

Property Details

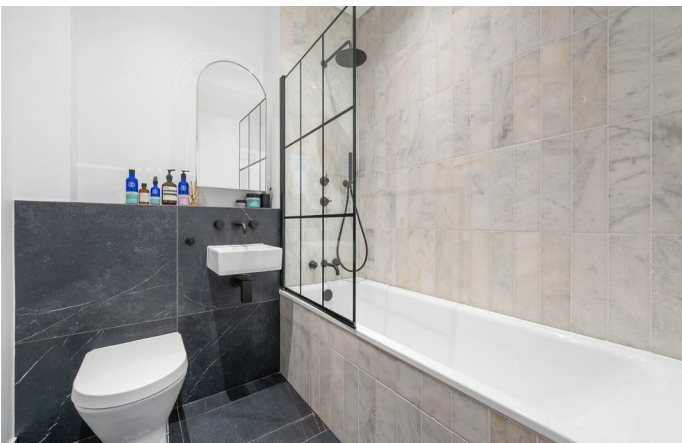
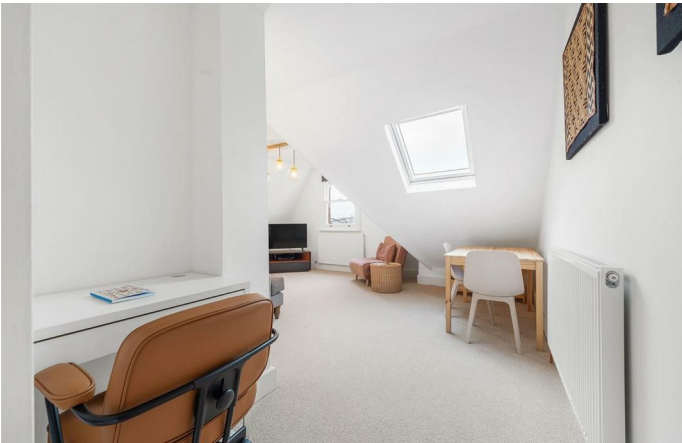
A beautifully presented one double bedroom split-level Victorian conversion, occupying the top floor of a handsome period property, ideally positioned moments from Brockwell Park. This special home has been lovingly maintained over the past nine years, with notable upgrades including a new roof in 2021 and a stylish bathroom completed in 2022. Recently redecorated, the property further benefits from new radiators to the reception and luxurious wool carpets throughout. The kitchen is fully functional and recently re-tiled, offering scope for a purchaser to personalise if desired. Bright and private, the reception room features charming lofted ceilings, generous proportions for living and dining, and a handy study nook by the entrance, complemented by contemporary pendant lighting. The kitchen sits beneath a skylight with a large serving hatch, creating a sociable yet practical layout with ample storage and wooden worktops. The bedroom is quietly positioned to the rear with leafy views, fitted wardrobe and plush carpeting. A characterful spindle staircase leads to a light-filled landing with window seat, while the bathroom is tastefully finished with slate-grey tiling, overhead shower, Crittall-style screen and sleek black fittings.

Council tax band B

EPC rating C (75)

Features

- One double bedroom
- Victorian conversion
- Bright and private setting split over the upper floors
- Charming features
- Sought-after quiet road in Herne Hill close to Brockwell Park
- Trains a five-minute stroll away
- Short walk to Tulse Hill and village-esque Herne Hill
- Brixton and Victoria Line nine-minutes by bus
- Share of freehold

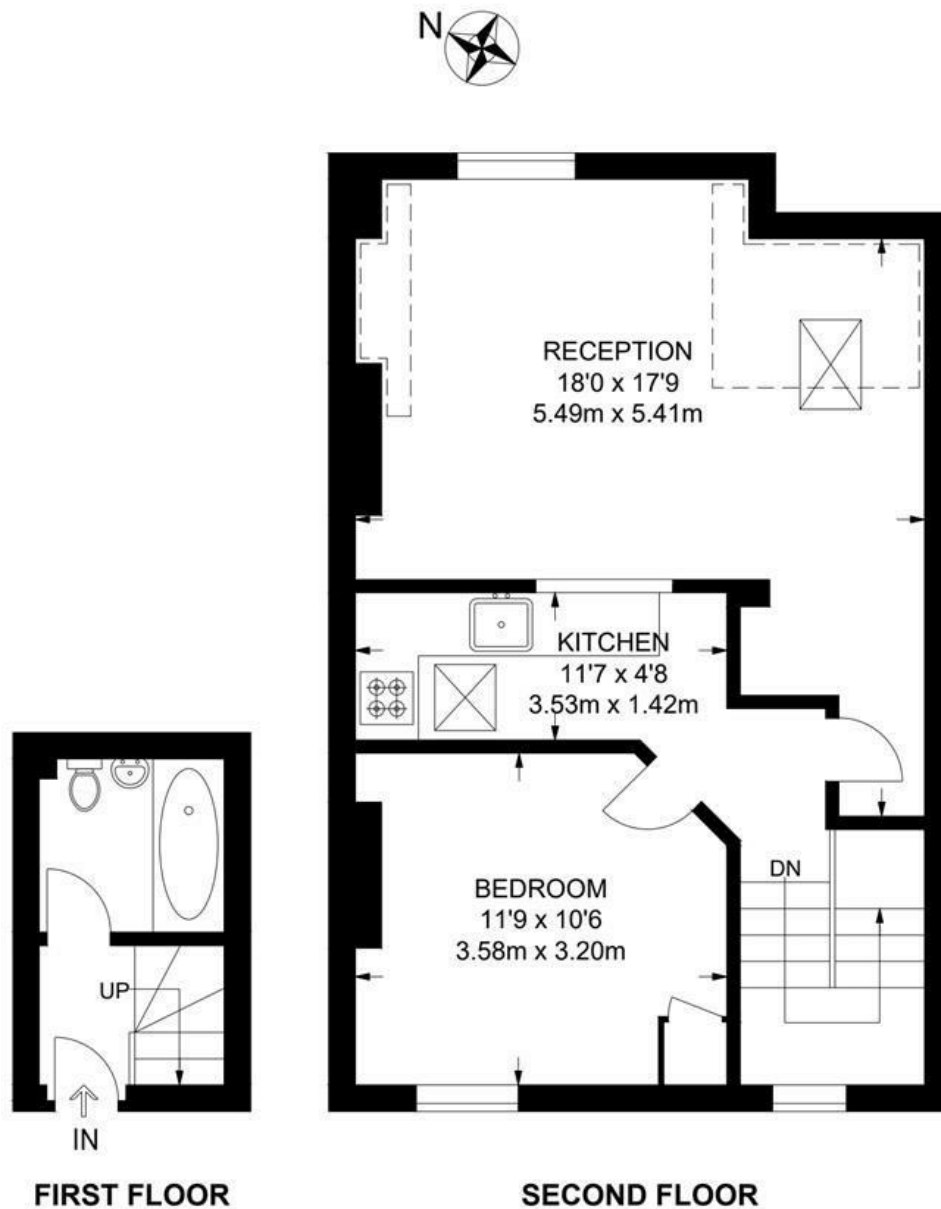


Deerbrook Road, Herne Hill, SE24

Deerbrook Road, SE24

1 Bedroom Flat

APPROXIMATE GROSS INTERNAL AREA: **568 SQ FT / 53 SQ M**



While we try our very best, floor plans are produced as a guide only and we take no responsibility for the precise accuracy with which any property is represented.

Deerbrook Road, Herne Hill, SE24

