

## Streatham High Road, Streatham, SW16

3 bedroom flat - purpose built for sale

£600,000

Leasehold

### Property Details

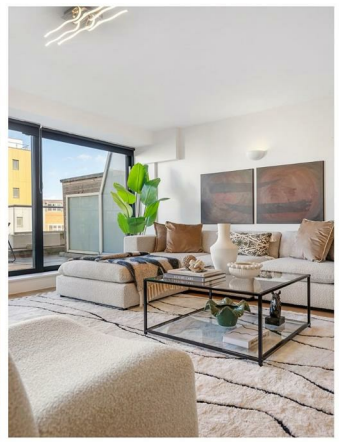
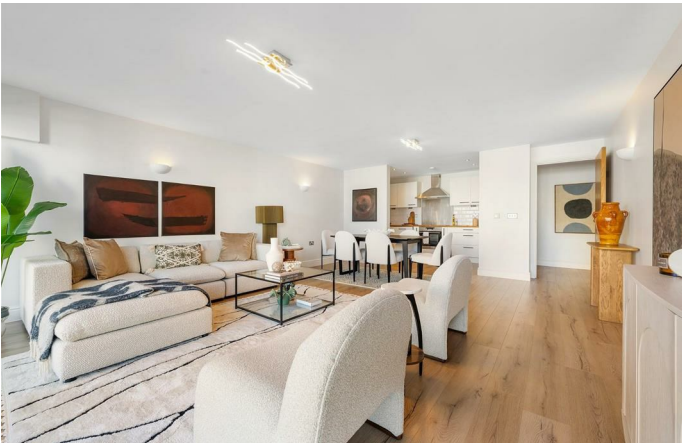
This exceptional three double bedroom, two bathroom apartment, complete with an allocated parking space, is set within a Grade II listed former cinema, featuring a striking 1930s Art Deco façade and preserved foyer, combining architectural heritage with contemporary living. Occupying a generous fourth-floor footprint, the home boasts a lateral layout and a private balcony spanning its full width, seamlessly connecting indoor and outdoor spaces. The heart of the apartment is a semi open-plan kitchen and reception, with timeless cream cabinetry, a classic subway-tiled splashback, and floor-to-ceiling glazing that floods the space with natural light. All three bedrooms are generous doubles, each with direct balcony access, while the principal bedroom includes a private ensuite with bath. A stylish second bathroom serves the remaining bedrooms. Thoughtfully designed, the apartment balances mid-century character with modern finishes, creating a bright, open, and elegant living environment, enhanced by the unique history and architectural charm of its former cinema setting.

### Features

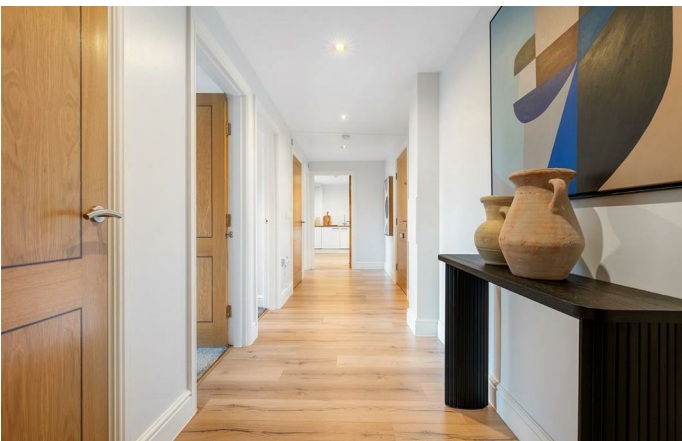
- Three double bedrooms
- Two bathrooms
- Substantial private balcony
- Allocated car parking space
- Grade II listed façade
- Architectural character
- Frequent bus routes, with easy access to Brixton, Balham, Tooting, Clapham, and Herne Hill
- Streatham Hill and Streatham Station within walkable distance
- Fitness First, Virgin Active and Streatham Tate Library on your doorstep
- Chain-free

Council tax band F    EPC rating B (85)





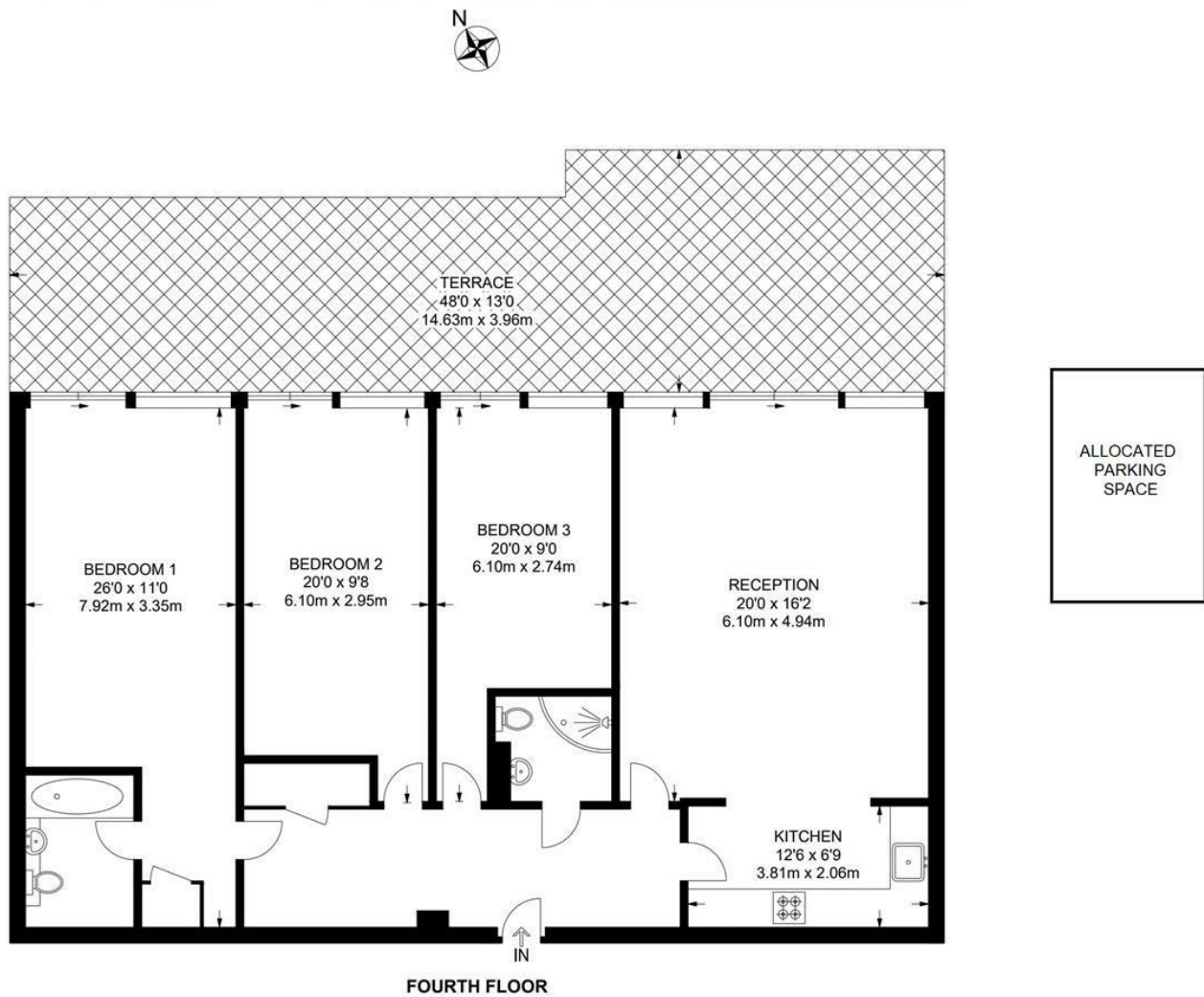




Streatham High Road, Streatham, SW16

**Streatham High Road, SW16**  
**3 Bedroom Flat**

APPROXIMATE GROSS INTERNAL AREA: 1245 SQ FT / 115.7 SQ M



While we try our very best, floor plans are produced as a guide only and we take no responsibility for the precise accuracy with which any property is represented.



Streatham High Road, Streatham, SW16

