



Helix Gardens, Brixton, SW2

2 bedroom flat - conversion for sale

£700,000

Share of Freehold

Property Details

A spacious Victorian two double bedroom garden flat, complete with a South-facing private garden, allocated off-street parking and access to a 60-foot residents' garden, set on one of Brixton's most popular leafy roads. Offering over 800 square feet, the property blends contemporary design with period charm, including exposed brickwork and original Victorian tiling. New double glazing with heritage timber frames to the front and Crittall-style doors to the rear, alongside underfloor heating, ensure warmth and efficiency. The open-plan kitchen reception is ideal for entertaining, with ample storage, wooden worktops, skylights and garden views, opening seamlessly onto the landscaped garden, recently repaved with new fencing. Both double bedrooms are well-proportioned, filled with natural light and enjoy pleasant leafy outlooks. A stylish renovated bathroom and exceptional storage, including ceiling storage and cellar, complete the home. Located moments from amenities and transport links, combining lifestyle, space and convenience perfectly.

Features

- Two double bedrooms
- Victorian conversion
- South-facing private garden plus additional 60 foot residents' garden
- Off-street allocated parking space
- Characterful features
- Over 800 square feet
- Ample built-in storage and a cellar
- Highly desirable quiet residential street, in a leafy setting
- Close to Brockwell Park
- Share of freehold

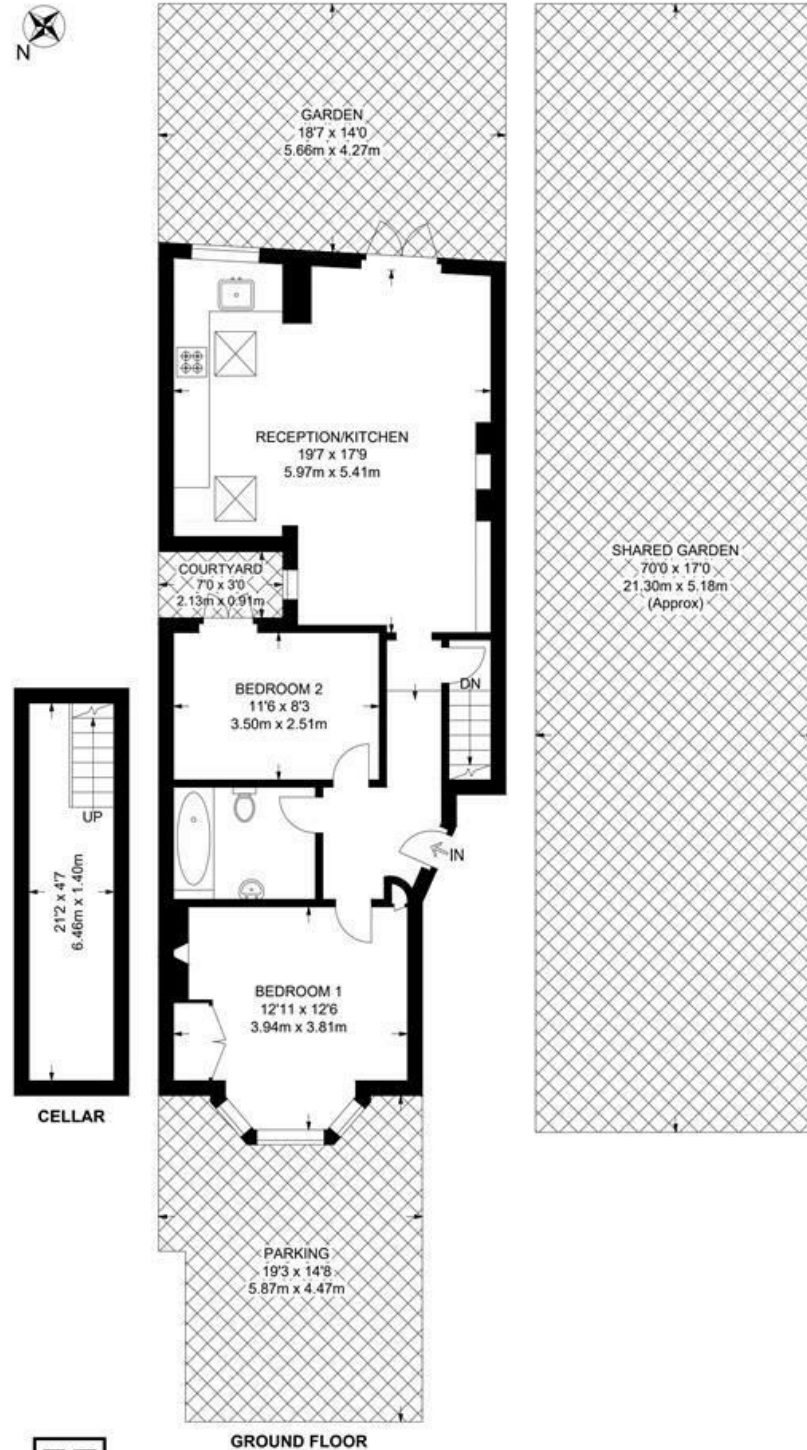
Council tax band D EPC rating C (73)





Helix Gardens, SW2
2 Bedroom Flat

APPROXIMATE GROSS INTERNAL AREA WITH CELLAR: **805 SQ FT / 74.8 SQ M**
 APPROXIMATE GROSS INTERNAL AREA WITHOUT CELLAR: **704 SQ FT / 65.4 SQ M**



While we try our very best, floor plans are produced as a guide only and we take no responsibility for the precise accuracy with which any property is represented.

Helix Gardens, Brixton, SW2

