



**Jeffreys Road, Clapham, SW4**

1 bedroom flat - conversion for sale

**£410,000**

Leasehold

## Property Details

This charming raised ground floor one bedroom apartment is set within an attractive Victorian conversion on Jeffreys Road. The heart of the home is a beautifully proportioned reception room with high ceilings, ornate corning and a striking bay window fitted with plantation shutters, creating a perfect dining nook. Wooden floorboards and an elegant marble-surround fireplace add warmth and character, making the space ideal for both relaxing and entertaining. Just off the reception room, the semi open-plan kitchen is fitted with contemporary cabinetry and ample storage, with folding doors allowing it to be closed off for a more separate layout if desired. The bedroom is quietly positioned to the rear, featuring large sash windows that fill the room with natural light. A bright, well-sized bathroom completes the property, offering a full-sized bathtub with overhead shower and a window for ventilation.

## Features

- One bedroom
- Victorian Conversion
- Almost 500 square feet
- Spacious semi open-plan reception
- Bright and airy throughout
- Moments from Clapham North and Stockwell with the Victoria and Northern Lines
- Clapham Common, Larkhall Park and Battersea Park, all with walking distance
- Chain-free

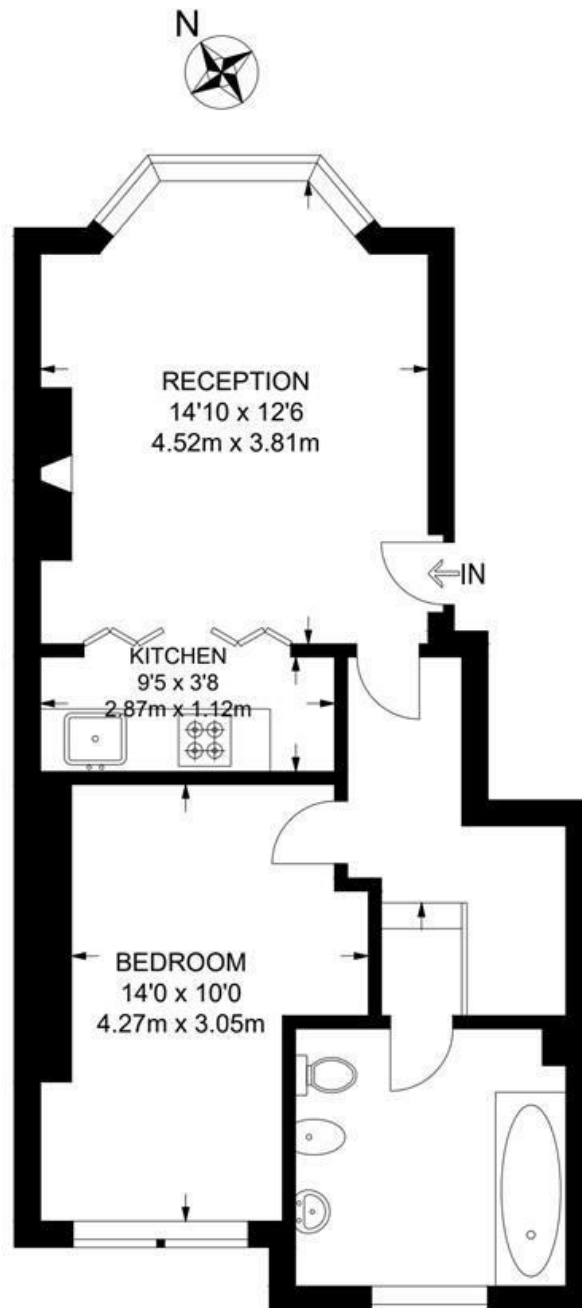
Council tax band C    EPC rating D (64)



Jeffreys Road, Clapham, SW4

**Jeffreys Road, SW4**  
**1 Bedroom Flat**

APPROXIMATE GROSS INTERNAL AREA: **480 SQ FT / 44.6 SQ M**



**RAISED GROUND FLOOR**



While we try our very best, floor plans are produced as a guide only and we take no responsibility for the precise accuracy with which any property is represented.

Jeffreys Road, Clapham, SW4

