



Talma Road, Brixton, SW2

4 bedroom house - end terrace for sale

£1,100,000

Freehold

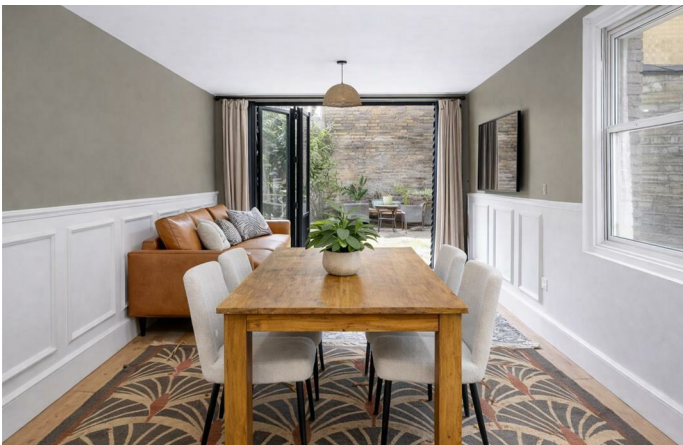
## Property Details

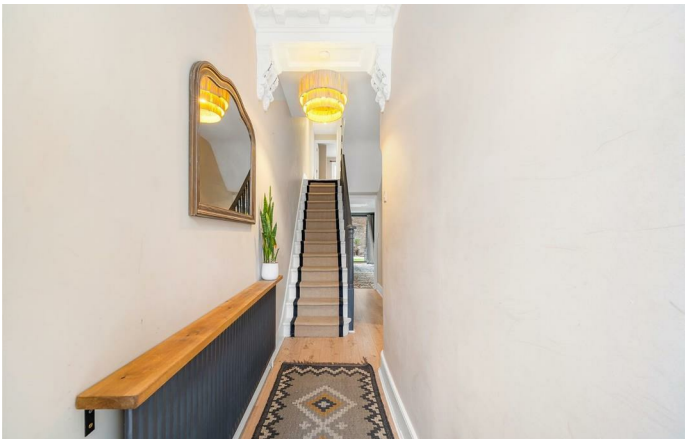
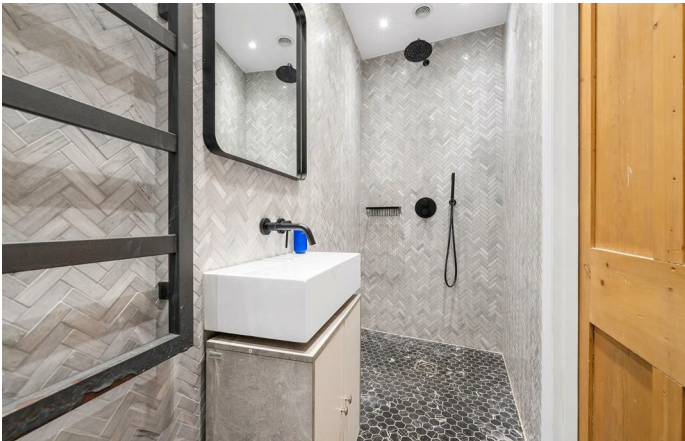
A beautifully renovated four bedroom, three bathroom end-of-terrace Victorian house with a delightful South-West facing garden. To the front, an inviting open-plan kitchen and reception room showcases high corniced ceilings and an elegant flow to the space. The reception area sits comfortably around the sash bay window to the front, while the shaker-style kitchen is arranged in a sociable U-shape overlooking the garden, complete with a butler sink, range cooker, and generous breakfast peninsula. A second reception room to the rear provides flexible dining and lounging space, with bifold doors opening onto the garden for effortless indoor-outdoor living. The walled garden is paved with a lawn area and enjoys uninterrupted sunlight throughout the day, making it a true suntrap. Upstairs, the principal suite spans the width of the house with arched sash windows, exposed floorboards, and a stylish ensuite. Two further quiet bedrooms are served by a family bathroom, while a spacious loft suite completed in June 2024 offers a Juliette balcony and separate luxurious bathroom. Recent renovations include a new kitchen, two bathrooms, and a transferable ten-year warranty.

## Features

- Four bedrooms
- Three bathrooms
- South-West facing garden, plus Juliette balcony
- End-of-terrace Victorian house
- Beautifully renovated
- Sought-after residential street
- Central Brixton a four-minute walk
- Herne Hill around a twelve-minute stroll
- Brockwell Park nearby
- Freehold

Council tax band E    EPC rating D (63)

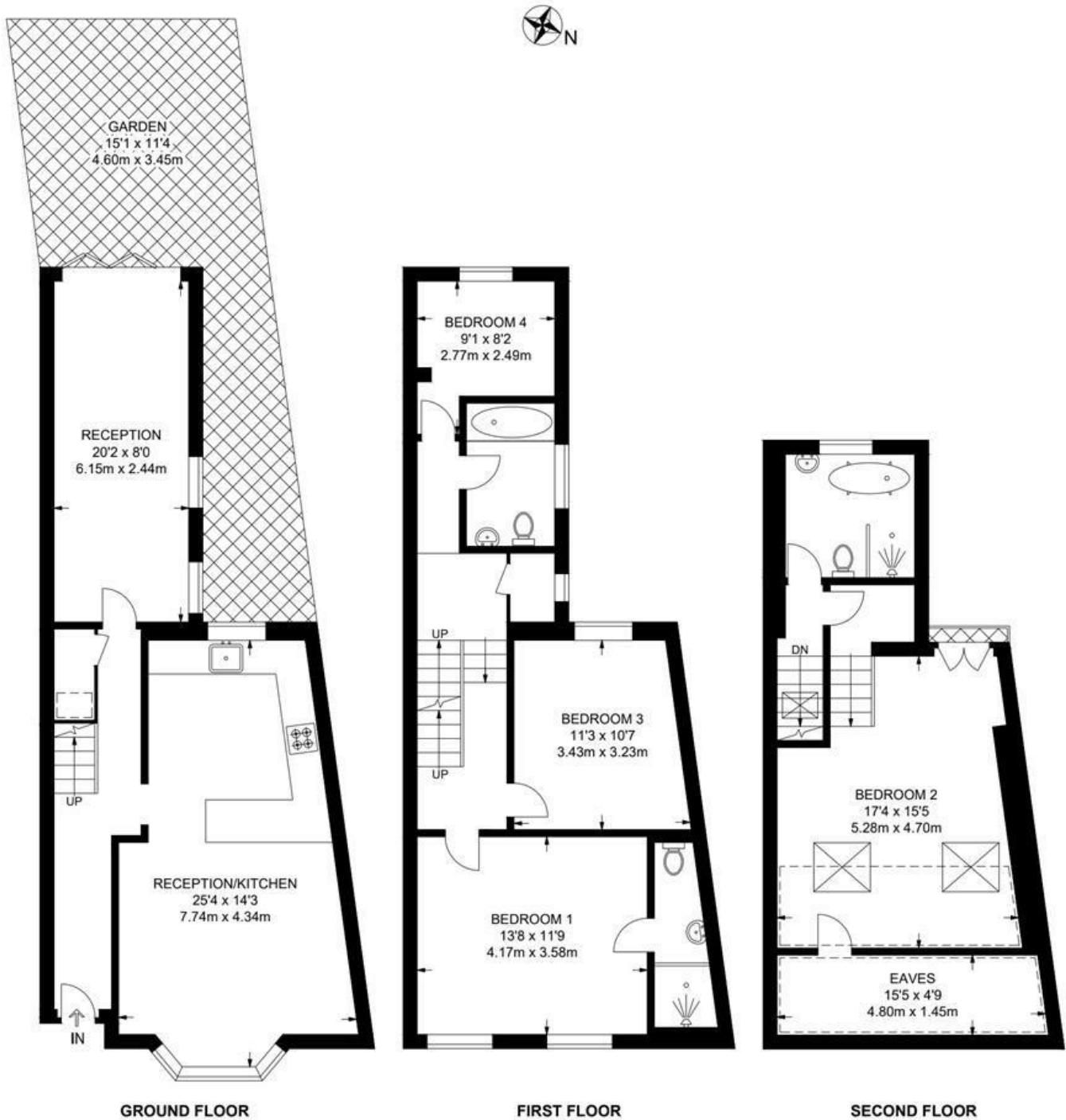




Talma Road, Brixton, SW2

**Talma Road, SW2**  
**4 Bedroom House**

APPROXIMATE GROSS INTERNAL AREA: 1546 SQ FT / 143.6 SQ M



While we try our very best, floor plans are produced as a guide only and we take no responsibility for the precise accuracy with which any property is represented.

Talma Road, Brixton, SW2

