

Herne Hill, Herne Hill, SE24

2 bedroom flat - purpose built for sale

£675,000

Leasehold

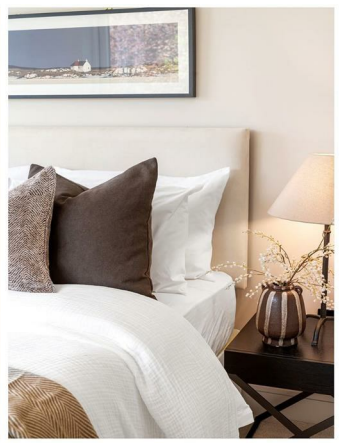
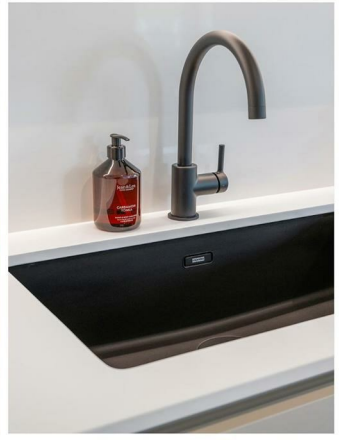
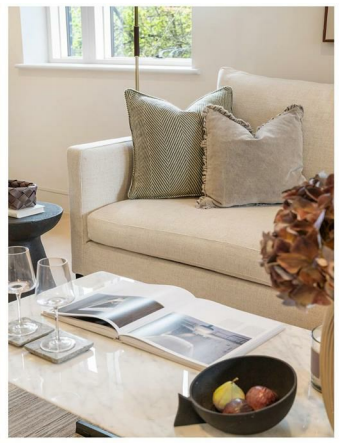
Property Details

An exceptional two double bedroom, two bathroom new build apartment with two private terraces. This first-floor home forms part of Ashwood Gate, a boutique development of nine thoughtfully designed residences combining style, functionality and comfort. Offering over 820 square feet, the apartment features a bright open-plan reception with downlighting, large windows and modern flooring, ideal for relaxing, dining or entertaining. The Italian-designed kitchen includes Bosch appliances, quartz worktops and a Franke Maris tap. Glass doors open onto a private terrace, perfect for al fresco dining. Both bedrooms are generous doubles and the principal benefits from an en-suite and access to a second terrace. Bathrooms are finished with Cifre porcelain tiles and black fittings. Additional features include underfloor heating, air source heat pump, double glazing, smart thermostat, entry system and a 10-year warranty. Ample hallway storage enhances practicality, while thoughtful layout maximises natural light and flow throughout this impressive, energy-efficient contemporary home.

Features

- Two double bedrooms
- Two private terraces
- Two bathrooms
- High-specification new build apartment
- Over 820 square feet
- First floor with lift access
- Herne Hill and Dulwich Village nearby
- North Dulwich and Herne Hill stations
- Chain-free
- 10 year building warranty

Council tax band D EPC rating B (82)



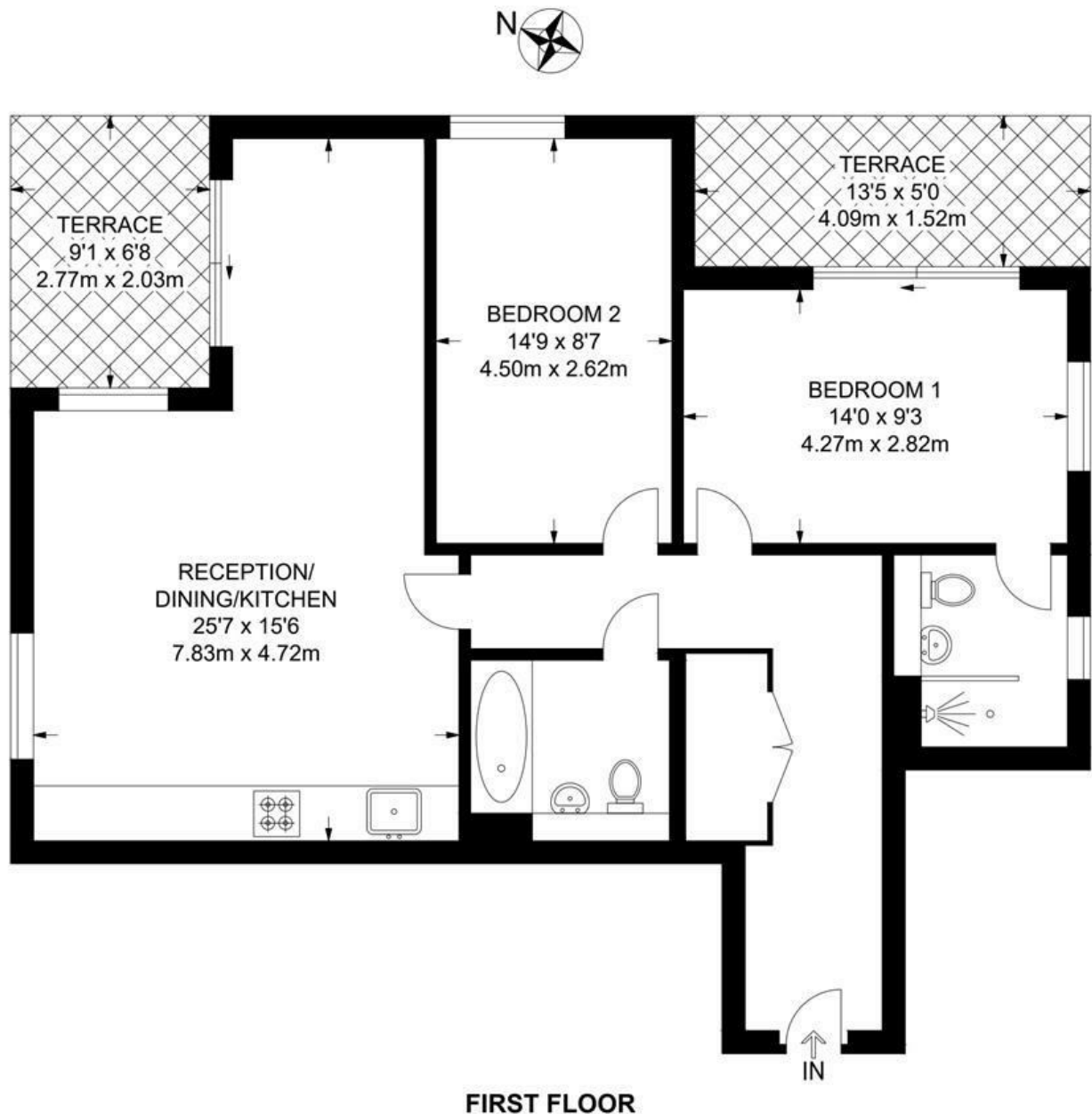


Herne Hill, Herne Hill, SE24

Herne Hill, SE24

2 Bedroom Flat

APPROXIMATE GROSS INTERNAL AREA: 824 SQ FT / 76.5 SQ M



FIRST FLOOR



While we try our very best, floor plans are produced as a guide only and we take no responsibility for the precise accuracy with which any property is represented.

Herne Hill, Herne Hill, SE24

