



Helix Road, Brixton, SW2

2 bedroom flat - conversion for sale

£725,000

Share of Freehold

Property Details

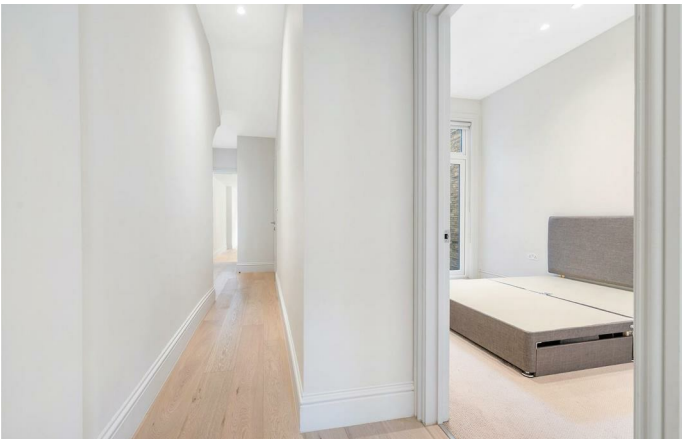
A fantastic, recently renovated two double bedroom, two bathroom garden flat with a demised cellar, set within a charming Victorian property on a quiet, tree-lined residential street. This stunning home has been thoughtfully refurbished throughout, blending period charm with contemporary design. To the rear lies a beautifully designed open-plan kitchen, reception and dining space, flooded with natural light from a large rooflight and full-width glazed doors, creating a seamless connection to the private garden. The sleek, handleless kitchen offers ample storage and integrated appliances in a minimalist matt finish, while the reception area comfortably accommodates both dining and lounging. Bi-folding doors open onto a low-maintenance garden with a paved terrace and raised lawn. The principal bedroom enjoys access to a private courtyard and a stylish en-suite, while the second double bedroom sits to the front with fitted wardrobes and plantation shutters. A modern main bathroom and useful cellar storage complete this turn-key home.

Features

- Two double bedrooms
- Two bathrooms
- Private garden and courtyard
- Recently renovated
- Demised cellar
- Brixton centre around a ten-twelve minute walk
- Heme Hill a fifteen-minute walk
- Victoria Line, Thameslink and trains
- Share of freehold
- Chain-free

Council tax band C EPC rating C (74)

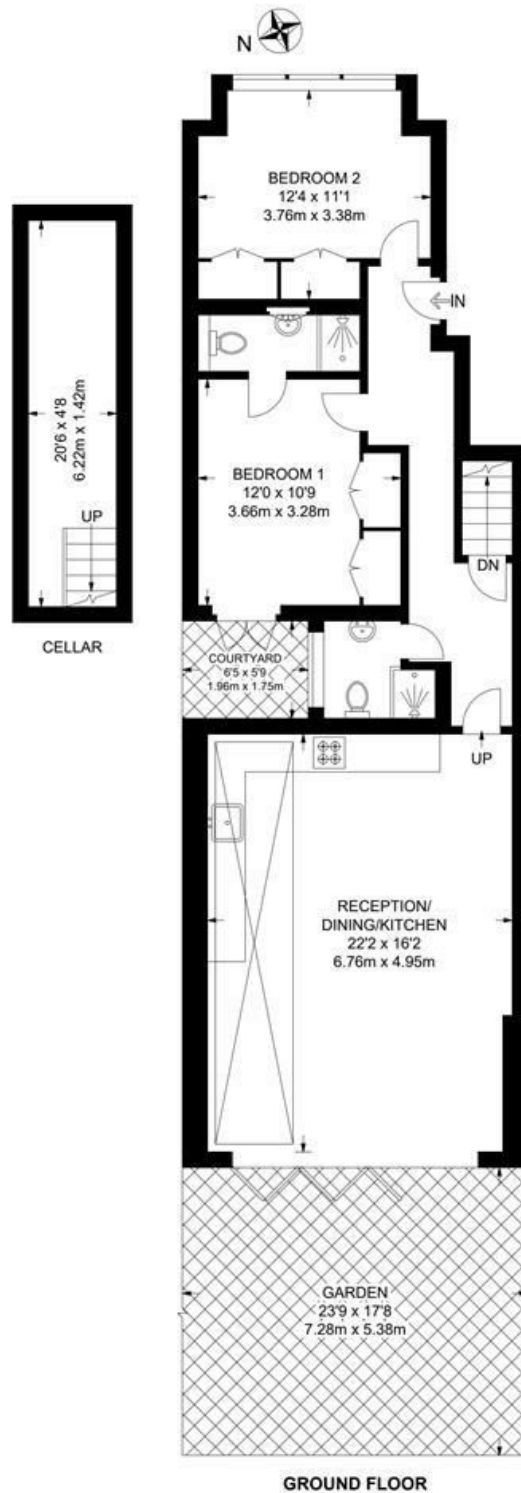




Helix Road, Brixton, SW2

Helix Road, SW2
2 Bedroom Flat

APPROXIMATE GROSS INTERNAL AREA WITH CELLAR: 893 SQ FT / 83 SQ M
 APPROXIMATE GROSS INTERNAL AREA WITHOUT CELLAR: 797 SQ FT / 74 SQ M



While we try our very best, floor plans are produced as a guide only and we take no responsibility for the precise accuracy with which any property is represented.

Helix Road, Brixton, SW2

