

Cubitt Terrace, Clapham, SW4

3 bedroom house for sale

Freehold

Property Details

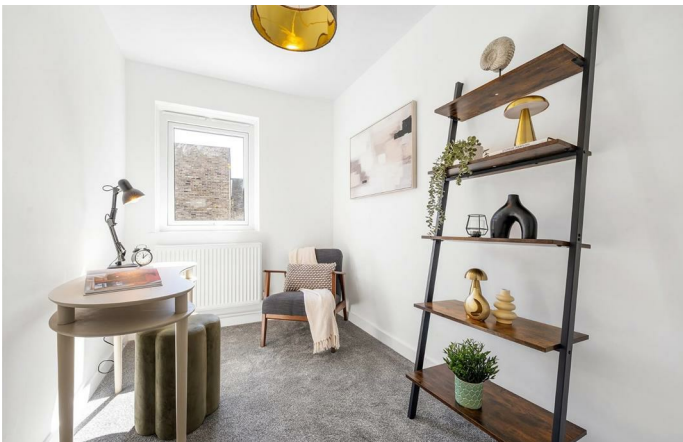
A well-presented three-bedroom refurbished house with a South-East facing garden, set within a quiet residential pocket close to Clapham Old Town and the High Street. Arranged over two floors, the property offers a bright and well-balanced layout, with an open-plan reception room and kitchen spanning the full depth of the home. To the front, the contemporary kitchen features sleek cabinetry, modern worktops and integrated appliances, flowing seamlessly into the dining and living space. To the rear, the reception area is filled with natural light and opens directly onto the private garden, ideal for relaxing or entertaining. There is potential to extend the ground floor, subject to the necessary permissions, as neighbouring properties have done. Upstairs, the principal bedroom is positioned to the rear and comfortably accommodates a double bed, while two further bedrooms provide flexible space for a home office, nursery or guest room. A modern bathroom completes the accommodation.

Features

- Three bedrooms
- South-east facing garden
- Freehold house
- Recently refurbished
- Bright and airy
- Upmarket Clapham Old Town a four-minute walk
- Clapham High street a six-minute stroll
- Clapham Common just eight-minutes away
- Northern Line and Overground

Council tax band E EPC rating C (75)

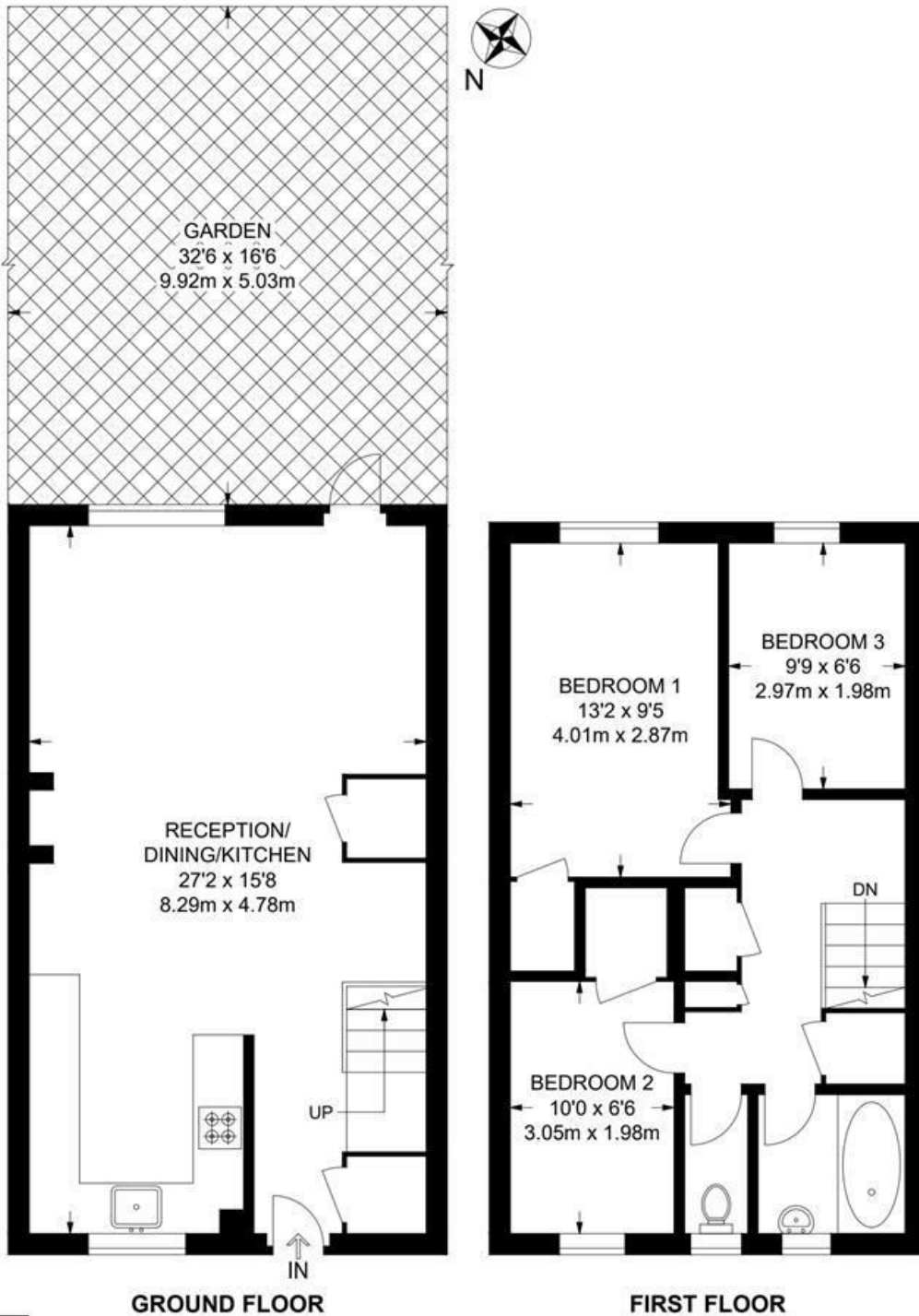




Cubitt Terrace, Clapham, SW4

Cubitt Terrace, SW4
3 Bedroom Flat

APPROXIMATE GROSS INTERNAL AREA: 865 SQ FT / 80.4 SQ M



While we try our very best, floor plans are produced as a guide only and we take no responsibility for the precise accuracy with which any property is represented.

Cubitt Terrace, Clapham, SW4

