



Lyham Road, Brixton, SW2

2 bedroom flat - conversion for sale

£450,000

Leasehold

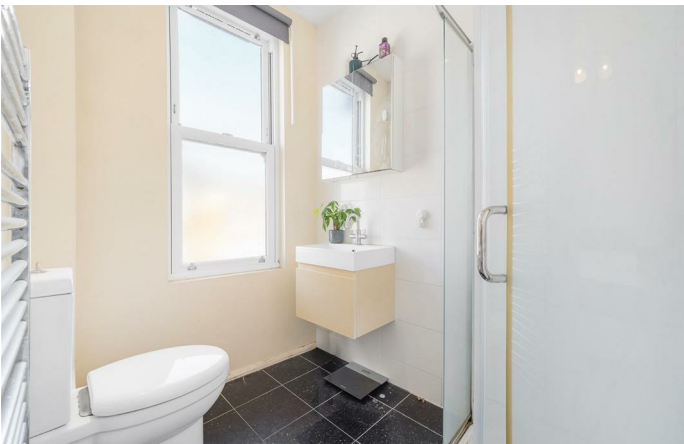
Property Details

An appealing two double bedroom, two bathroom apartment set within an attractive Victorian conversion. A neutral blank canvas throughout, this home offers an exciting opportunity for the incoming purchaser to stamp their own decorative mark. At the heart of the home, the inviting reception room offers generous proportions, comfortably accommodating both lounge and dining areas, ideal for relaxing or entertaining. Leading off, the separate kitchen is well-arranged with sleek cabinetry running along both sides, creating a practical and efficient cooking space. The apartment comprises two well-sized bedrooms, both neutrally presented with high ceilings and cosy carpets. Positioned on opposite sides of the home, they provide excellent privacy. The principal bedroom features an attractive bay window and benefits from a modern en-suite shower room, whilst the second bedroom enjoys leafy rear views and is served by the main bathroom with a bathtub and overhead shower.

Features

- Two bedrooms
- Two bathrooms
- Victorian conversion
- Neutral blank canvas
- Local amenities of Acre Lane
- Clapham and Brixton centres both in under fifteen-minutes
- Abbeville Village and Clapham Common a short stroll away
- Northern and Victoria tube lines
- Chain-free

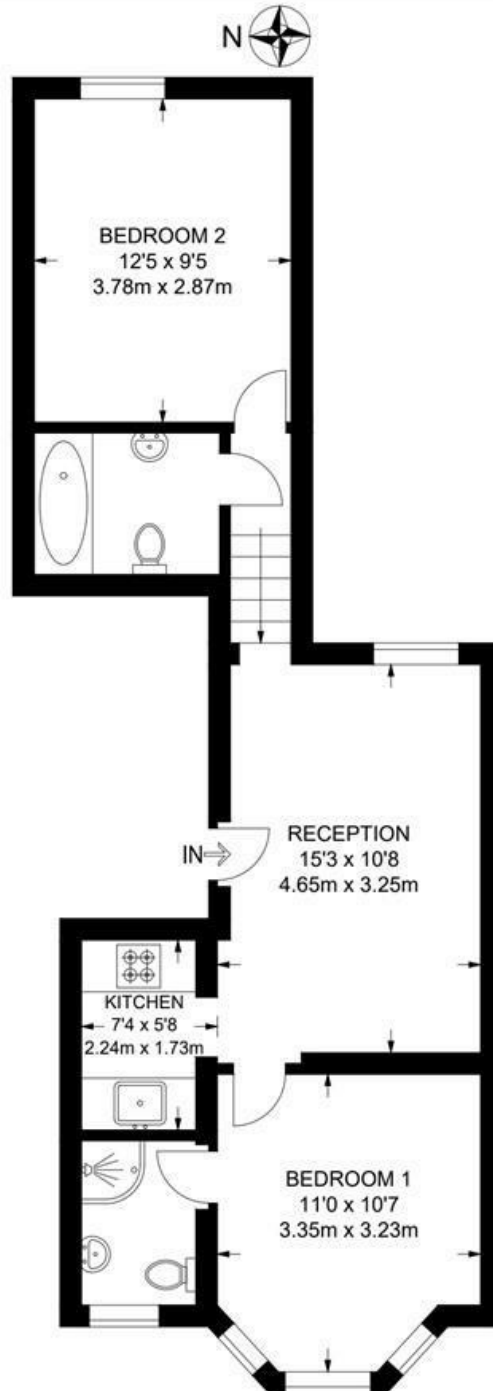
Council tax band D EPC rating C (71)



Lyham Road, Brixton, SW2

Lyham Road, SW2
2 Bedroom Flat

APPROXIMATE GROSS INTERNAL AREA: 564 SQ FT / 52.4 SQ M



FIRST FLOOR



While we try our very best, floor plans are produced as a guide only and we take no responsibility for the precise accuracy with which any property is represented.

Lyham Road, Brixton, SW2

