



George Mews, Brixton, SW9

2 bedroom flat - purpose built for sale

Share of Freehold

Property Details

Bright and airy, this two-bedroom apartment sits on the top floor of a purpose-built building within a gated mews. Tucked away from the bustle, the elevated position ensures privacy and an abundance of natural light throughout. Presented as a neutral blank canvas, the home is ready to be styled to taste, with charming lofted ceilings adding character. To the front, a generous reception room is flooded with light through two sash windows, both enjoying a leafy outlook. Adjacent, a well-appointed kitchen-diner features sleek gloss cabinetry wrapping around to maximise storage, with a dining area set by the second window offering rooftop views. There is potential to open the space into an open-plan reception, subject to permissions. Two bedrooms are thoughtfully separated for privacy, including a generous double and a versatile second room. A centrally located bathroom offers a shower over the bath. Further benefits include parking within the gated mews, operating on a first come, first served basis.

Features

- Two bedrooms
- Gated mews with parking spaces
- Top floor flat
- Bright and airy ambience
- Tucked away off the well-connected Brixton Road
- Shop and park on the doorstep
- Central Brixton a five-minute stroll offering a vast array of amenities
- Victoria Line and Overground
- Share of freehold. Chain-free

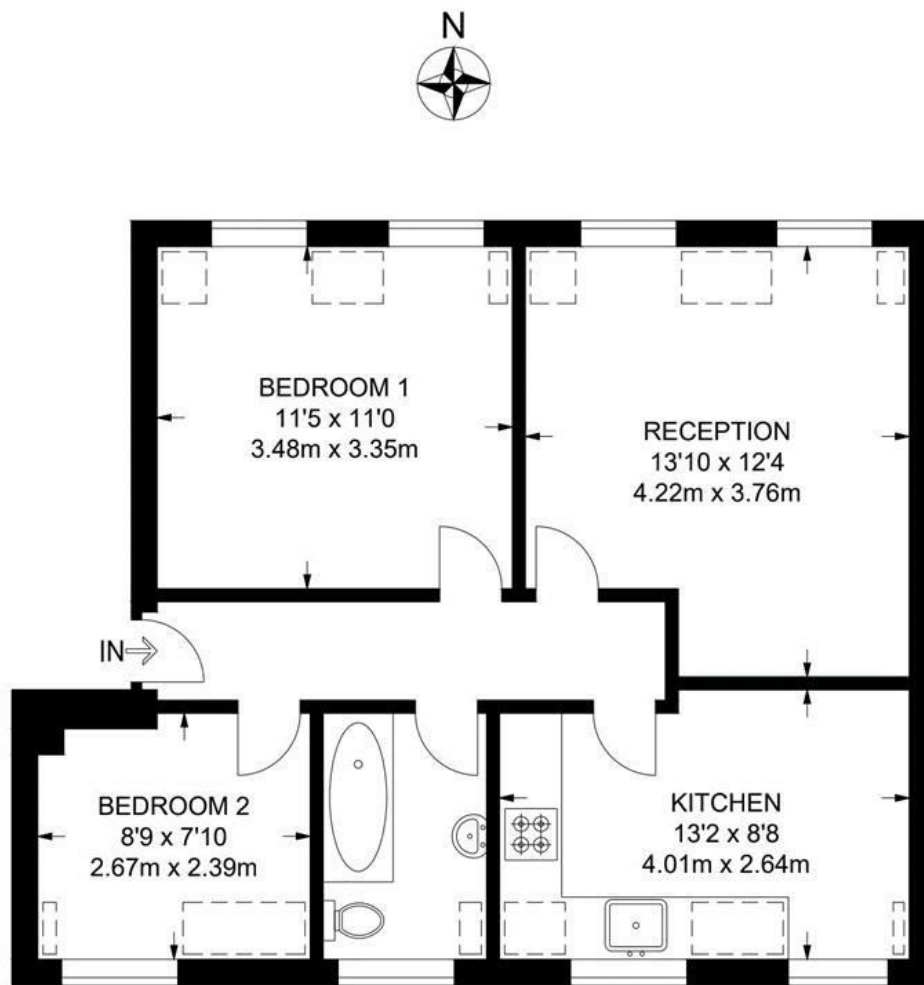
Council tax band C EPC rating C (76)



George Mews, Brixton, SW9

George Mews, SW9
2 Bedroom Flat

APPROXIMATE GROSS INTERNAL AREA: **584 SQ FT / 54.2 SQ M**



SECOND FLOOR



While we try our very best, floor plans are produced as a guide only and we take no responsibility for the precise accuracy with which any property is represented.

George Mews, Brixton, SW9

