

Raleigh Gardens, Brixton, SW2

2 bedroom flat - conversion for sale

£700,000

Leasehold

Property Details

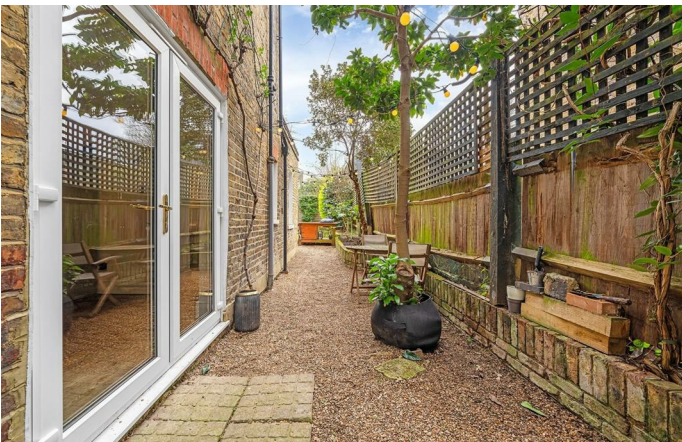
A beautifully presented two double bedroom ground floor apartment with a generous private garden, set within an attractive Victorian property on the quiet, leafy Raleigh Gardens. The garden is a true highlight, offering a mix of patio and lawn bordered by mature greenery, with direct access from both the kitchen and each bedroom. Inside, the property offers a well-balanced layout with excellent natural light throughout. The impressive reception room features particularly high ceilings, a bay window with plantation shutters, and bespoke shelving surrounding a characterful fireplace. To the rear, a separate dine-in kitchen provides ample storage and workspace, with French doors opening out to the garden. The principal bedroom is exceptionally spacious, boasting high ceilings and a decorative fireplace, while the second bedroom enjoys a double aspect with a sash window and garden access. A stylish bathroom, updated in 2021, completes the home.

Features

- Two double bedrooms
- Victorian conversion
- Private garden
- Beautifully presented throughout
- Demised cellar
- Private residential no-through road
- Sought-after street set back quietly off Brixton Hill
- Local amenities on the doorstep
- Short walk to central Brixton and the Tube
- Chain-free

Council tax band D EPC rating E (47)

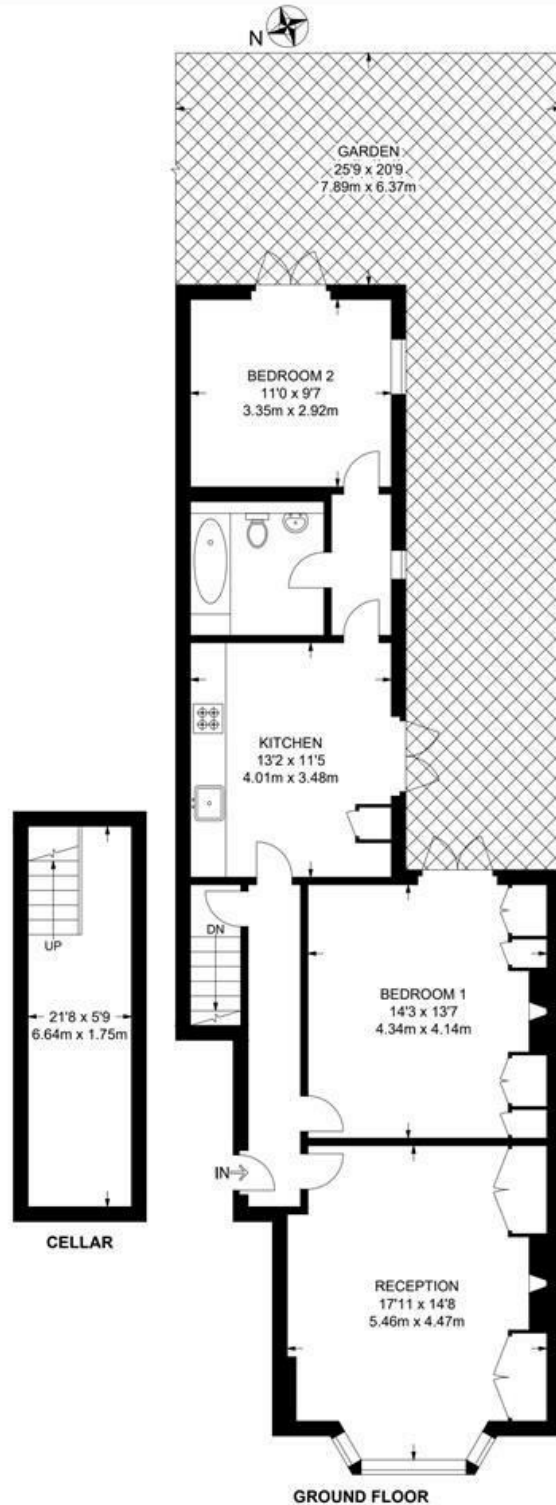




Raleigh Gardens, SW2
2 Bedroom Flat

APPROXIMATE GROSS INTERNAL AREA WITH CELLAR: **1011 SQ FT / 93.9 SQ M**

APPROXIMATE GROSS INTERNAL AREA WITHOUT CELLAR: **886 SQ FT / 82.3 SQ M**



While we try our very best, floor plans are produced as a guide only and we take no responsibility for the precise accuracy with which any property is represented.

Raleigh Gardens, Brixton, SW2

