



Stockwell Road, Brixton, SW9

2 bedroom flat - conversion for sale

£385,000

Leasehold

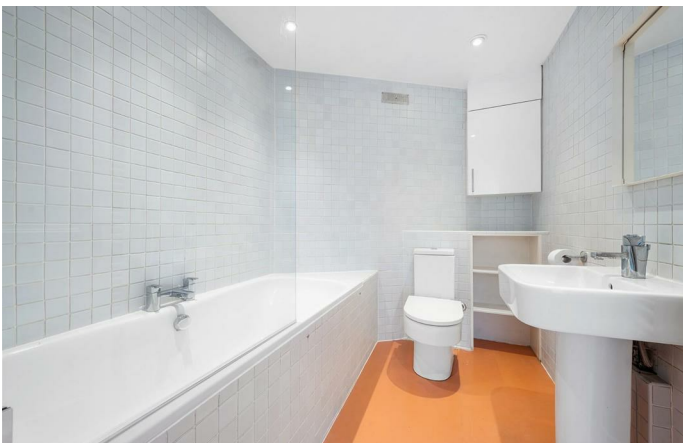
Property Details

A bright and spacious two double bedroom Victorian conversion, positioned on the corner of the well-connected Stockwell Road and the sought-after Stockwell Green. Set on the top floor, the apartment enjoys an airy ambience, enhanced by its elevated position and triple glazing. The generous reception room spans over four metres in each direction, flooded with natural light from a large window and offering ample space for both lounging and dining, ideal for everyday living and entertaining. A separate kitchen has been thoughtfully designed to maximise storage and workspace, featuring wraparound cabinetry, wooden worktops, sleek gloss units and a stylish mosaic splashback in soft neutral tones. The two bedrooms are sensibly arranged at opposite ends of the home, providing excellent privacy. Both are neutrally presented with cosy carpets, generous proportions for wardrobes and large triple-glazed windows promoting a restful night's sleep. A spacious bathroom completes the layout, fitted with a double-ended bathtub and shower overhead, finished in timeless tiling with a contrasting floor. Further benefits include a long lease, recently installed boiler, new radiators, fuse box, flat roof and radio-linked fire alarms.

Council tax band C EPC rating C (69)

Features

- Two double bedrooms
- Victorian conversion
- Triple glazed windows
- Over 700 square feet with a bright and airy ambience
- Neutral blank canvas
- Located in the desirable Stockwell, Brixton, Clapham triangle
- Northern and Victoria lines a six-minute stroll
- Brixton a seven-minute walk
- Clapham High Street a ten-minute amble
- Chain-free

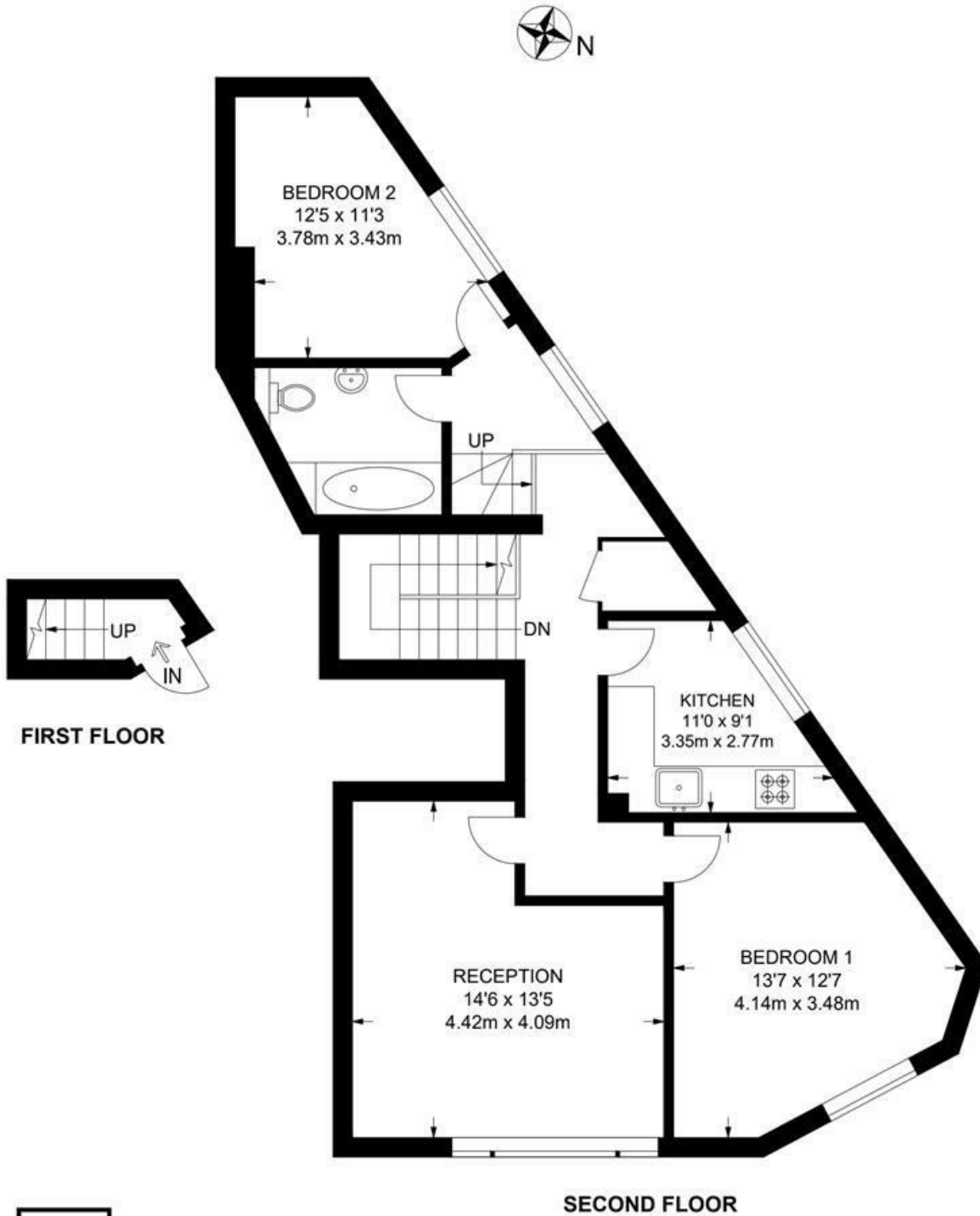




Stockwell Road, Brixton, SW9

Stockwell Road, SW9
2 Bedroom Flat

APPROXIMATE GROSS INTERNAL AREA: 725 SQ FT / 67.3 SQ M



While we try our very best, floor plans are produced as a guide only and we take no responsibility for the precise accuracy with which any property is represented.

Stockwell Road, Brixton, SW9

