

Josephine Avenue, Brixton, SW2

2 bedroom flat for sale

£450,000

Leasehold

Property Details

A well-proportioned two double bedroom ground floor apartment set within a secure gated development on a sought-after residential street, complete with off-street parking accessed via electric gates. Recently redecorated in fresh, neutral tones, the property offers a bright and inviting interior ready to move into. Accessed via secure communal entry, the apartment opens into a welcoming hallway leading to a generous open-plan reception, dining and kitchen space, ideal for both relaxing and entertaining, with ample room for a dining table and comfortable seating area. The kitchen is neatly arranged with good storage and worktop space. Both bedrooms are well-sized doubles, with the principal benefiting from an en suite shower room, while the second is served by a contemporary main bathroom fitted with a bathtub and overhead shower. Further benefits include a designated parking space within the development.

Features

- Two double bedrooms
- Two bathrooms
- Secure, allocated parking space
- Striking contemporary build
- Recently redecorated
- Cafes, gym and eateries on the doorstep
- Brixton Village and tube station within a ten-minute walk
- Herne Hill a pleasant walk through Brockwell Park
- Chain-free

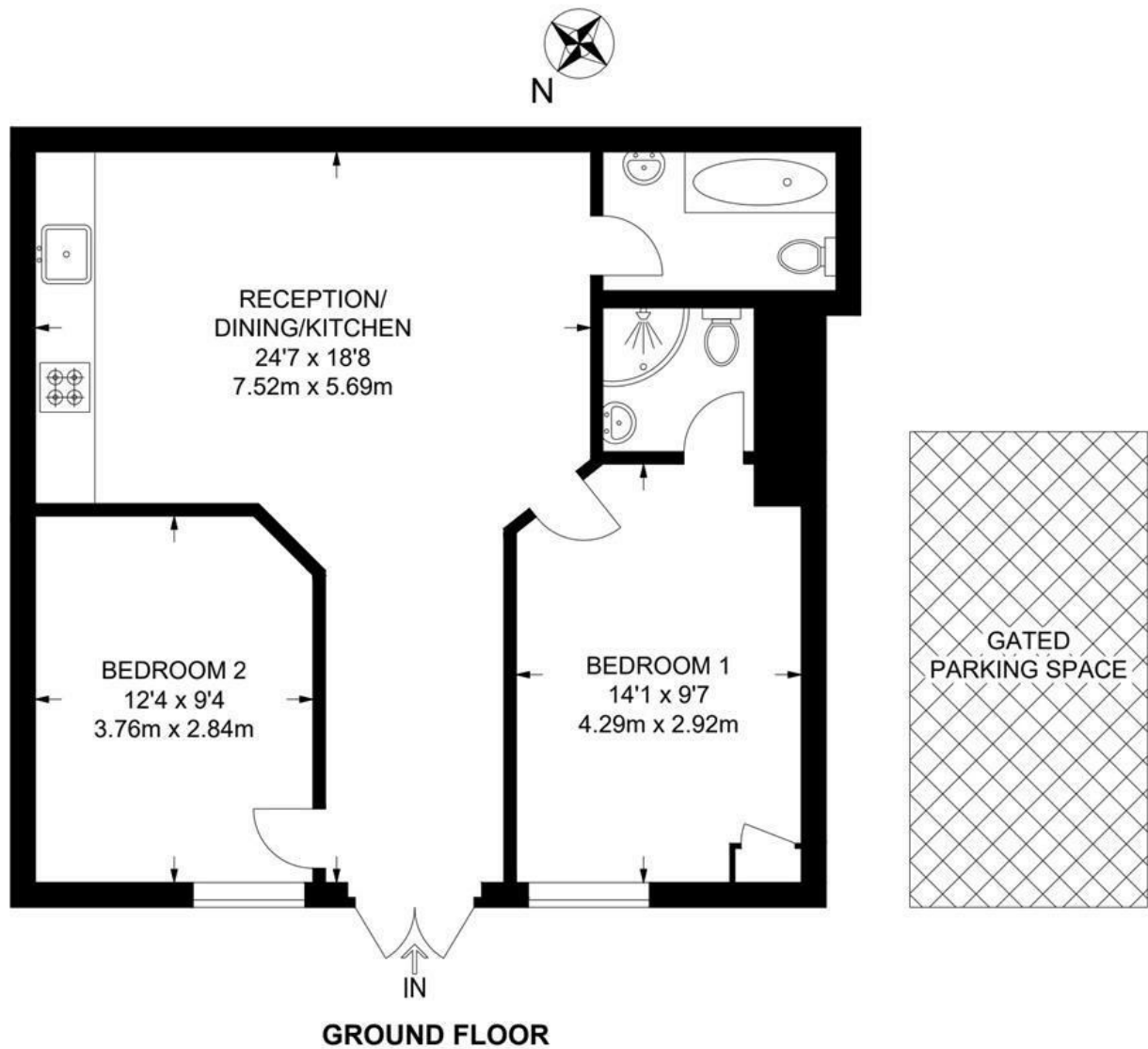
Council tax band B EPC rating C (78)



Josephine Avenue, Brixton, SW2

Josephine Avenue, SW2
2 Bedroom Flat

APPROXIMATE GROSS INTERNAL AREA: **638 SQ FT / 59.3 SQ M**



While we try our very best, floor plans are produced as a guide only and we take no responsibility for the precise accuracy with which any property is represented.

Josephine Avenue, Brixton, SW2

