

**Acre Lane, Brixton, SW2**

2 bedroom flat - conversion for sale

**£475,000**

Leasehold

## Property Details

A beautiful two double bedroom apartment, set over the first floor of an attractive Victorian conversion on ever-popular Acre Lane, with access to a large residents' garden. Set back from the street, the property feels bright and private, elevated above the vibrant buzz below. High ceilings and large windows enhance the airy atmosphere, flooding the home with natural light. To the front, a spacious open plan kitchen reception room forms the heart of the home, featuring a fully integrated modern kitchen with built-in appliances and a washing machine updated in 2022. A charming bay window and thermal blackout curtains add comfort and character. The two double bedrooms are positioned on opposite sides, ideal for privacy. The principal is particularly spacious, while the second is also a genuine double and enjoys peaceful leafy views. A sleek bathroom completes the home, with a bathtub and overhead shower. Renovated during prior ownership, with a modern boiler and 200MB fibre broadband, plus access to a large and rarely used communal garden.

Council tax band C    EPC rating C (76)

## Features

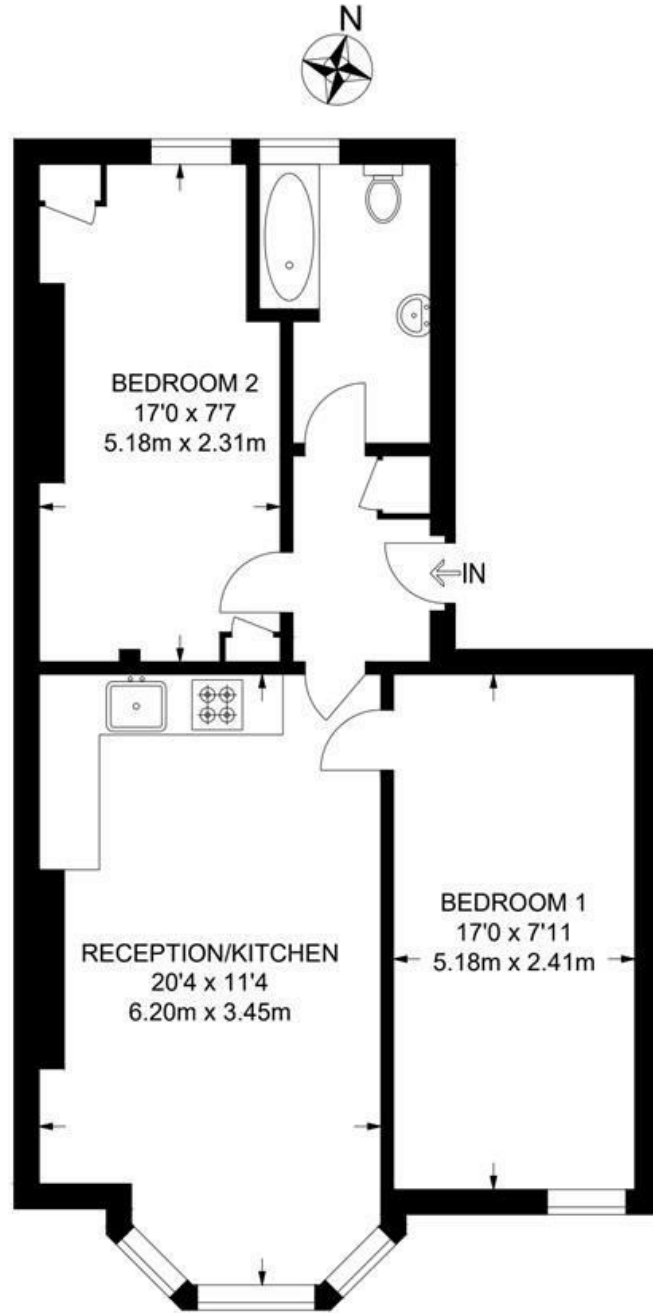
- Two double bedrooms
- Large residents' garden, currently rarely used
- Victorian conversion
- Set back from the conveniently located Acre Lane
- Supermarkets, gym and eateries on the doorstep
- Central Brixton a five-minute stroll
- Clapham High Street a twelve-minute walk
- Victoria and Northern Lines, plus Overground
- Chain free



Acre Lane, Brixton, SW2

**Acre Lane, SW2**  
**2 Bedroom Flat**

APPROXIMATE GROSS INTERNAL AREA: **575 SQ FT / 53 SQ M**



**FIRST FLOOR**



While we try our very best, floor plans are produced as a guide only and we take no responsibility for the precise accuracy with which any property is represented.

Acre Lane, Brixton, SW2

