



Loughborough Park, SW9

1 bedroom flat to let

£455 Per Week

Unfurnished

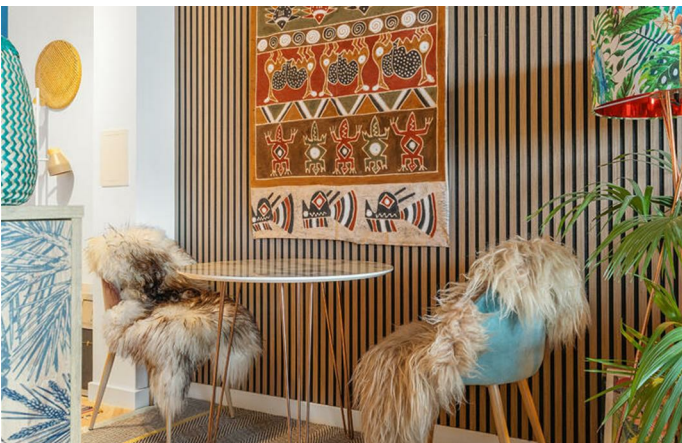
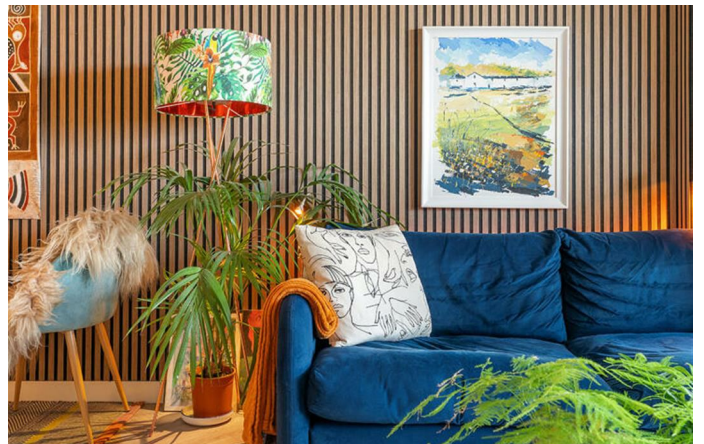
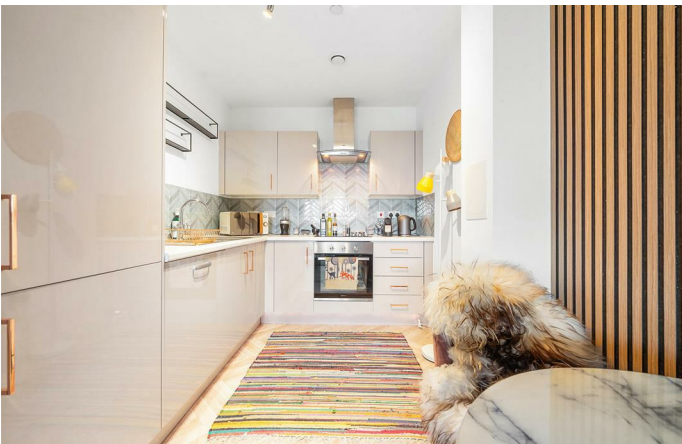
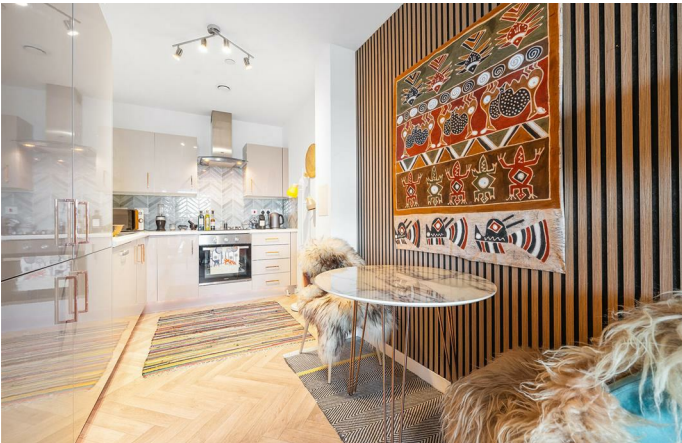
Property Details

A stunning one double bedroom apartment on the seventh floor located within the newly developed Loughborough Park Estate. The apartment features exquisite interior design décor throughout, complimenting the aesthetics and layout of the property. Facing London, the seventh floor balcony looks out & over an incredible East facing vista for idyllic, sunny morning coffees to start the day. The open plan aspect is perfect for entertaining with a fully equipped, chef designed kitchen to show off those gastronomic skills! The bedroom benefits from ample, built in wardrobes as well as tons of space and the same fantastic London City views. We highly recommend a viewing to fully appreciate all this apartment has to offer.

Features

- Stunning Views
- New Build Apartment
- Designer decor
- Balcony

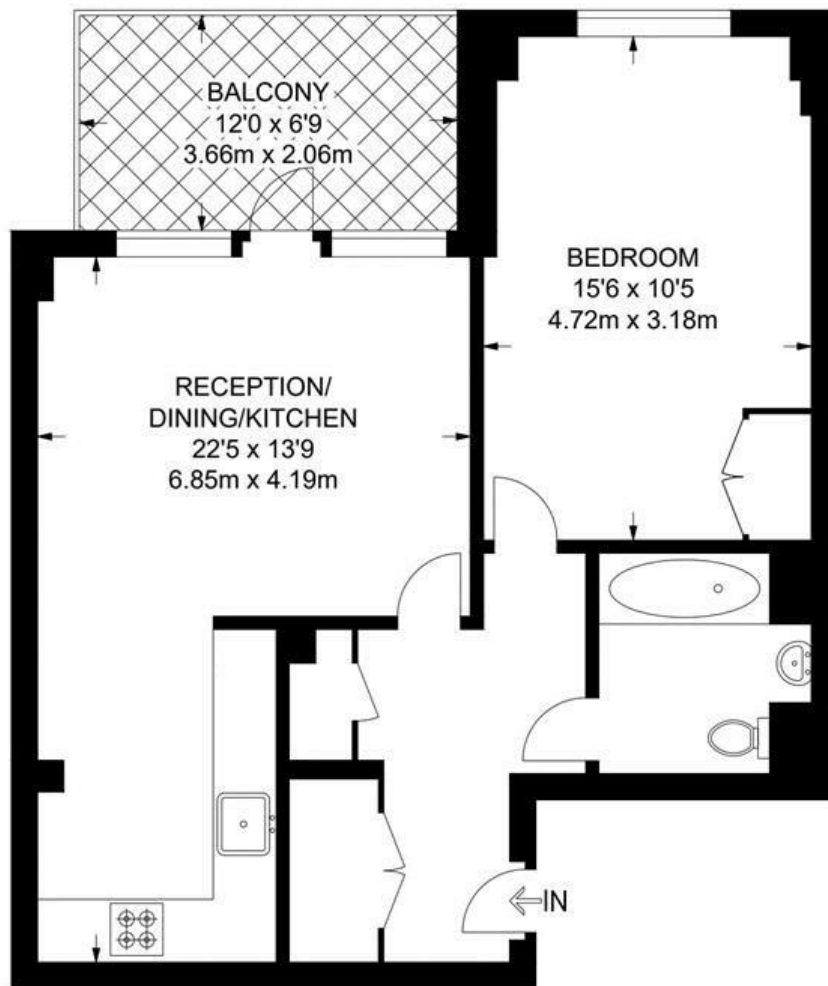
Council tax band C EPC rating B (84)



Loughborough Park, SW9

Loughborough Park, SW9 1 Bedroom Flat

APPROXIMATE GROSS INTERNAL AREA: **564 SQ FT / 52.4 SQ M**



SEVENTH FLOOR



While we try our very best, floor plans are produced as a guide only and we take no responsibility for the precise accuracy with which any property is represented.

Loughborough Park, SW9

