



Marlborough Mews, Brixton, SW2

3 bedroom house for sale

£925,000

Freehold

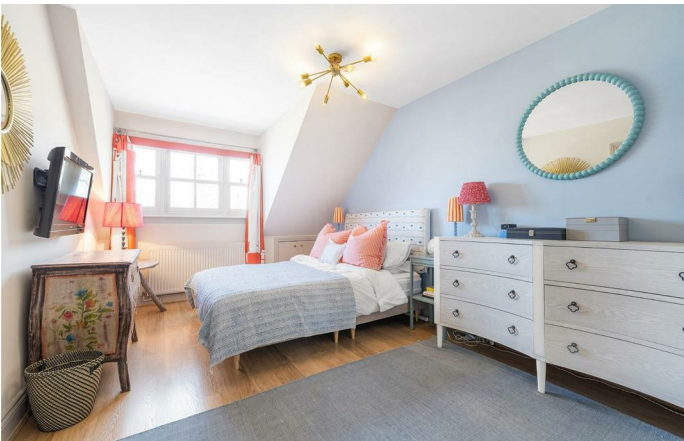
Property Details

This beautifully presented three bedroom, three bathroom mews house features a South-East facing garden and allocated off-street parking, set within the secure, double-gated Marlborough Mews – a peaceful, community-focused enclave. The home blends modern design with comfortable living. The ground floor offers a spacious open-plan layout, flowing from a sleek, fully integrated kitchen diner with ample worktop space into a bright reception room with glazed doors opening onto the garden. A contemporary shower room completes this level. The garden is a tranquil, low-maintenance retreat with decking and artificial lawn, ideal for relaxing or entertaining. Upstairs, three well-proportioned bedrooms provide flexibility. The top-floor principal suite includes a walk-in wardrobe and en-suite bathroom. The second bedroom also benefits from fitted storage and an en-suite, while the third works well as an office, nursery or guest room, serviced by the ground floor bathroom. Finished in a cohesive, modern style throughout, this home also benefits from a private parking space directly outside.

Features

- Three bedrooms
- Three bathrooms
- South-East facing garden
- Allocated off-street parking
- Double-gated mews with a neighbourly vibe
- Brixton a five-minute stroll
- Clapham a fifteen-minute walk
- Victoria and Northern lines, plus Overground
- Freehold
- Chain-free

Council tax band F EPC rating B (81)





Marlborough Mews, Brixton, SW2

Marlborough Mews, SW2
3 Bedroom House

APPROXIMATE GROSS INTERNAL AREA: 1081 SQ FT / 100.4 SQ M



While we try our very best, floor plans are produced as a guide only and we take no responsibility for the precise accuracy with which any property is represented.

Marlborough Mews, Brixton, SW2

