



Milton Road, Herne Hill, SE24

2 bedroom flat - conversion for sale

£535,000

Share of Freehold

Property Details

An appealing two bedroom flat with a private roof terrace, set on the first floor of an attractive Victorian conversion. This neutral home offers a blank canvas, ready for personal touches. The reception room is bright and inviting, featuring double sash windows that flood the space with natural light and provide ample room to relax, dine, and entertain. To the rear, a separate kitchen maximises storage and worktop space, opening onto a fantastic roof terrace—perfect for al-fresco dining. With leafy neighbourhood views, this low-maintenance outdoor space is ideal for summer enjoyment. A central utility room keeps laundry discreetly tucked away while adding extra storage, alongside a hallway cupboard. The two bedrooms are thoughtfully separated for added privacy, ideal for sharers or rental potential. Both are neutrally presented and well-proportioned, with differing carpets to those shown in the photos. The bathroom completes the home, featuring a bathtub with overhead shower.

Features

- Two bedrooms
- Victorian conversion
- Private roof terrace
- Sought-after Poet's Corner location
- Highly desirable street
- Brockwell Park and Lido at the end of the road
- Herne Hill and Brixton both within easy reach
- Excellent transport links
- Share of freehold
- Chain-free

Council tax band C EPC rating D (66)



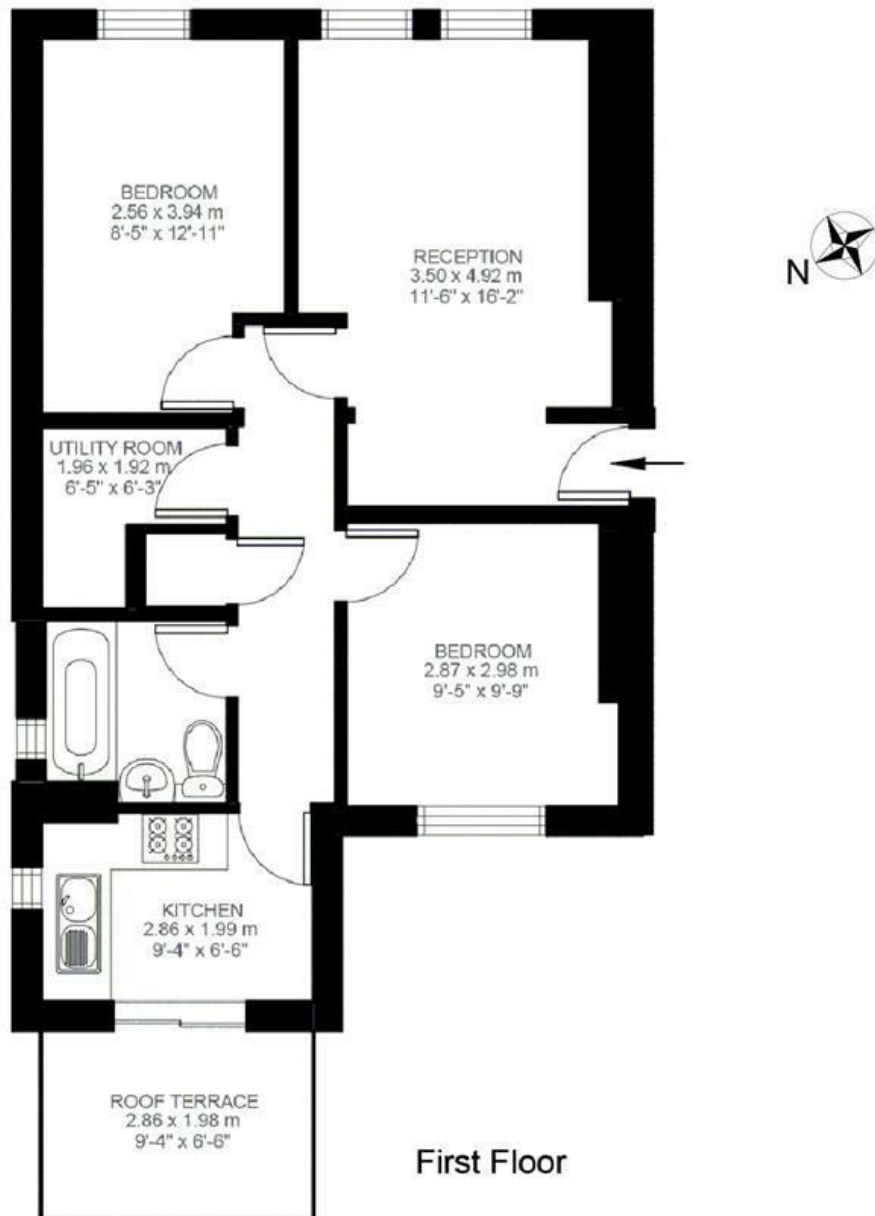


Milton Road, Herne Hill, SE24

Milton Road, SE24

2 Bedroom Flat

APPROXIMATE GROSS INTERNAL AREA: **588 SQ FT / 55 SQ M**



While we try our very best, floor plans are produced as a guide only and we take no responsibility for the precise accuracy with which any property is represented.

Milton Road, Herne Hill, SE24

