



Dalberg Road, Brixton, SW2

2 bedroom flat for sale

£600,000

Leasehold

Property Details

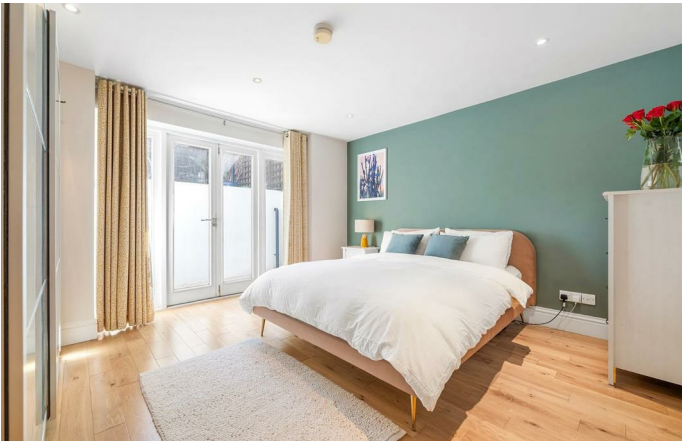
A beautifully presented two double bedroom garden flat arranged over two floors within a handsome Victorian property on the highly sought-after Dalberg Road. Ideally positioned between Brixton and Herne Hill and moments from the open green spaces of Brockwell Park, this charming home offers stylish interiors, generous proportions and excellent outdoor space. The heart of the home is a bright and spacious open-plan reception and kitchen, thoughtfully designed with shaker-style cabinetry, integrated appliances, sleek worktops and ample space to dine, entertain and relax. Large sash windows flood the room with natural light, enhancing the warm and welcoming atmosphere throughout. The second double bedroom overlooks the garden and offers flexibility as a guest room, nursery or home office. Downstairs, the impressive principal bedroom opens directly onto a private terrace, while a stylish family bathroom and substantial media room provide excellent additional living and entertaining space. The generous private garden is perfect for al fresco dining and relaxing, completing this spacious split-level home with a wonderful house-like feel.

Council tax band B EPC rating C (78)

Features

- Two double bedrooms
- Private garden and private terrace
- Victorian conversion
- Over 1,000 square feet of internal living space
- Arranged over two floors with a house-like feel
- Sought after location in the LTN
- Moments from Brockwell Park
- Nestled a short stroll to both Brixton and Herne Hill centres
- Start of the Victoria line in Brixton, with alternative central London rail access from Herne Hill
- Chain-free

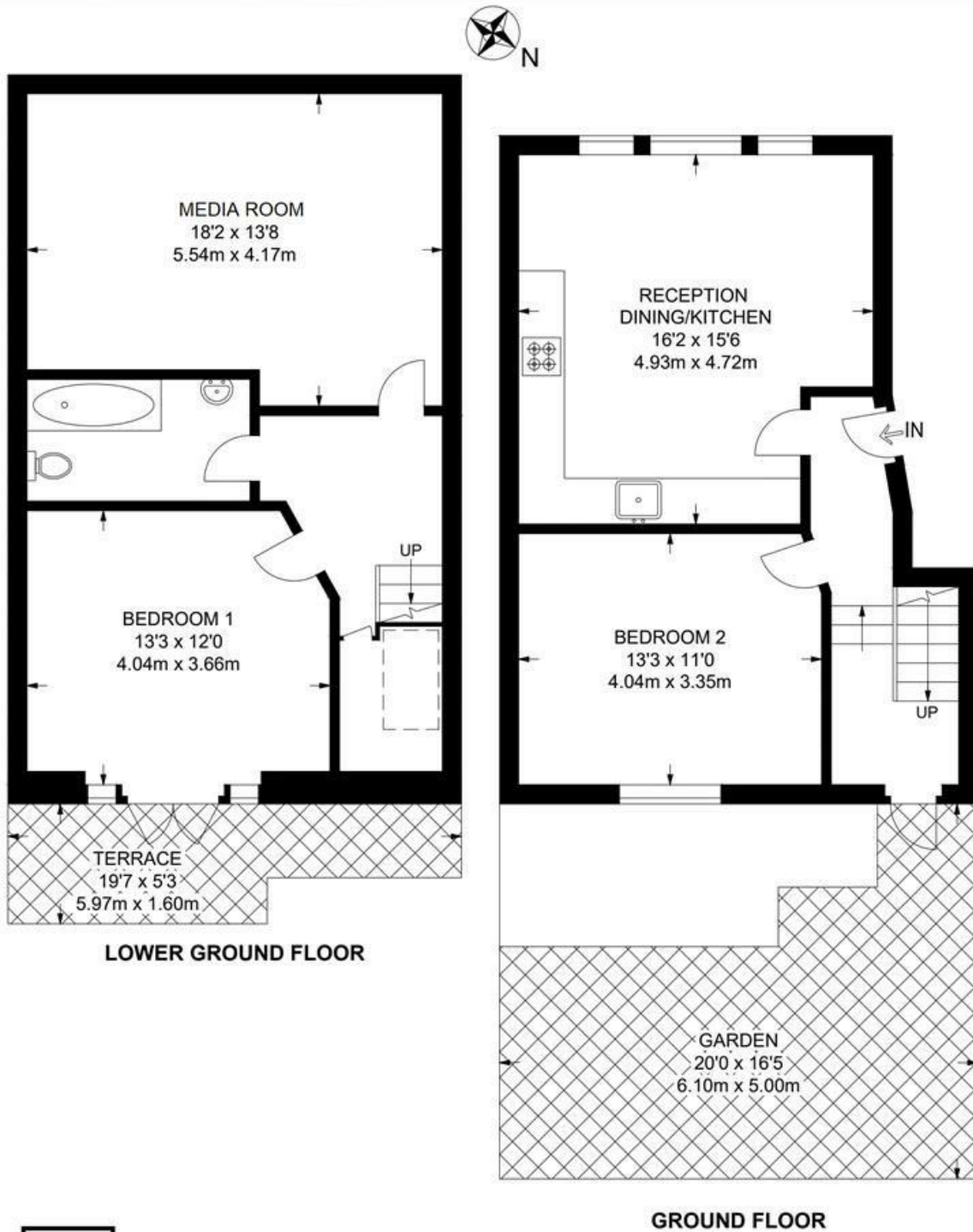




Dalberg Road, Brixton, SW2

Dalberg Road, SW2
2 Bedroom Flat

APPROXIMATE GROSS INTERNAL AREA: 1016 SQ FT / 94.4 SQ M



While we try our very best, floor plans are produced as a guide only and we take no responsibility for the precise accuracy with which any property is represented.

Dalberg Road, Brixton, SW2

