



Fawnbrake Avenue, Herne Hill, SE24

2 bedroom flat - conversion for sale

£550,000

Share of Freehold

Property Details

A charming two double bedroom first floor apartment, set within a handsome period building on ever-popular Fawnbrake Avenue. With its elegant red front door framed by a white archway, this bright and airy home has been lovingly maintained by the same owner for over fifteen years. At the heart of the property, the generous reception room features bamboo flooring, leafy views and built-in storage flanking the chimney breast, with a hand-painted cherry tree mural adding individuality. The separate kitchen is both practical and sociable, with glossy cabinetry, plentiful worktop space and a fitted breakfast bar, currently complemented by vibrant décor which can be easily painted to personal taste. The principal bedroom is tranquil and spacious, with high ceilings, a bay window seat and fitted wardrobes, while the second bedroom also has fitted wardrobes and is versatile, currently a guest room and home office. A stylish bathroom completes the interior. Maintained communal areas and numerous upgrades, including soundproofing, modern electrics and a Vaillant boiler, ensure this beautiful home is both characterful and practical.

Features

- Two bedrooms
- Victorian conversion
- Share of freehold. Chain-free Benefitting from Declaration of Trust between freeholders
- Soundproofing and fitted storage
- Same owner for over fifteen years
- Highly desirable avenue
- Central Herne Hill a six-minute stroll
- Train station a seven-minute walk
- Brockwell Park nearby

Council tax band C EPC rating C (75)

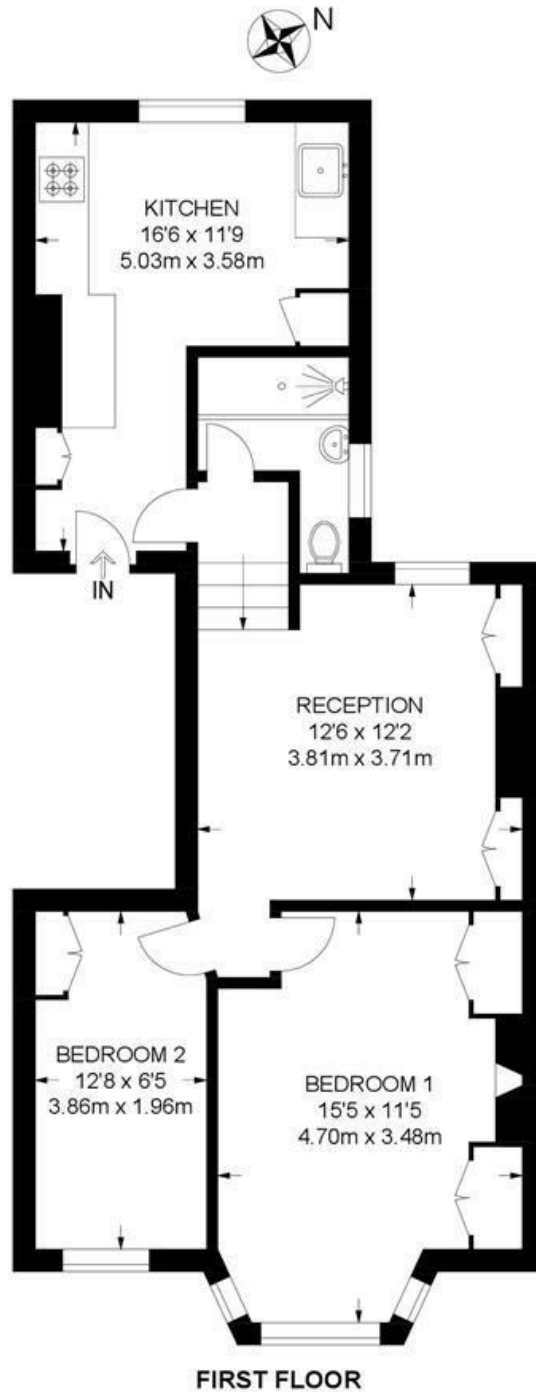


Fawnbrake Avenue, Herne Hill, SE24

Fawnbrake Avenue, SE24

2 Bedroom Flat

APPROXIMATE GROSS INTERNAL AREA: **597 SQ FT / 55.5 SQ M**



While we try our very best, floor plans are produced as a guide only and we take no responsibility for the precise accuracy with which any property is represented.

Fawnbrake Avenue, Herne Hill, SE24

