

**Morrish Road, Brixton, SW2**

3 bedroom flat - purpose built for sale

£525,000

Leasehold

Property Details

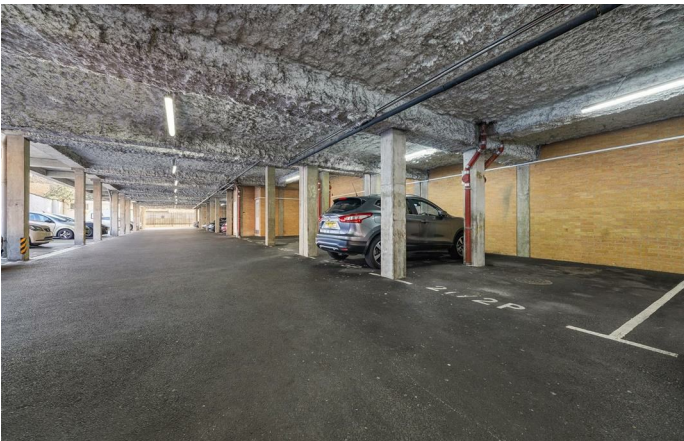
A beautifully spacious three double bedroom, two bathroom apartment with a full-width private terrace and secure gated off-street parking, set within a modern building on Morrish Road, just off Brixton Hill. This desirable residential street enjoys a book club, traditional pub and large supermarket moments away. Offering over 1,000 square feet, the apartment combines generous proportions with contemporary design and a sociable layout. The impressive open-plan reception spans nearly nine metres, with floor-to-ceiling glass doors opening onto a terrace stretching almost twelve metres across the width of the home, seamlessly extending the living space. The sleek horseshoe kitchen integrates appliances within stylish cabinetry, complemented by a peninsula breakfast bar and a well-positioned dining area. Warming modern flooring runs throughout. All three bedrooms are comfortable doubles with plush carpeting, offering versatility for guests, working from home or rental potential. The principal features built-in wardrobes and a chic en-suite, while a stylish family bathroom and excellent hallway storage complete this superb home.

Council tax band E **EPC rating D (65)**

Features

- Three double bedrooms
- Two bathrooms
- Full-width private terrace
- Gated off-street parking
- Modern building
- Over 1,000 square feet
- Neighbourly road with street party and book club
- Proximity to Brixton, Streatham Hill and Balham
- Brixton a fifteen-minute walk or five-minute bus
- Streatham Hill an eight-minute walk

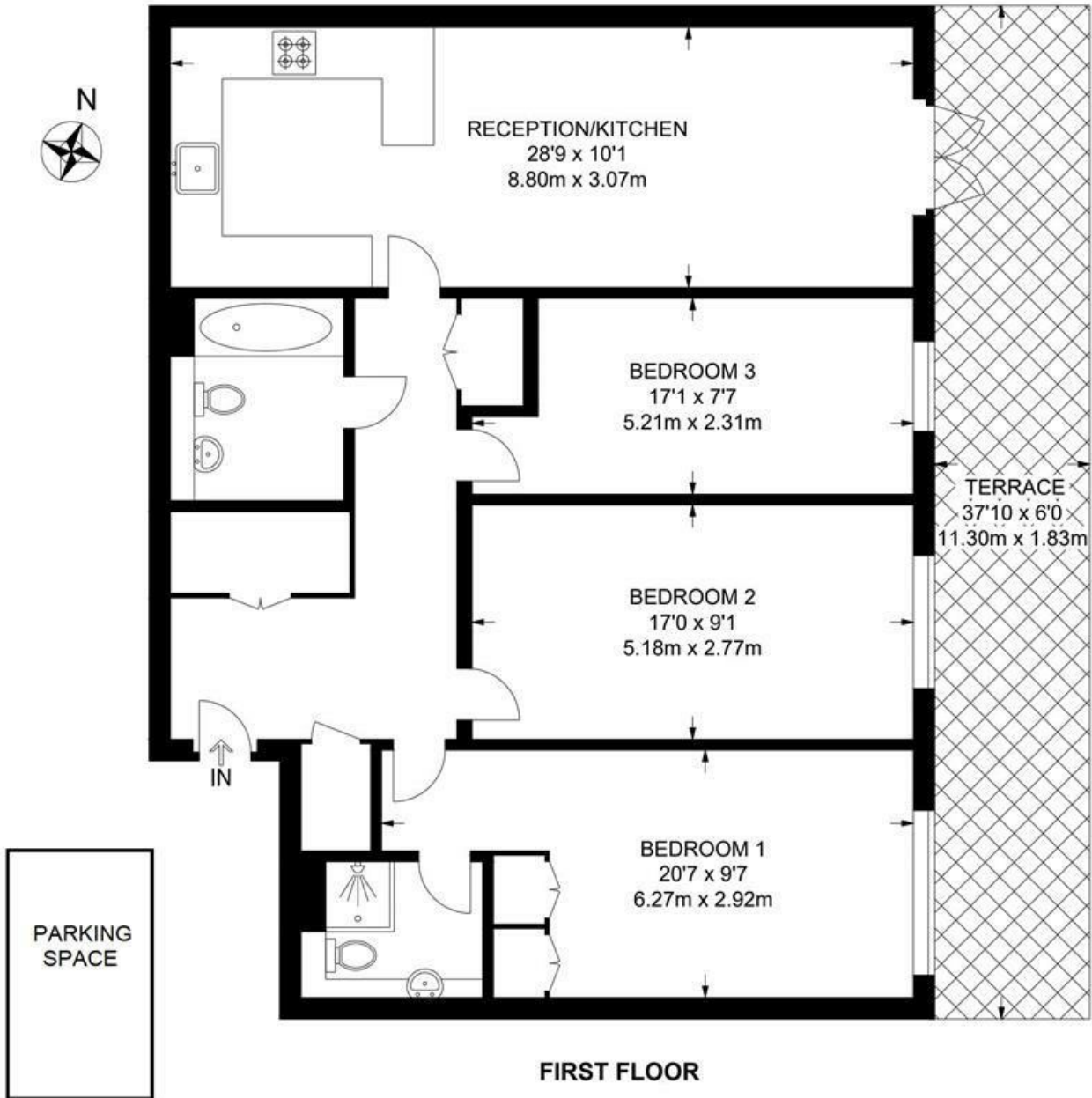




Morrish Road, Brixton, SW2

Morrish Road, SW2
3 Bedroom Flat

APPROXIMATE GROSS INTERNAL AREA: **1030 SQ FT / 95.7 SQ M**



While we try our very best, floor plans are produced as a guide only and we take no responsibility for the precise accuracy with which any property is represented.

Morrish Road, Brixton, SW2

