



**Clapham Common South Side, SW4**

3 bedroom flat - conversion to let

**£830 Per Week**

Part furnished

## Property Details

A well presented three double bedroom, split level apartment located in prime position in Clapham Common. The apartment is located under a minute to Clapham Common underground right in heart of the area with an array of coffee shops, boutique salons, shops, pubs and restaurants all right on your doorstep. This a location you cannot beat if you are looking to immerse yourself in the Clapham Common lifestyle!

With three large double bedrooms, two bathrooms and and separate WC the flat offers ample amenities. As well the usual accommodations there is also a cute roof terrace and separate utility room for laundry & additional storage.

**Council tax band D**      **EPC rating (null)**

## Features

- Cute Terrace
- Modern, spacious kitchen
- Open plan living
- Unbeatable location
- Excellent travel links



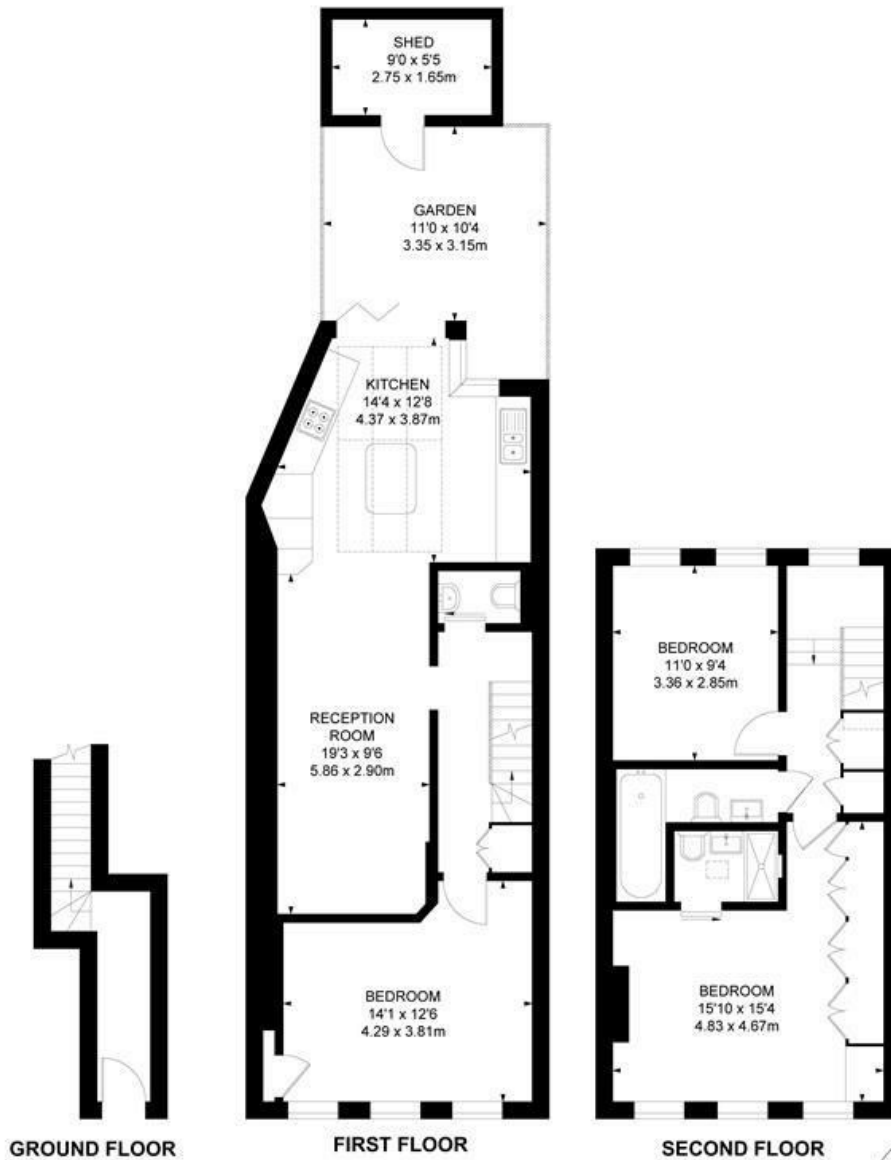
Clapham Common South Side, SW4

**Clapham Common Southside, SW4  
3 Bedroom Flat**

APPROXIMATE GROSS INTERNAL AREA :  
(INCLUDING SHED)  
SHED AREA :

1180 SQ FT / 109.59 SQ M

49 SQ FT / 4.53 SQ M



While we try our very best, floor plans are produced as a guide only and we take no responsibility for the precise accuracy with which any property is represented.



Clapham Common South Side, SW4

