



Loughborough Road, Brixton, SW9

1 bedroom flat for sale

£375,000

Leasehold

Property Details

A beautifully presented one double bedroom top floor flat with gated off-street parking, set within an attractive Victorian house. Offering an excellent balance of character, natural light and modern finishes, this chain-free property is ideal for first-time buyers, investors or a well-connected London pied-à-terre. The current owner has thoughtfully improved the property with new double glazed windows, real oak flooring throughout and a refitted kitchen complete with new worktops, sink, hob, oven and extractor during the time of ownership. The bright reception room offers ample space to relax and dine, with charming views across neighbouring Victorian terraces and towards the iconic Loughborough Hotel opposite. The separate kitchen is stylish and practical, while the generous double bedroom enjoys leafy rear views, fitted wardrobes and space for a desk or dressing table. A contemporary bathroom includes a bathtub with overhead shower. Further benefits include secure bike storage and access to a boarded loft offering excellent storage and future extension potential, STNP.

Council tax band B EPC rating C (70)

Features

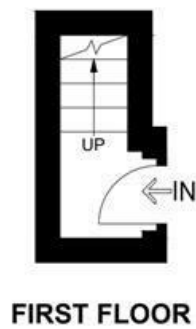
- One double bedroom
- Victorian conversion
- Off-street allocated parking
- Bright and airy throughout
- Generous storage with access to the loft
- Local cafe opposite, with further choices at the top of the road
- Brixton a ten-minute stroll
- Oval a fifteen-minute walk
- Victoria and Northern Lines, Overground and trains
- Chain free



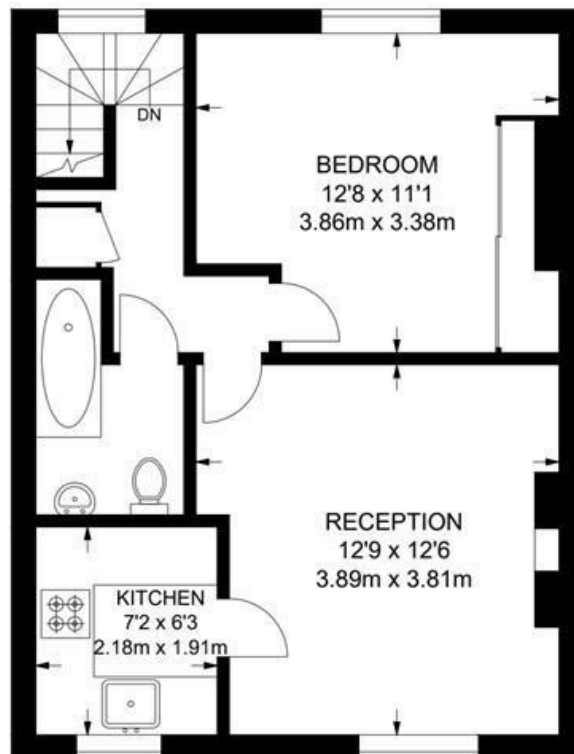
Loughborough Road, Brixton, SW9

Loughborough Road, SW9
1 Bedroom Flat

APPROXIMATE GROSS INTERNAL AREA: 475 SQ FT / 44.1 SQ M



FIRST FLOOR



SECOND FLOOR



While we try our very best, floor plans are produced as a guide only and we take no responsibility for the precise accuracy with which any property is represented.

Loughborough Road, Brixton, SW9

