



**Bonham Road, Brixton, SW2**

2 bedroom flat - conversion for sale

**£599,950**

Leasehold

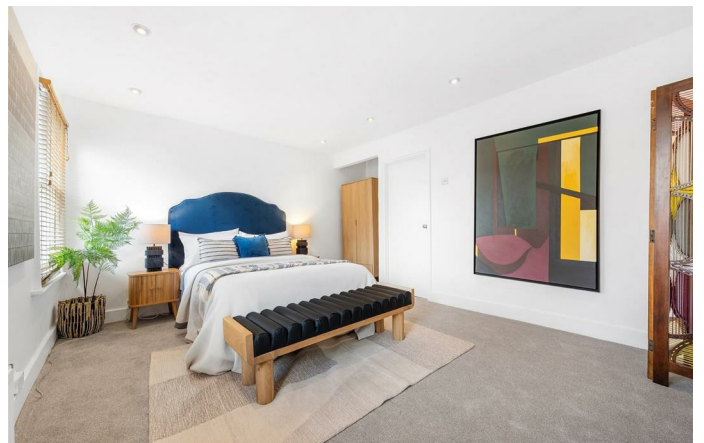
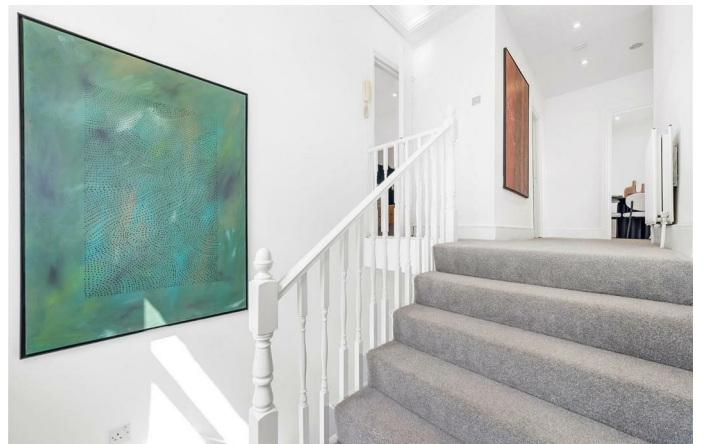
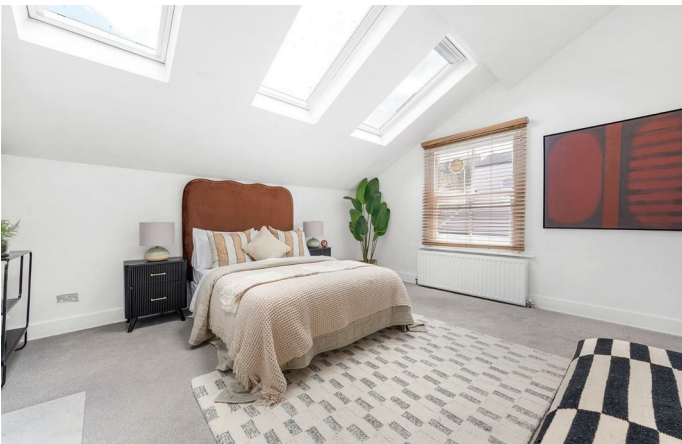
## Property Details

A spacious split-level two double bedroom top floor flat with a private garden, set within an attractive double-fronted Victorian conversion. Positioned behind mature hedges and approached via a tiled pathway, the property enjoys a welcoming setting. Spanning approximately 977 sqft, the flat offers bright, airy interiors throughout. A winding stairwell leads into the home, opening onto a generous reception room with cosy carpeting, modern downlighting and leafy views. Adjacent, the separate dine-in kitchen features shaker-style cabinetry, ample worktop space and a striking dark tiled splashback. The bedrooms are separated for privacy. The principal bedroom is particularly bright, enhanced by dual-aspect windows and skylights, with plenty of space for wardrobes. The second double bedroom sits peacefully to the rear with sash windows and a useful storage nook. Further benefits include a spacious contemporary bathroom and a private section of garden with new fencing and lawn, accessed via a secure side gate.

Council tax band D    EPC rating E (54)

## Features

- Two double bedrooms
- Private garden
- Victorian double-fronted conversion
- Almost 1,000 square feet
- Bright and airy throughout
- Desirable residential street between Brixton and Clapham
- Catchment for Corpus Christi and Sudbourne schools
- Brockwell Park nearby
- Victoria and Northern tube lines
- Chain-free

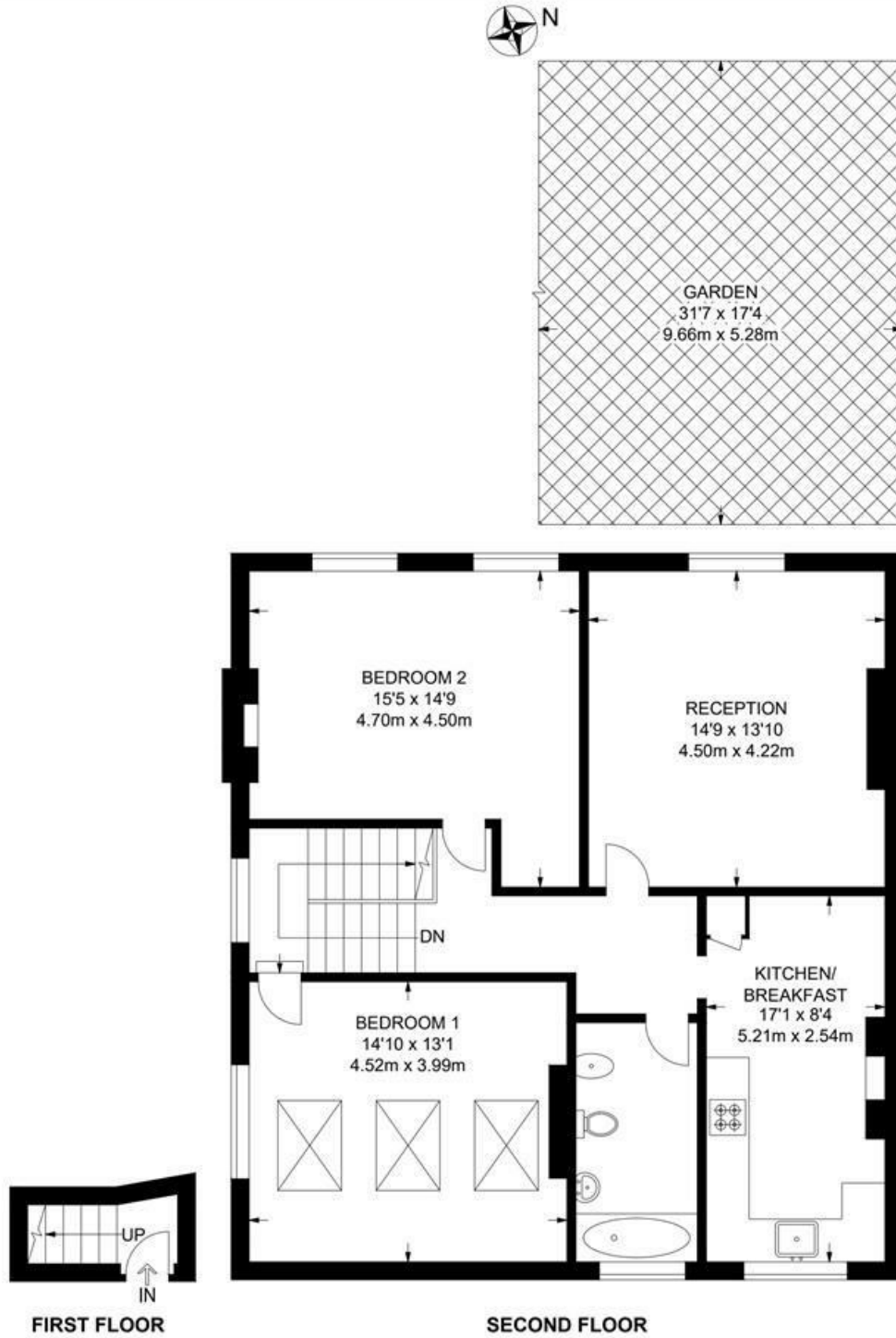




Bonham Road, Brixton, SW2

**Bonham Road, SW2**  
**2 Bedroom Flat**

APPROXIMATE GROSS INTERNAL AREA: 977 SQ FT / 90.8 SQ M



While we try our very best, floor plans are produced as a guide only and we take no responsibility for the precise accuracy with which any property is represented.

Bonham Road, Brixton, SW2

