



Wingford Road, Brixton, SW2

£499,950

2 bedroom flat - purpose built for sale

Property Details

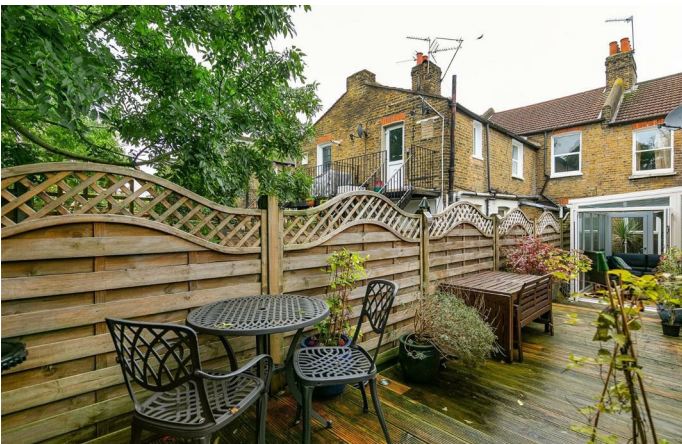
A two double bedroom purpose-built Victorian garden flat in a lovely residential road sandwiched between Brixton and Clapham. This period property has its own front door and comprises two comfortable double bedrooms, a fantastic kitchen diner which flows seamlessly through to a wonderfully bright reception area in the glass-built conservatory, a modern bathroom and a private East facing garden. The flat is a short walk from both Clapham and Brixton and all that these two in-demand areas have to offer. Brockwell Park is within close proximity and a wide selection of local transport links which include Brixton tube and rail station (a fifteen-minute walk), three tube stations in Clapham (Northern Line), Herne Hill station (British Rail) and numerous bus links which take you down the hill to Brixton tube within a few minutes and then through and onto Central London. Leasehold plus freehold to the entire building.

Council tax band C

EPC rating (null)

Features

- Two double bedrooms
- Purpose-Built Victorian flat
- Own front door
- Good dimensions
- Private garden
- Recently redecorated
- Chain-free
- Leasehold plus freehold to the entire building





Wingford Road, Brixton, SW2

K

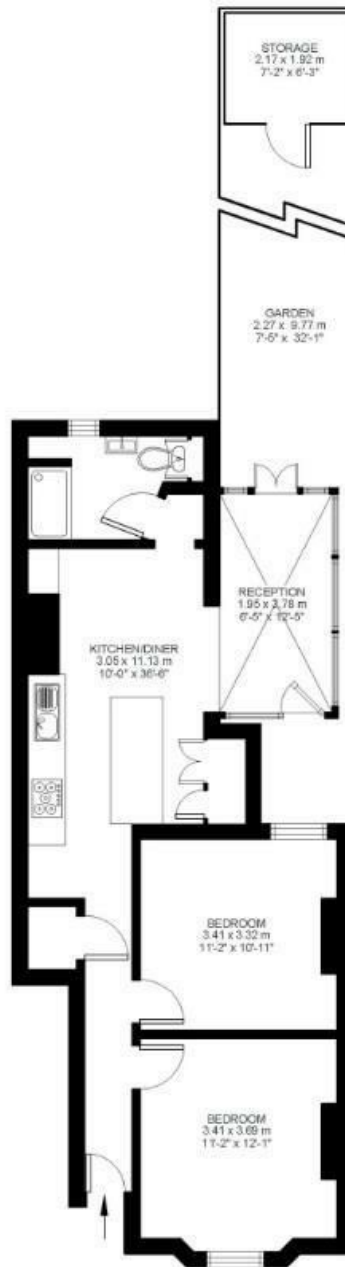
2 Bed flat

Approx internal area:

686 sqft 64 sqm

While we do try our very best, floor plans are produced as a guide only and we take no responsibility for the precise accuracy with which any property is represented

Wingford Road



Ground Floor



Wingford Road, Brixton, SW2

