



Acre Lane, Brixton, SW2

4 bedroom flat - conversion for sale

£600,000

Share of Freehold

Property Details

A bright and spacious four double bedroom, two-bathroom split-level flat set across the upper floors of an elegant semi-detached Victorian conversion on Acre Lane, with access to an exceptional South-facing residents' garden measuring approximately 200 feet in length. Extending to over 1,150 sq ft, this impressive home offers a wonderful sense of space and privacy throughout. Arranged over two generous levels, the split-level layout creates a clear separation between the social living areas and the bedrooms, making it ideal for families, professionals working from home, or sharers. All four double bedrooms are thoughtfully positioned separately from one another for added comfort and flexibility. The airy reception room is complemented by a spacious kitchen-diner with extensive wrap-around cabinetry and ample room for entertaining. Two bathrooms are arranged across both floors, including a family bathroom with bathtub and overhead shower, plus a separate shower room. Residents also enjoy access to a shared studio in the garden.

Features

- Four double bedrooms
- Two bathrooms
- Predominantly South-facing 200ft residents' garden and studio
- Semi-detached period conversion
- Over 1,150 square feet
- Beautifully bright and airy
- Central Brixton a five-minute stroll
- Victoria and Northern Lines
- Share of freehold
- Chain-free

Council tax band D EPC rating D (68)





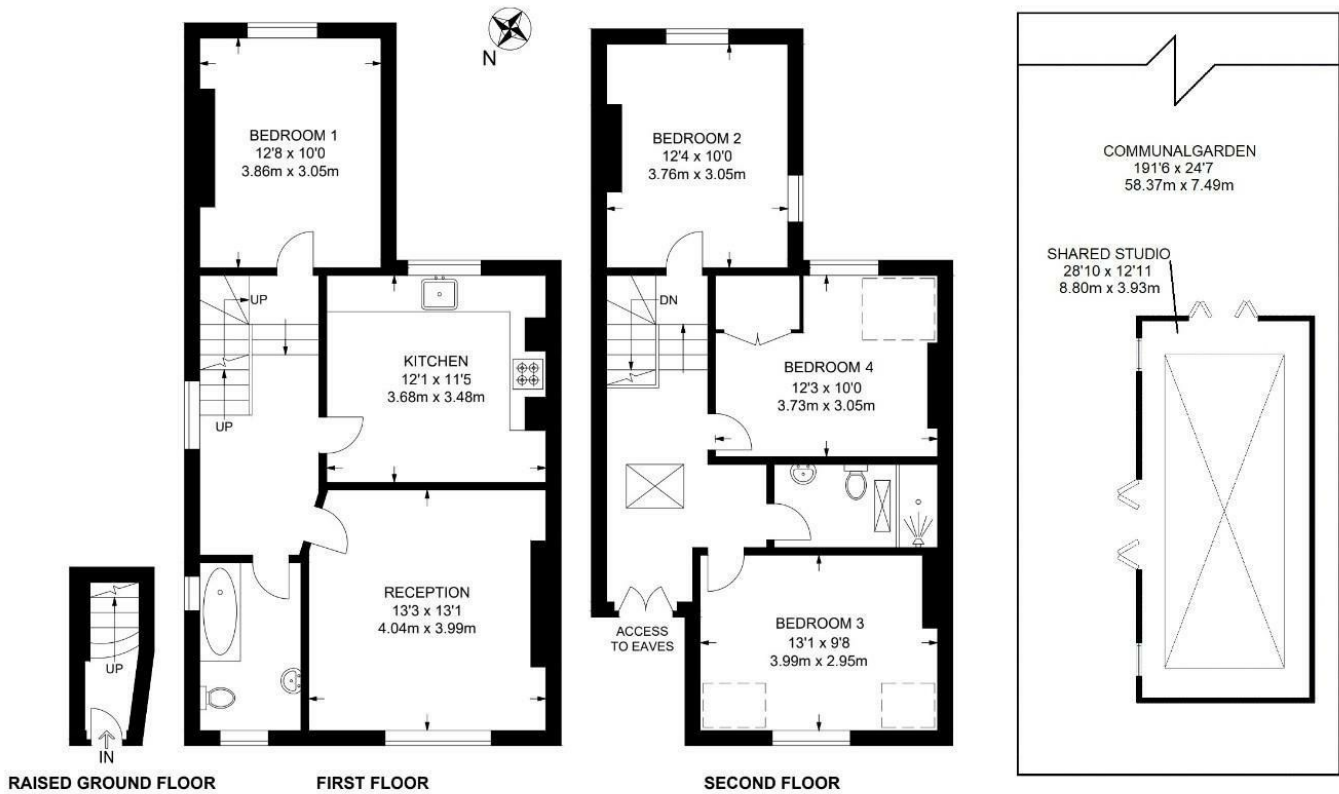
Acre Lane, Brixton, SW2

Acre Lane, SW2

4 Bedroom Flat

APPROXIMATE GROSS INTERNAL AREA: **1182 SQ FT / 109.8 SQ M**

APPROXIMATE SHARED STUDIO: **372 SQ FT / 35 SQ M**



While we try our very best, floor plans are produced as a guide only and we take no responsibility for the precise accuracy with which any property is represented.

Acre Lane, Brixton, SW2

