

**Morrish Road, Brixton, SW2**

2 bedroom flat - conversion to let

**£553 Per Week**

Part furnished

## Property Details

Nestled in the vibrant area of Brixton, Morrish Road presents a splendid opportunity to acquire a fully refurbished flat conversion that epitomises modern living. This stylish property boasts two bedrooms, the master bedroom being a spacious double, with the second bedroom offering versatility as an ideal study, office, or spare room, catering to the needs of contemporary lifestyles.

To the front of the apartment, one is greeted by an open-plan layout that seamlessly integrates the kitchen, living and dining spaces, creating an inviting atmosphere perfect for both relaxation and entertaining. The flat is adorned with high-spec fixtures and fittings throughout, ensuring a sophisticated finish that meets the demands of modern life.

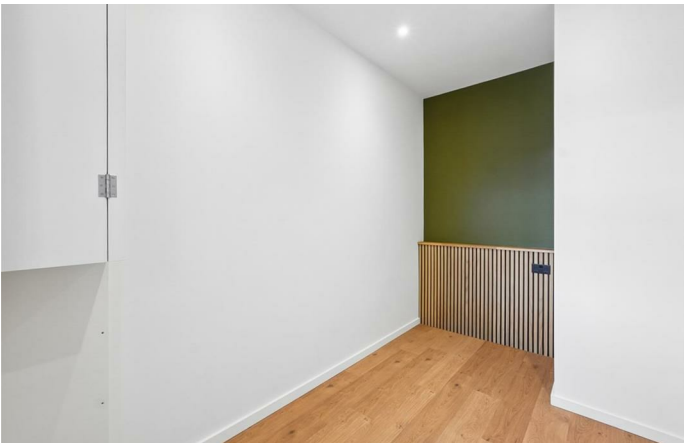
The property features a well-appointed bathroom, designed with both comfort and functionality in mind. Every corner of this flat has been thoughtfully considered, making it a delightful retreat in the heart of London.

In summary, this exceptional flat on Morrish Road is a rare find, ideal for those seeking a modern, stylish living space in one of London's most sought-after areas. Do not miss the chance to make this remarkable property your new home.

## Features

- Fully refurbished throughout
- Quiet location in LTN
- Open plan living
- Excellent energy rating
- Thoughtfully designed functionality

Council tax band New Build      EPC rating B (84)



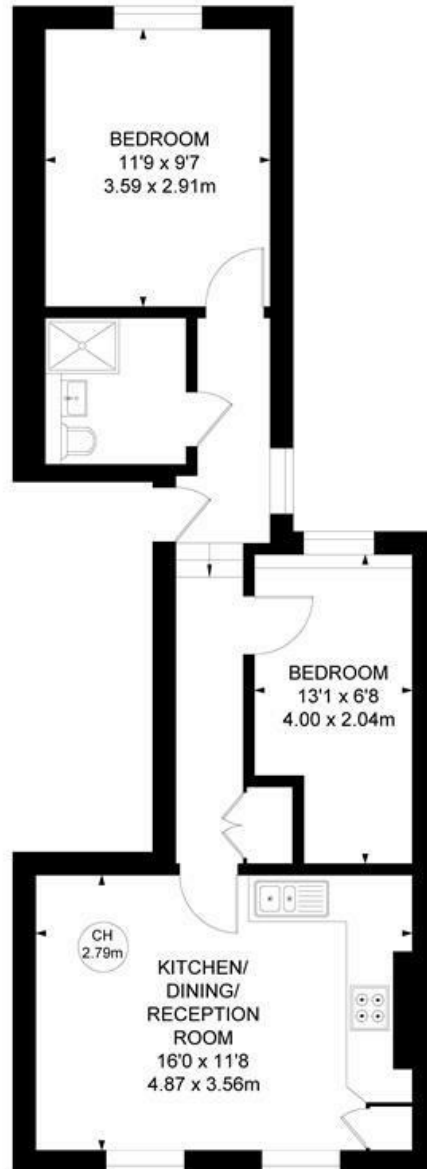
Morrish Road, Brixton, SW2

**Morrish Road, SW2**

**2 Bedroom Flat**

APPROXIMATE GROSS INTERNAL AREA :

**515 SQ FT / 47.83 SQ M**



**FIRST FLOOR**



While we try our very best, floor plans are produced as a guide only and we take no responsibility for the precise accuracy with which any property is represented.

Morrish Road, Brixton, SW2

