

Stockwell Park Road, SW9

2 bedroom flat - purpose built to let

£553 Per Week

Furnished

Property Details

In addition to paying rent for the property, you may also be required to make the following permitted payments.

Before the tenancy starts:

Holding deposit - 1 week's rent, and/or Deposit - 5 weeks' rent, or where the rent is more than £50,000 per annum, 6 weeks' rent.

During the tenancy:

Payments to other third parties, such as council tax, utilities or payments for communications services.
Default charges, such as payments for the replacement of lost keys or interest on overdue rent.
Tenancy transaction charges, such as requests to vary or assign the tenancy.

Tenant Protection: Keating Estates is a member of UKALA Client Money Protect, which is a client money protection scheme, and also a member of UKALA PRS, which is a redress scheme. You can find out more details on the Renting page our website or by contacting us directly.

Council tax band B **EPC rating C (73)**

Features

- Underground parking available (additional to rent)
- Private roof terrace
- Modern, bright and contemporary
- Two spacious double bedrooms
- Semi open plan kitchen



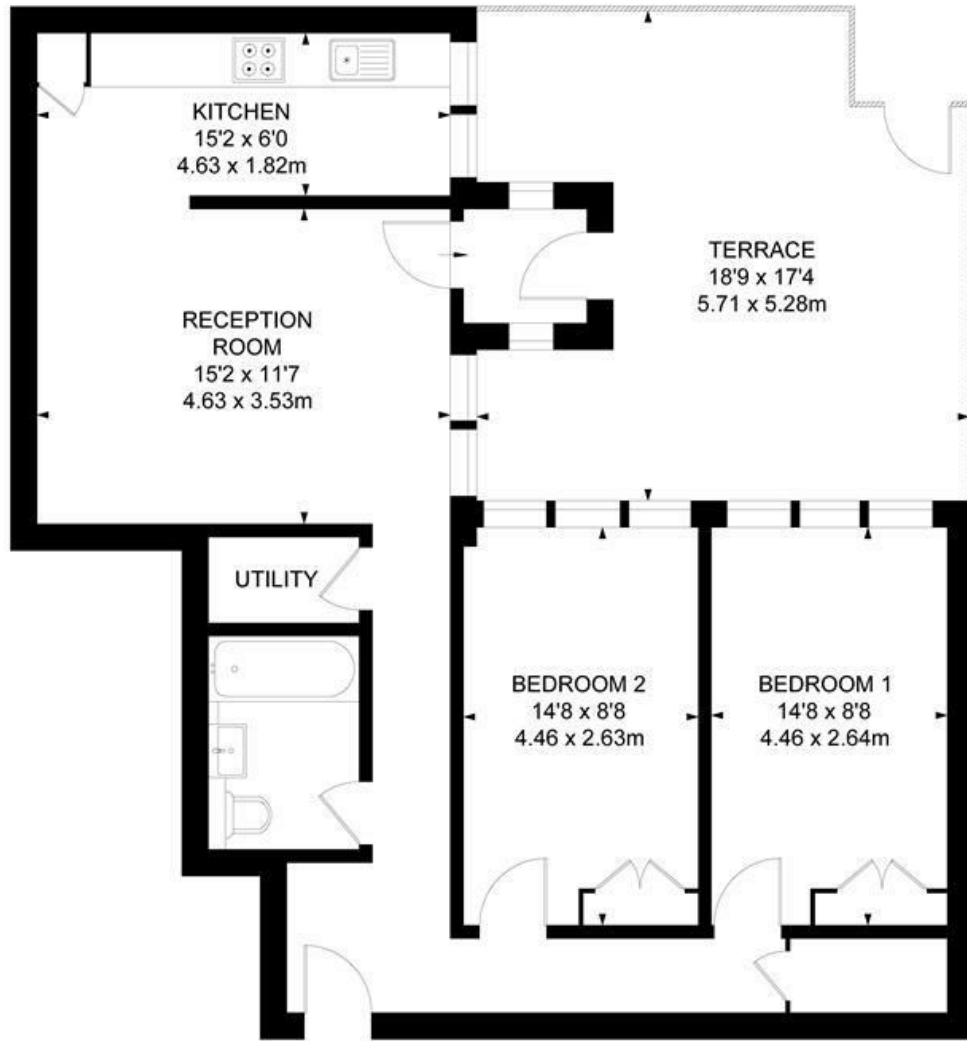
Stockwell Park Road, SW9

Burrow House, SW9

2 Bedroom Flat

APPROXIMATE GROSS INTERNAL AREA :

764 SQ FT / 70.96 SQ M



GROUND FLOOR



While we try our very best, floor plans are produced as a guide only and we take no responsibility for the precise accuracy with which any property is represented.



Stockwell Park Road, SW9

