



**Coldharbour Lane, Brixton, SE5**

2 bedroom flat for sale

**£415,000**

Leasehold

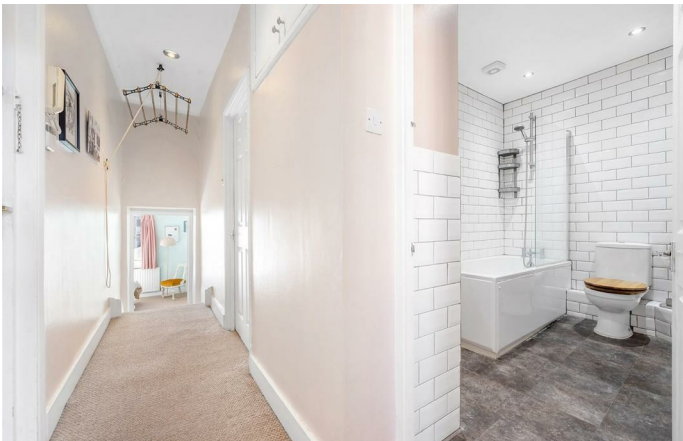
## Property Details

This bright two bedroom apartment is set over the first floor of a semi-detached Victorian conversion, positioned on the ever-vibrant Coldharbour Lane, close to excellent transport links and local amenities. Accessed via a well-kept communal entrance with a convenient bike storage area under the stairs, the property offers a well-balanced layout with a welcoming hallway. To the front, a spacious open-plan reception and kitchen is filled with natural light from large sash windows, providing ample space to relax, dine and entertain. The kitchen features sleek white cabinetry, integrated appliances and a breakfast bar, enhancing the sociable vibe. The bedrooms are both tucked away to the rear of the home and separated from one another for a desirable level of privacy. The principal bedroom is a calm retreat with a skylight, while the second bedroom offers versatile use as a guest room or home office if both bedrooms aren't required. A contemporary bathroom completes the home, finished with a full-sized bath, overhead shower and modern fittings throughout.

## Features

- Two bedrooms
- Semi-detached Victorian conversion
- Bright and airy ambience
- Charming home
- Local amenities on the doorstep
- Train station just a two-minute walk away
- Ruskin Park a four-minute stroll
- Brixton, Camberwell and Herne Hill all within walking distance

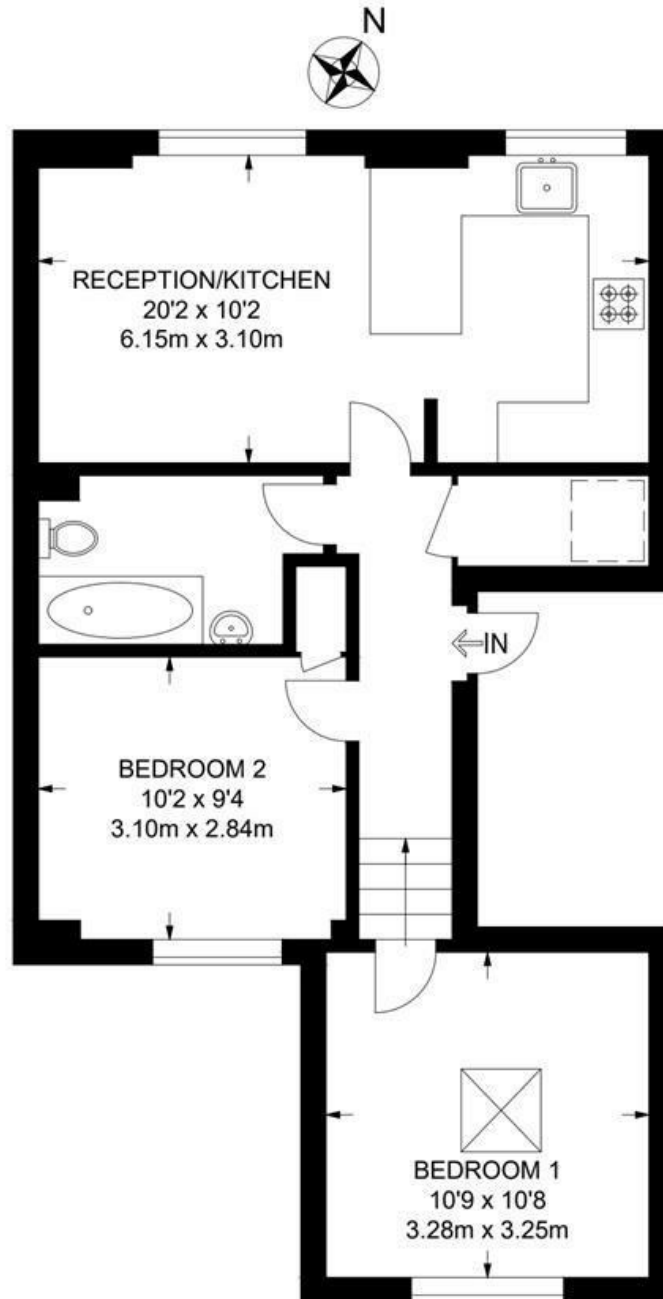
Council tax band C    EPC rating C (72)



Coldharbour Lane, Brixton, SE5

**Coldharbour Lane, SE5**  
**2 Bedroom Flat**

APPROXIMATE GROSS INTERNAL AREA: **559 SQ FT / 52 SQ M**



**FIRST FLOOR**



While we try our very best, floor plans are produced as a guide only and we take no responsibility for the precise accuracy with which any property is represented.

Coldharbour Lane, Brixton, SE5

