



**Hampson Way, Stockwell, SW8**

2 bedroom flat - purpose built to let

**£543 Per Week**

Not specified

## Property Details

Keating Estates are proud to present this stunning two double bedroom with private terrace within a stone's throw of Stockwell tube station. This lovely second floor flat is nestled within a well-maintained block with access to a lift, tucked away quietly off Clapham Road.

The square footage available has been maximised to make use of all space, without wasting an inch on larger, unused hallways. Both bedrooms are very well proportioned spaces and has ample built in storage. The large and airy reception room is separate and also leads out to your very own private terrace, the kitchen is modern and fully integrated, provides plenty of storage options and surface space. An attractive contemporary family bathroom complete this charming flat.

With access to both the Northern Line and Victoria Line a mere six-minute stroll away at Stockwell station, you will have everything on their doorstep from the famous Irish pub The Swan, large brand supermarkets and Stockwell's eclectic array of eateries. Brixton is a seven-minute walk in the other direction offering the culinary delights of Brixton Village, The Ritzy cinema and POP Brixton to mention but a few. Clapham High Street is a ten-minute stroll down Landor Road, with everything Clapham has to offer in restaurants and nightlife. The green open spaces of Slade Gardens plus the award-winning Brockwell Park and Clapham Common are also all within walking distance.

**Council tax band B**      **EPC rating E (47)**

## Features

- Two bed
- Large reception
- Private balcony
- Modern throughout
- Close to transport Link
- Close to high street amenities



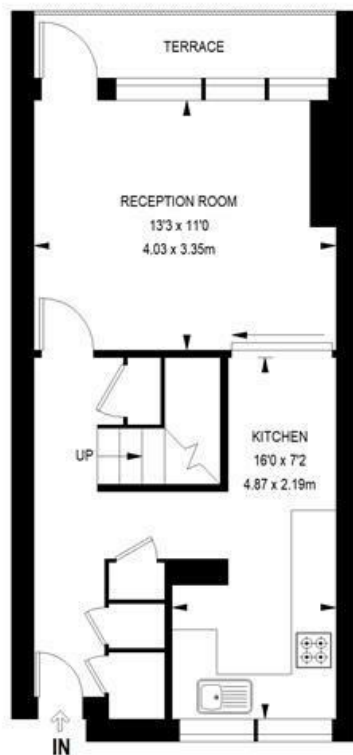
Hampson Way, Stockwell, SW8

**Hampson Way, Stockwell, SW8**

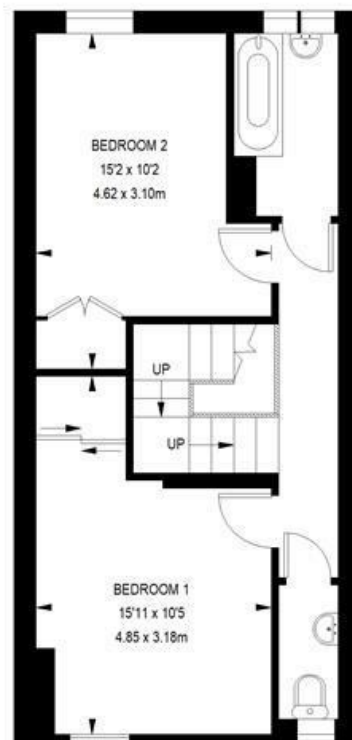
**2 bedroom flat**

APPROXIMATE GROSS INTERNAL AREA:

757 SQ FT / 70.33 SQ M



FIRST FLOOR



SECOND FLOOR



While we try our very best, floor plans are produced as a guide only and we take no responsibility for the precise accuracy with which any property is represented.

Hampson Way, Stockwell, SW8

