

Shakespeare Road, Herne Hill, SE24

3 bedroom house - semi-detached for sale

£825,000

Freehold

Property Details

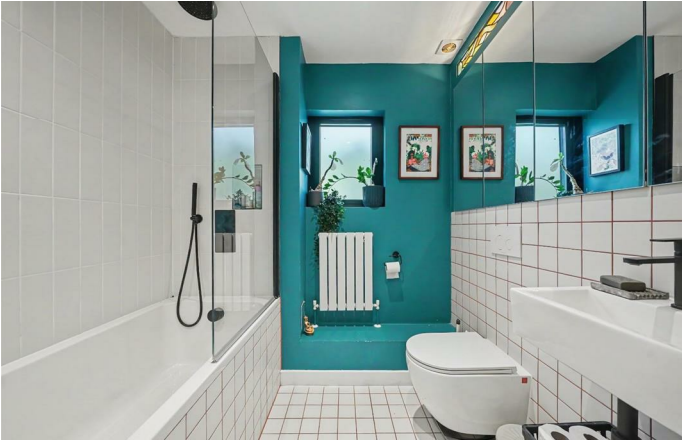
This beautifully refurbished, architecturally designed three bedroom family home has been comprehensively renovated to an exceptional standard, combining contemporary style with practical family living. The ground floor offers a beautifully presented reception room and an impressive open-plan kitchen and dining space featuring sleek navy handleless cabinetry, a central island, integrated appliances and ample room for entertaining. A striking oriel window with integrated seating overlooks the landscaped south-west facing garden, while large sliding doors provide seamless access to this sunny private outdoor space. Upstairs are three well-proportioned bedrooms, including a principal suite with a cleverly designed walk-in wardrobe and stylish en-suite shower room. A contemporary family bathroom serves the remaining bedrooms, finished with matt black fixtures and fittings. Further benefits include a ground floor WC, wide-plank wooden flooring, thoughtfully designed storage solutions throughout and the rare advantage of an allocated off-street parking space directly outside the front door.

Features

- Three bedrooms
- Two bathrooms plus WC
- Dressing room
- SW facing landscaped garden
- Allocated off street parking space
- Small enclave of houses
- Sandwiched between Brixton and Herne Hill
- Brockwell Park at end of the road
- Victoria Line, Thames Link and Overground
- Freehold. Chain-free

Council tax band D EPC rating C (71)



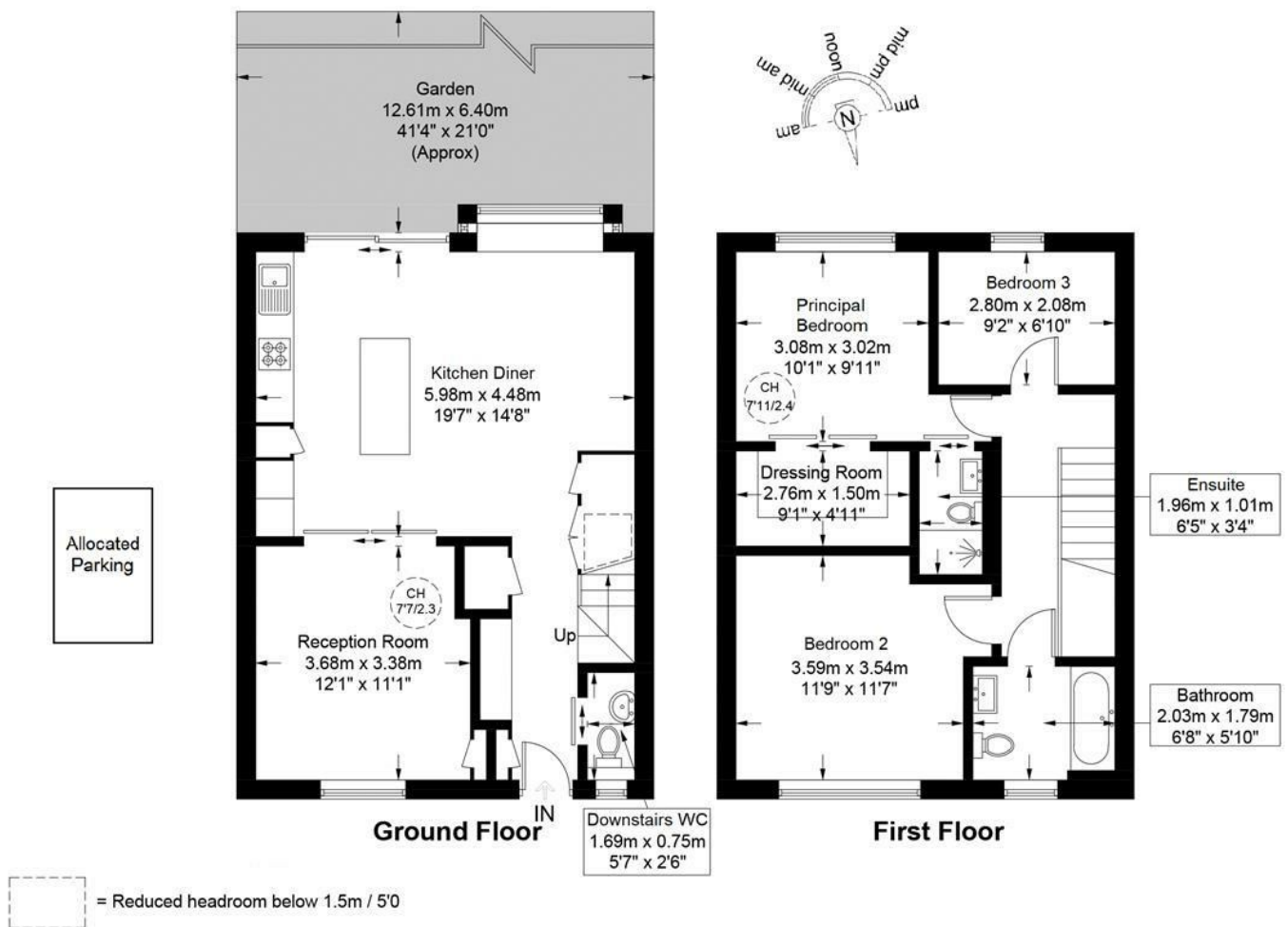


Shakespeare Road, Herne Hill, SE24

Shakespeare Road, SE24
3 Bedroom House

APPROXIMATE GROSS INTERNAL AREA: **1084 SQ FT / 100.7 SQ M** (including restricted height)

APPROXIMATE RESTRICTED HEIGHT: **7 SQ FT / 0.7 SQ M**



While we try our very best, floor plans are produced as a guide only and we take no responsibility for the precise accuracy with which any property is represented.

Shakespeare Road, Herne Hill, SE24

