



Kingswood Road, Brixton, SW2

2 bedroom maisonette for sale

£475,000

Leasehold

Property Details

This attractive ground floor Victorian maisonette offers two generous double bedrooms, a private garden and its own front door. At the heart of the home is a bright and spacious open-plan kitchen and reception room, enhanced by multiple sash windows that flood the space with natural light. The kitchen is arranged in an L-shape with cream cabinetry, ample storage and room to dine, while stylish herringbone flooring adds character throughout. A door from the reception room leads directly to the low-maintenance private garden, complete with decking and space to relax or entertain. The modern bathroom is finished in neutral tones and features a large walk-in shower, vanity unit and a window providing excellent natural light and ventilation. The principal bedroom benefits from a charming feature fireplace and sash windows, while the second double bedroom enjoys a peaceful garden outlook and retains an original built-in cupboard. Additional hallway storage further enhances the practicality of this well-presented home.

Council tax band C EPC rating C (69)

Features

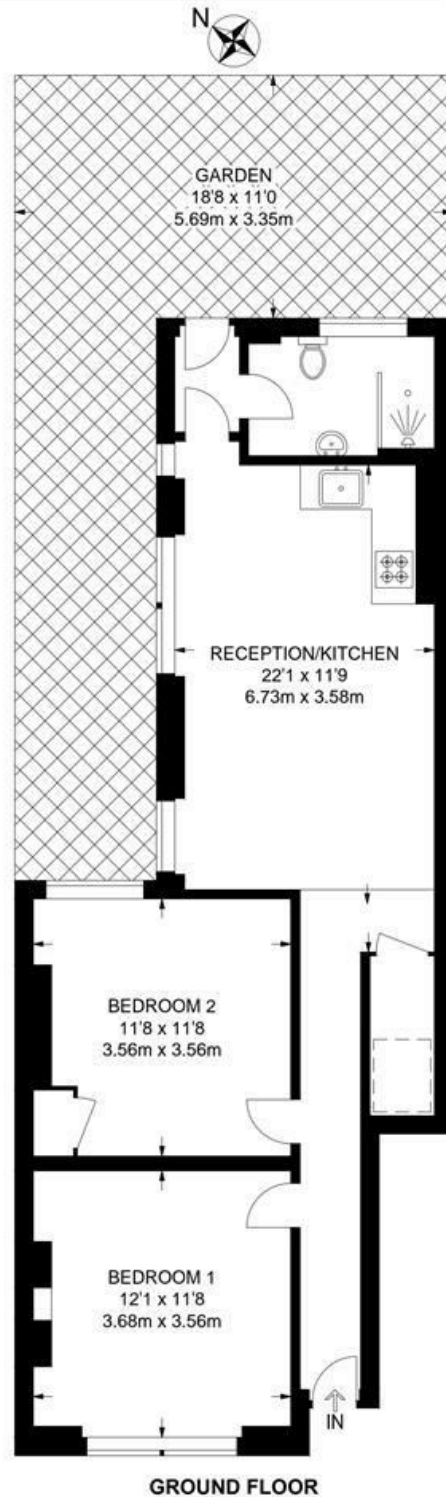
- Two double bedrooms
- Private garden
- Victorian maisonette
- Private entrance
- Newly refurbished bathroom
- Bright and airy throughout
- Quiet, neighbourly street
- Local pub, shops and amenities
- Walking distance to Brixton and Clapham High Streets
- Chain-free



Kingswood Road, Brixton, SW2

Kingswood Road, SW2
2 Bedroom Flat

APPROXIMATE GROSS INTERNAL AREA: **688 SQ FT / 63.9 SQ M**



While we try our very best, floor plans are produced as a guide only and we take no responsibility for the precise accuracy with which any property is represented.

Kingswood Road, Brixton, SW2

